



ALTO DRAWER SYSTEM AFFORDABLE QUALITY

Brought to you by Häfele.

ALTO DRAWER SYSTEM

Alto Drawers: Affordable Quality.

Smooth and effortless. Totally practical, the Alto Drawer System offers an affordable solution coupled with silence, smooth running and ease of use. The synchronised opening action of the Alto Drawer is supremely comfortable - thanks to proven knowledge behind this soft-closing technology, leaving you in no doubt of its quality.

Features

- > 35 kg load capacity.
- > Full extension runners with integrated soft-close.
- > Mounting: Front fix brackets snap into drawer sides with knock-in, screw-fix or expanding dowel mounting onto the drawer front.

Tried and Tested

- > The Alto Drawer System has been independently tested and passed the exacting European DIN EN15338 Level 3 standards.

Tried and tested.

Tested and passed: DIN EN15338

This was achieved with a full 35 kg weight capacity over 60,000 opening and closing cycles - meaning Alto will be there for you through the life of your kitchen!

DRAWER SET 86 MM



86 mm Alto Drawer Set, white

Drawer length (mm)	Screw-on	Knock-in
270	552.66.750	552.66.760
300	552.66.751	552.66.761
350	552.66.752	552.66.762
400	552.66.753	552.66.763
450	552.66.754	552.66.764
500	552.66.755	552.66.765
550	552.66.756	552.66.766

Packing: 1 set



Supplied with:

- > Drawer sides
- > Runners
- > Knock-in or screw-on front fixing brackets
- > Back panel brackets
- > Cover caps

INTERNAL DRAWER FRONT



Standard internal front panel

Description	Packing	Cat. No.
Front panel 1074 mm - cuttable	25 pieces	552.69.780
Front panel connectors 86 mm	25 pairs	552.69.790

ALTO DRAWER SYSTEM

DRAWER SET 140 MM, ROUND RAILS



140 mm Alto Drawer set with round rails, white

Drawer length (mm)	Screw-on	Knock-in
270	552.68.750	552.68.760
300	552.68.751	552.68.761
350	552.68.752	552.68.762
400	552.68.753	552.68.763
450	552.68.754	552.68.764
500	552.68.755	552.68.765
550	552.68.756	552.68.766

Packing: 1 set



Supplied with:

- > Drawer sides
- > Runners
- > Knock-in or screw-on front fixing brackets
- > Back panel brackets
- > Gallery rails
- > Cover caps

DRAWER SET 140 MM, RECTANGULAR RAILS



140 mm Alto Drawer set with rectangular rails, white

Drawer length (mm)	Screw-on	Knock-in
270	552.77.760	552.77.740
300	552.77.761	552.77.741
350	552.77.762	552.77.742
400	552.77.763	552.77.743
450	552.77.764	552.77.744
500	552.77.765	552.77.745
550	552.77.766	552.77.746

Packing: 1 set



Supplied with:

- > Drawer sides
- > Runners
- > Knock-in or screw-on front fixing brackets
- > Back panel brackets
- > Gallery rails
- > Cover caps

INTERNAL DRAWER FRONT



Internal drawer front 140 mm

Description	Packing	Cat. No.
Front panel, 1074 mm - cuttable	25 pieces	552.69.780
Front panel connectors 140 mm	25 pairs	552.71.772

ALTO DRAWER SYSTEM

DRAWER SET 164 MM, ROUND RAILS



164 mm Alto Drawer Set with round rails, white

Drawer length (mm)	Screw-on	Knock-in
270	552.63.750	552.63.760
300	552.63.751	552.63.761
350	552.63.752	552.63.762
400	552.63.753	552.63.763
450	552.63.754	552.63.764
500	552.63.755	552.63.765
550	552.63.756	552.63.766

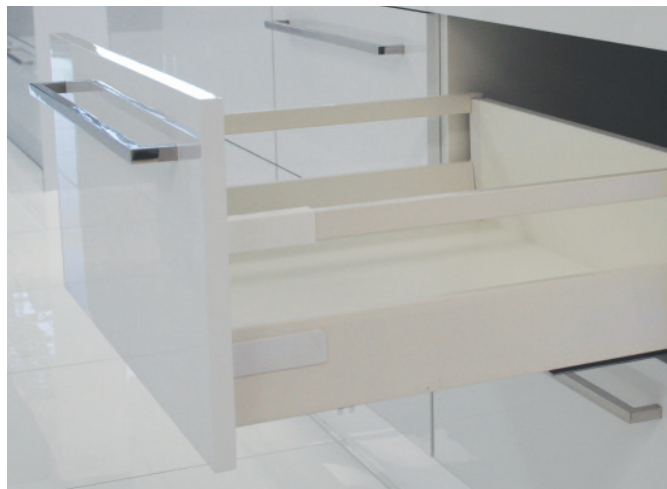
Packing: 1 set



Supplied with:

- > Drawer sides
- > Runners
- > Knock-in or screw-on front fixing brackets
- > Back panel brackets
- > Gallery rails
- > Cover caps

DRAWER SET 164 MM, RECTANGULAR RAILS



164 mm Alto Drawer Set with rectangular rails, white

Drawer length (mm)	Screw-on	Knock-in
270	552.78.760	552.78.740
300	552.78.761	552.78.741
350	552.78.762	552.78.742
400	552.78.763	552.78.743
450	552.78.764	552.78.744
500	552.78.765	552.78.745
550	552.78.766	552.78.746

Packing: 1 set



Supplied with:

- > Drawer sides
- > Runners
- > Knock-in or screw-on front fixing brackets
- > Back panel brackets
- > Gallery rails
- > Cover caps

TALL INTERNAL FRONT PANEL



Internal drawer front 164 mm

Description	Packing	Cat. No.
Front panel, 1074 mm - cuttable	25 pieces	552.69.780
Cross rail, 1074 mm - cuttable	10 pieces	552.69.786
Front panel connectors 164 mm	25 pairs	552.71.773
Handle for internal drawer front	50 pieces	552.69.799

ALTO DRAWER SYSTEM

ALTO BOX METAL HANGING PANEL



Alto Box metal hanging panel, for 164 mm height drawers

Drawer length (mm)	Cat. No.
350	552.69.752
400	552.69.753
450	552.69.754
500	552.69.755
550	552.69.756

Packing: 25 pairs

ALTO BOX ACRYLIC INFILL PANEL



Alto Box acrylic infill panel, for 164 mm height drawers

Drawer length (mm)	Cat. No.
350	552.69.432
400	552.69.433
450	552.69.434
500	552.69.435
550	552.69.436

Packing: 10 pairs

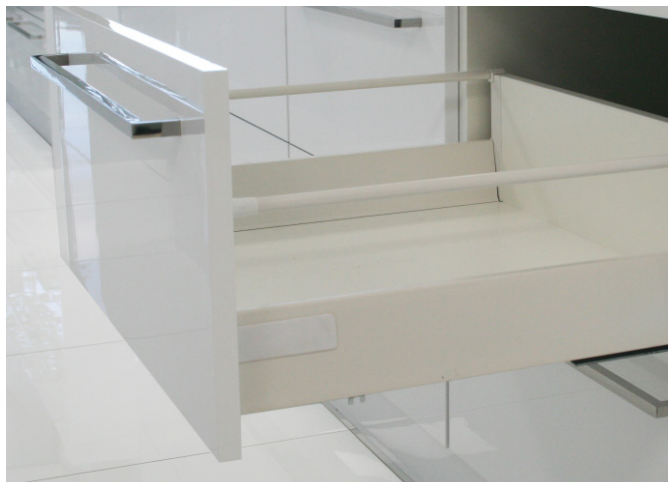


Horizontal dividing panel

Description	Packing	Cat. No.
Horizontal dividing panel 1100 mm	20 pieces	552.72.737
Connector for metal side panels	25 pieces	552.72.780
Vertical divider, aluminium/plastic	20 pieces	552.61.790

ALTO DRAWER SYSTEM

DRAWER SET 204 MM, ROUND RAILS



204 mm Alto Drawer Set with round rails, white

Drawer length (mm)	Screw-on	Knock-in
270	552.64.750	552.64.760
300	552.64.751	552.64.761
350	552.64.752	552.64.762
400	552.64.753	552.64.763
450	552.64.754	552.64.764
500	552.64.755	552.64.765
550	552.64.756	552.64.766

Packing: 1 set



Supplied with:

- > Drawer sides
- > Runners
- > Knock-in or screw-on front fixing brackets
- > Back panel brackets
- > Gallery rails
- > Cover caps

DRAWER SET 204 MM, RECTANGULAR RAILS



204 mm Alto Drawer Set with rectangular rails, white

Drawer length (mm)	Screw-on	Knock-in
270	552.79.760	552.79.740
300	552.79.761	552.79.741
350	552.79.762	552.79.742
400	552.79.763	552.79.743
450	552.79.764	552.79.744
500	552.79.765	552.79.745
550	552.79.766	552.79.746

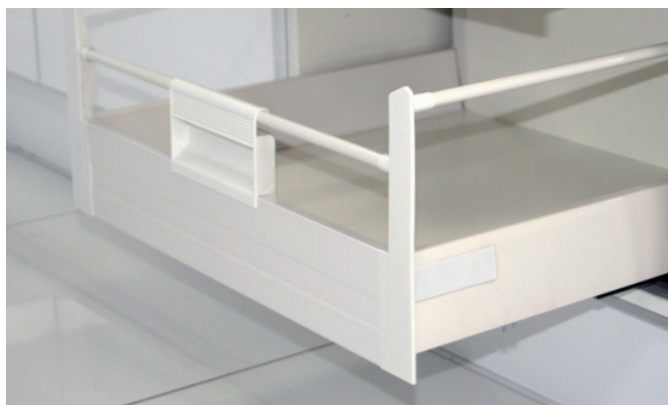
Packing: 1 set



Supplied with:

- > Drawer sides
- > Runners
- > Knock-in or screw-on front fixing brackets
- > Back panel brackets
- > Gallery rails
- > Cover caps

TALL INTERNAL FRONT PANEL

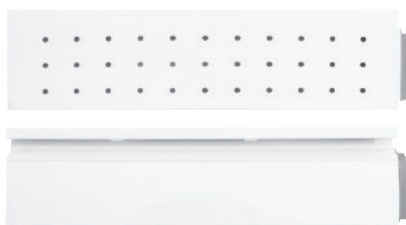


Internal drawer front 204 mm

Description	Packing	Cat. No.
Front panel, 1074 mm - cuttable	25 pieces	552.69.780
Cross rail, 1074 mm - cuttable	10 pieces	552.69.786
Front panel connectors 204 mm	25 pairs	552.69.791
Handle for internal drawer front	50 pieces	552.69.799

ALTO DRAWER SYSTEM

ALTO BOX DOUBLE METAL HANGING PANEL



Alto Box double metal hanging panel, for 204 mm height drawers

Drawer length (mm)	Cat. No.
350	552.69.762
400	552.69.763
450	552.69.764
500	552.69.765
550	552.69.766

Packing: 10 pairs

INTERMEDIATE RAILS



Intermediate rails, for 204 mm drawers, between drawer and top rail

Drawer length (mm)	Cat. No.
350	552.70.762
400	552.70.763
450	552.70.764
500	552.70.765

Packing: 25 sets



Horizontal dividing panel

Description	Packing	Cat. No.
Horizontal dividing panel 1100 mm	20 pieces	552.72.737
Connector for metal side panels	25 pieces	552.72.780
Vertical divider, aluminium/plastic	20 pieces	552.61.790

ALTO DRAWER BULK COMPONENTS

DRAWER SIDES

- > Height: 86 mm
- > Finish: White

Drawer length (mm)	Pallet Quantity	Screw-on Version	Knock-in Version
270	225	552.65.780	552.66.770
300	207	552.65.781	552.66.771
350	162	552.65.782	552.66.772
400	135	552.65.783	552.66.773
450	126	552.65.784	552.66.774
500	117	552.65.785	552.66.775
550	110	552.65.786	552.66.776



Set includes:

- Drawer sides
- Runners
- Knock-in or screw-on front fixing brackets
- Cover caps

STEEL BACKS

For drawer height (mm)	Cabinet width (mm)	Cat. No.
86	400	552.60.703
	450	552.60.704
	500	552.60.705
	600	552.60.707
	800	552.60.708
	900	552.60.709
140	400	552.60.743
	450	552.60.744
	600	552.60.747
	800	552.60.748
	900	552.60.749

Packing: 20 pieces

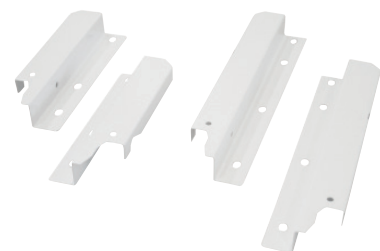


Note:

Back brackets not required when using steel backs. Steel backs designed for use with 16 mm carcasses.

BACK BRACKETS

For drawer height (mm)	Actual height (mm)	Packing	Cat. No.
86	70	50 pairs	552.71.791
120	104	50 pairs	552.69.792
140	124	50 pairs	552.69.793
164	148	50 pairs	552.69.794
204	188	40 pairs	552.69.795



CROSS RAILS AND DIVIDERS


ROUND GALLERY RAILS

- > Version: For use with back brackets or steel backs
- > Finish: White

Drawer length (mm)	Cat. No.
270	552.69.770
300	552.69.771
350	552.69.772
400	552.69.773
450	552.69.774
500	552.69.775
550	552.69.776

Packing: 25 sets



-  **Set includes:**
Knock-in and screw-on front fixings


INTERMEDIATE RAILS

- > Version: For 204 mm back brackets, mid height rail
- > Finish: White

Drawer length (mm)	Cat. No.
350	552.70.762
400	552.70.763
450	552.70.764
500	552.70.765

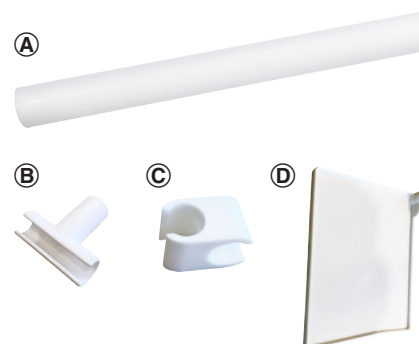
Packing: 25 sets



-  **Set includes:**
Knock-in and screw-on front fixings

ROUND CROSS RAIL

Description	Packing	Cat. No.
Ⓐ Round rail 1074 mm - cuttable	10 pieces	552.69.780
Ⓑ Cross rail connector	1, 1000 pieces	552.69.789
Ⓒ Divider connector	1, 1000 pieces	552.69.888
Ⓓ Vertical divider plastic	20 pieces	552.61.795



CROSS RAILS AND DIVIDERS

RECTANGULAR GALLERY RAILS

> Version:

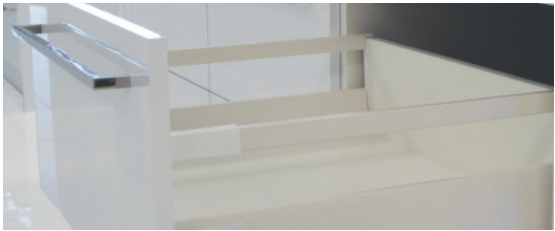
For use with back brackets or steel backs

> Finish:

White

Drawer length (mm)	Cat. No.
270	552.72.720
300	552.72.721
350	552.72.722
400	552.72.723
450	552.72.724
500	552.72.725
550	552.72.726

Packing: 25 sets



Set includes:
Knock-in and screw-on front fixings

RECTANGULAR CROSS RAIL

> Version:

For use with rectangular gallery rails

> Finish:

White

Description	Packing	Cat. No.
Ⓐ Rectangular rail 1100 mm - cuttable	10 pieces	552.72.717
Ⓑ Cross rail connector	1, 1000 pieces	552.72.790
Ⓒ Divider connector	1, 1000 pieces	552.72.791

Ⓐ



Ⓑ



Ⓒ



GLASS TOP FOR ALTO

DRAWER SET 86 MM



Note:
Clips into a 204 mm back bracket
Easy to order, simple as 1, 2, 3, 4

① DRAWER SETS

- > Height: 86 mm
- > Finish: White

Drawer length (mm)	Screw-on Version	Knock-in Version
350	552.65.782	552.66.772
400	552.65.783	552.66.773
450	552.65.784	552.66.774
500	552.65.785	552.66.775
550	552.65.786	552.66.776

Packing: 1 set

② BACK BRACKETS

For drawer height (mm)	Actual height (mm)	Packing	Cat. No.
204	188	40 pairs	552.69.795

③ CLEAR GLASS SIDES

Description	Packing	Cat. No.
Glass sides 350 mm	10 pairs	552.71.612
Glass sides 400 mm	10 pairs	552.71.613
Glass sides 450 mm	10 pairs	552.71.614
Glass sides 500 mm	10 pairs	552.71.615
Glass sides 550 mm	10 pairs	552.71.616

④ GLASS SIDE FITTING SET

Description	Packing	Cat. No.
Glass side fitting set	25 sets	552.71.719

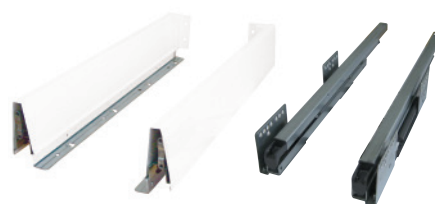
HORIZONTAL DIVIDING PANEL



Horizontal dividing panel

Description	Packing	Cat. No.
Horizontal dividing panel 1100 mm	20 pieces	552.72.737
Connector for glass side panels	25 pieces	552.72.781
Vertical divider, aluminium/plastic	20 pieces	552.61.790

Note:
Image shown as the version for metal sided drawers

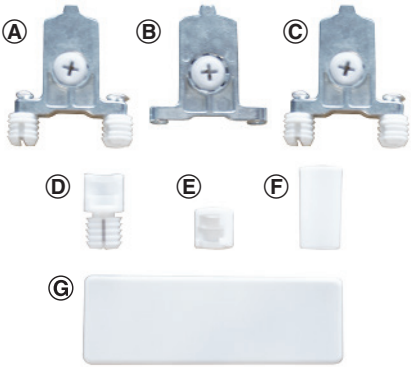


ALTO DRAWER COMPONENTS

ALTO ACCESSORIES

Description	Packing	Cat. No.
Ⓐ Front fixing bracket - knock-in	50	552.69.997
Ⓑ Front fixing bracket - screw-on		558.50.909
Ⓒ Front fixing bracket - expanding dowel	100	552.69.995
Ⓓ Gallery rail connector - knock-in		552.71.781
Ⓔ Gallery rail connector - screw-on		552.71.780
Ⓕ Gallery rail connector - sleeve		552.69.788
Ⓖ Drawer side cover cap - white		552.61.770

Packing: 50 or 100 pieces



DRAWER FRONT MARKER JIG

> Application:	Used to mark the front fix bracket drilling positions on the drawer front.
> Finish:	White

	Cat. No.
	552.69.999

Packing: 1 pair



GALLERY RAIL MARKING JIG

> Application:	Place over installed front fix bracket to determine gallery rail position on drawer front.
> Finish:	White
> Version:	For 140, 164 and 204 mm gallery rails and 204 mm intermediate rail

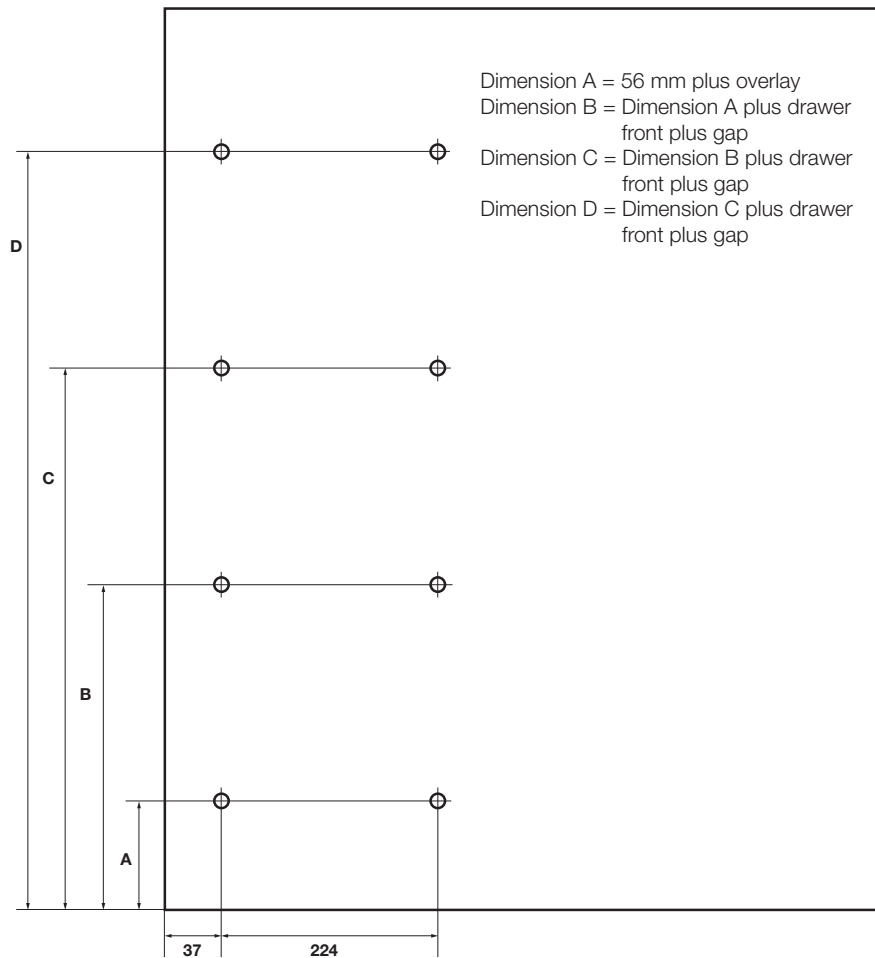
	Cat. No.
	552.69.990

Packing: 1 piece

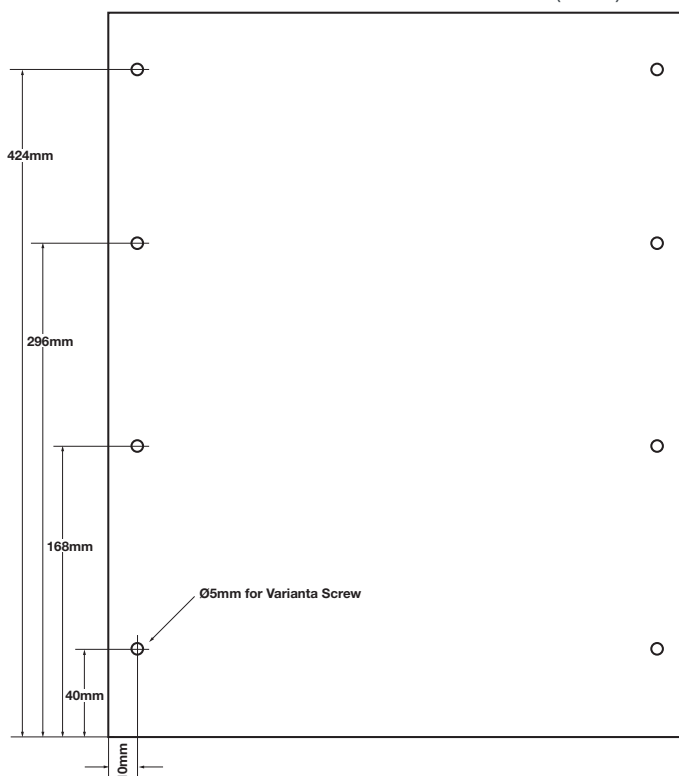


DIMENSIONAL DETAIL

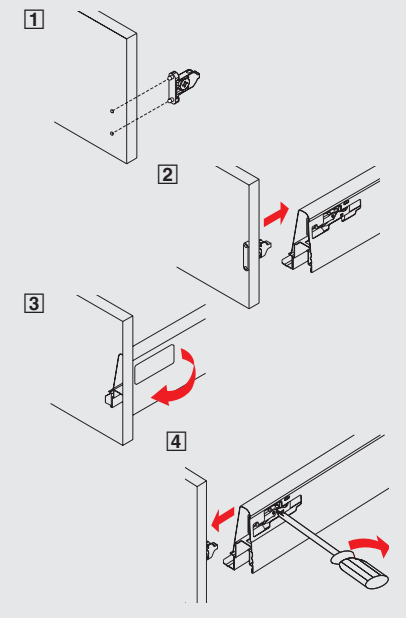
CABINET END PANEL DRILLING DIMENSIONS (MM)



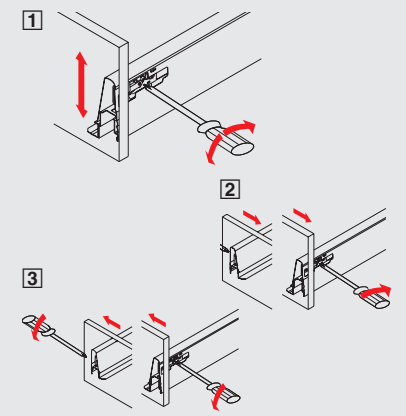
DRAWER BASE DRILLING DIMENSIONS (MM)



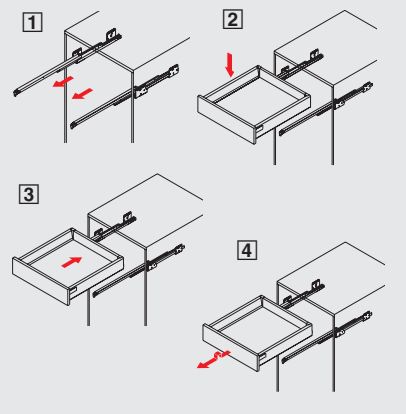
Drawer Front Installation and Removal



Adjustment

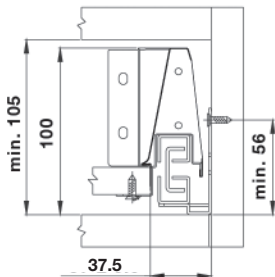


Drawer Insertion and Removal

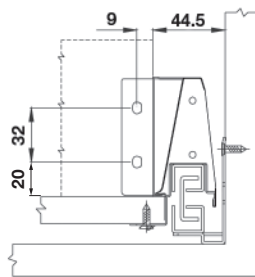


MOUNTING INSTRUCTIONS

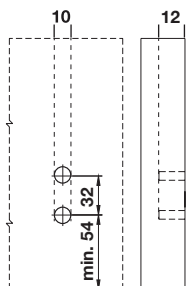
Standard drawer 86 mm



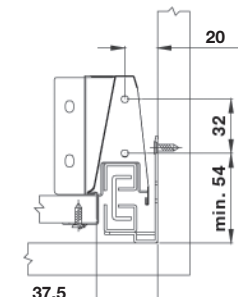
Drilling dimensions for cabinet



Drilling dimensions for back

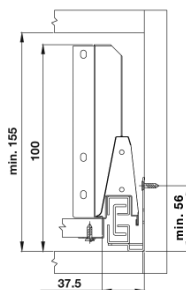


Drilling dimensions for drawer front

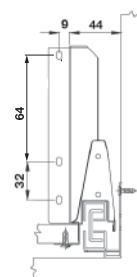


Drilling dimensions for drawer front

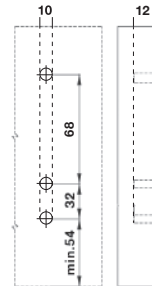
Pot and pan drawer 140 mm



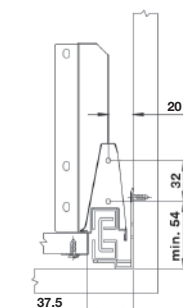
Drilling dimensions for cabinet



Drilling dimensions for back

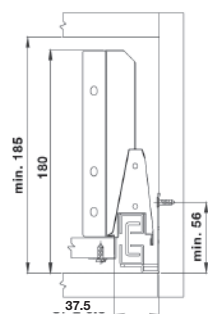


Drilling dimensions for drawer front

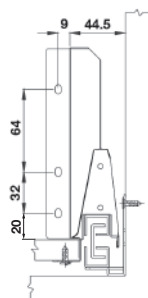


Drilling dimensions for drawer front

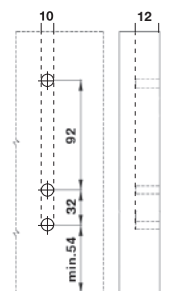
Standard drawer 164 mm



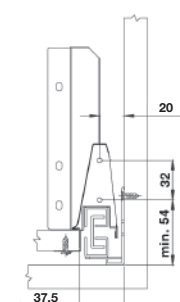
Drilling dimensions for cabinet



Drilling dimensions for back

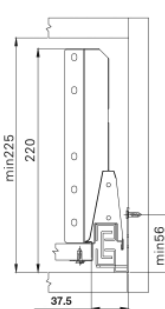


Drilling dimensions for drawer front

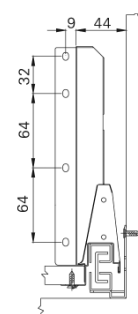


Drilling dimensions for drawer front

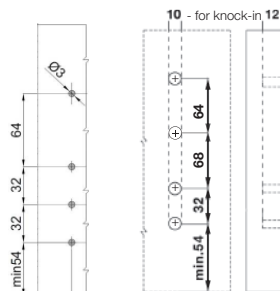
Pot and pan drawer 204 mm



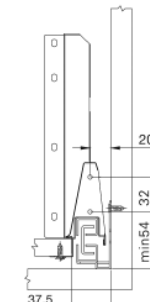
Drilling dimensions for cabinet



Drilling dimensions for back



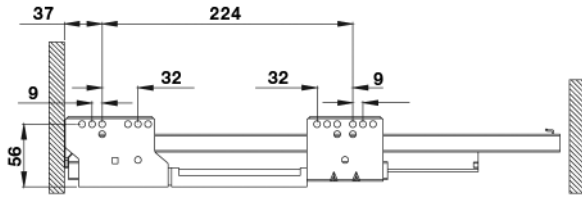
Glass Timber
Drilling dimensions for drawer front



Drilling dimensions for drawer front

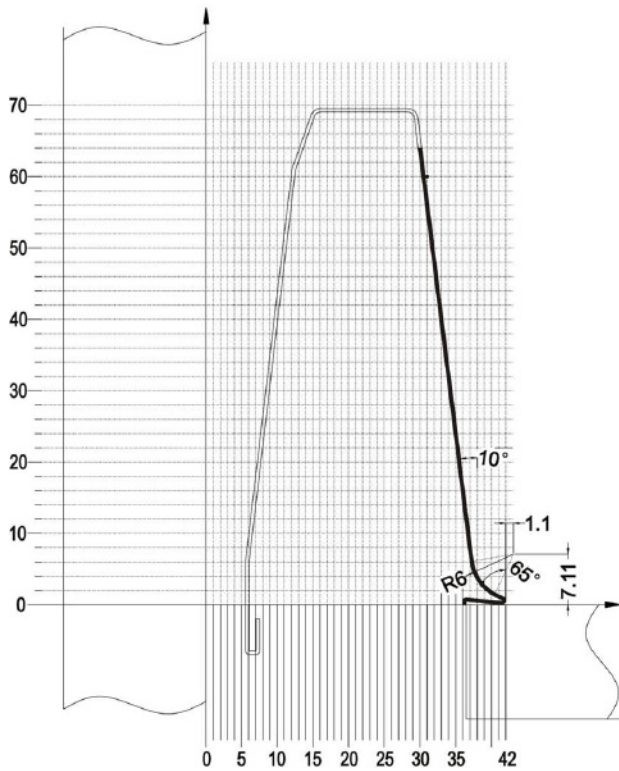
MOUNTING INSTRUCTIONS

Runner drilling dimensions mm

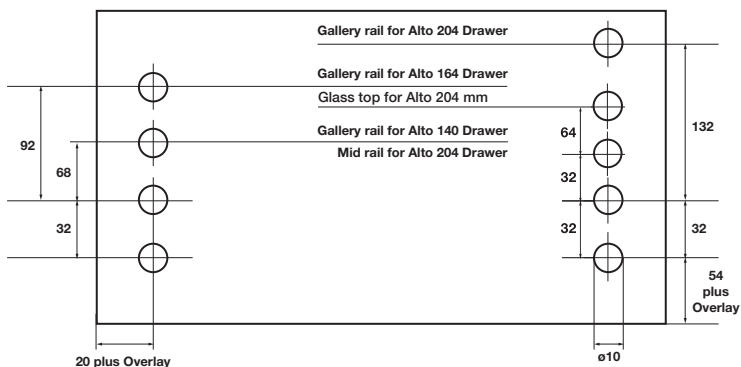


*Dimension is 42 mm for internal drawer application

Drawer profile view

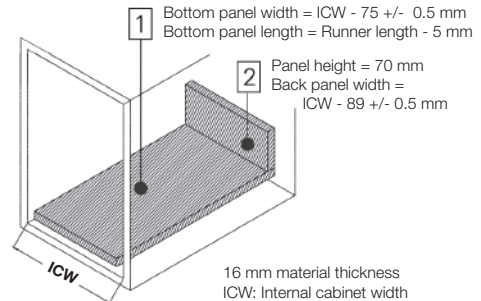


Drawer front drilling dimensions mm

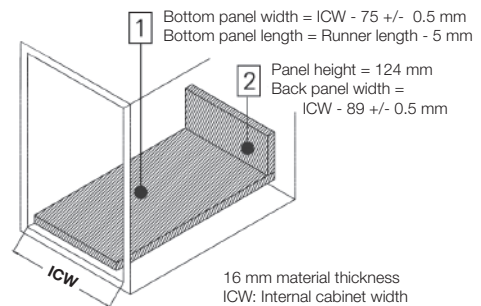


CUTTING DIMENSIONS MM

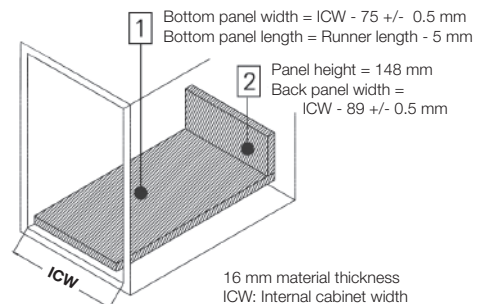
Alto 86mm drawer



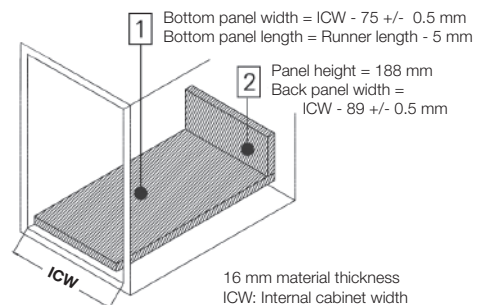
Alto 140mm drawer



Alto 164mm drawer



Alto 204mm drawer



WASTE BINS

ONE2FIVE WASTE BIN SET



FEATURES

- > For hanging waste bin pails into Alto drawers with a nominal length of 500 mm and for 16 mm cabinet construction.
- > Pre-fitted frame elements.
- > Rigid frame construction.
- > Tight integration of the hanging frame in the drawer.
- > Waste bags securely fixed by the carrying handles.
- > Made from 100% recyclable food grade polypropylene.

Cabinet width (mm)	Bins included (L)	Light grey	Dark grey
400	1 x 8, 1 x 17	502.91.602	502.91.620
450	2 x 8, 1 x 17	502.91.603	502.91.621
450	2 x 17	502.91.604	502.91.622
500	2 x 8, 1 x 17	502.91.613	502.91.623
500	2 x 17	502.91.614	502.91.624

Packing: 1 set



Set includes:

One2Five waste bin frame modified for Alto
Combination of 8 and 17 litre One2Five pails
Individual bin lids
Alto 500 mm drawer set with screw-on fixings
Alto steel drawer back



Note:

Maximum drawer height of 400 mm. Not all fixings between One2Five frame and drawer can be achieved, however this does not affect performance.

LID WITH BIO FILTER

For pail capacity (L)	Light grey	Dark grey
5.5, 8	502.90.131	502.87.631
12, 17	502.90.132	502.87.632

Packing: 1 set



CLEANING SET

For pail capacity (L)	Light grey	Dark grey
12, 17	502.90.162	502.87.489

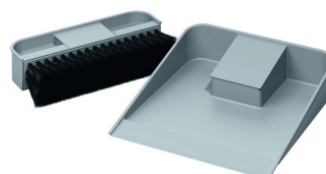
Packing: 1 set



DUSTPAN AND BROOM

For pail capacity (L)	Light grey	Dark grey
12, 17	502.90.153	502.90.154

Packing: 1 set



WASTE BINS

ONE2FOUR WASTE BIN SET



FEATURES

- > For base mounted waste bin pails into Alto drawers with a nominal length of 500 mm and for 16 mm cabinet construction.
- > Rigid frame construction.
- > Easy installation.
- > Waste bags securely fixed by the carrying handles.
- > Made from 100% recyclable food grade polypropylene.

Cabinet width (mm)	Bins included (L)	Light grey	Dark grey
400	1 x 8, 1 x 17	502.91.607	502.91.608
400	2 x 17	502.91.605	502.91.606
450	2 x 8, 1 x 17	502.91.611	502.91.612
450	2 x 17	502.91.609	502.91.610

Packing: 1 set



Set includes:

One2Four base plate (plate may need to be trimmed)
Combination of 8 and 17 litre One2Four pails
Individual bin lids
Alto 500 mm drawer with screw on front fixing
Alto steel drawer back



Note:

Maximum drawer height of 400 mm



Note:

Image shows One2Five waste bin in dark grey



Note:

Image shows One2Four waste bin in dark grey

DRAWER ORGANISATION

BANIO ORGANISATION SYSTEM



FEATURES

- > To cover waste cut-outs in drawers while offering flexibility of design with additional assortment trays.
- > Length and width adjustable by cutting the centre and side components.
- > Made from 100% recyclable food grade polypropylene.

H FRAME SET

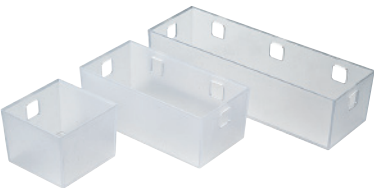
> Version:	Length and width adjustable by cutting the centre and side components For nominal length 500 mm or less
> Finish:	White
> Dimensions (mm):	Depth 481 Max cut out width 435
	Cat. No. 556.23.704
Packing: 1 set	



- Set includes:**
- 2 Side components
 - 1 Centre component
 - 2 Positioning strips
 - 2 Rear panel fittings

TRAYS

> Version:	For installation on positioning strips for Banio
> Finish:	White translucent
> Dimensions (mm):	Small tray 65 x 84 x 85 Medium tray 65 x 168 x 84 Large tray 65 x 251 x 84
Description	Cat. No.
1 x small, 1 x medium, 1 x large	556.23.728
2 x small, 2 x medium, 2 x large	556.23.729
Packing: 1 set	



DRAWER ORGANISATION

CUISIOFLEX DRAWER INSERT SET

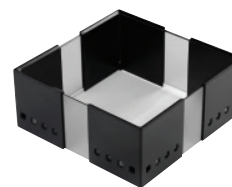


FEATURES

- > For organising plates, dishes, pots, pans and other kitchen items.
- > Subdivision frame with telescopic adjustability.
- > Flexible for use in all popular drawer sizes and styles.
- > Made from 100% recyclable food grade polypropylene.



Translucent white
with white corners



Translucent graphite
with black corners

Version	Cat. No.
White translucent, with white corners	
2 frames	556.81.772
3 frames	556.81.773
Graphite translucent, with black corners	
2 frames	556.81.332

Packing: 1 set

SPRING LOADED VERTICAL DIVIDER

- > Version: For drawers with 500 mm nominal length

Finish	Cat. No.
Alu grey	552.72.775

Packing: 50 pieces

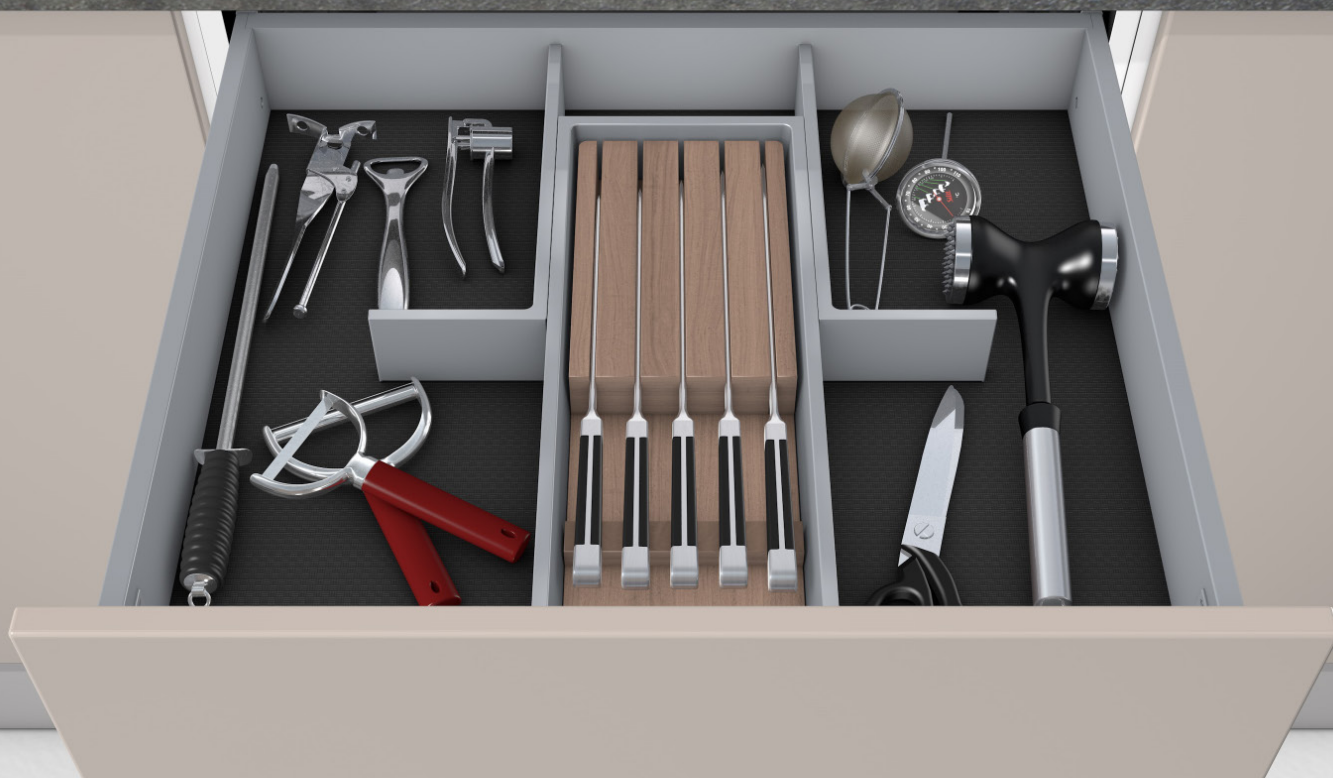


ANTI-SLIP MAT

Finish	500 mm	10 m
White	547.90.790	547.90.715
Black		547.90.110

Packing: 1 set





NINKA CONNECT

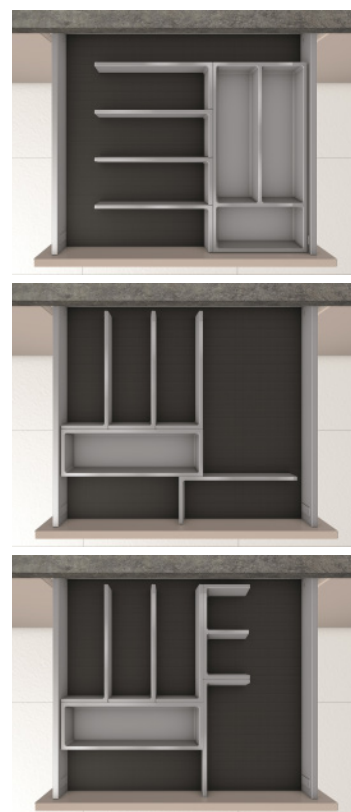
THE FLEXIBLE DRAWER INSERT
PRACTICAL. CLASSY.

Create order by design

- > Connect creates order inside drawers
- > Made in a practical 25 mm grid format, a range of different elements with a harmonious, linear design, connect with each other to create limitless layouts
- > The system works with any drawer-system and can be used in all depths and widths

Features

- > Consists out of trays and partitioning elements
- > Fits cabinets from 300 mm
- > Fits every drawer system
- > Assemble a chosen layout with simple connectors
- > Includes non-slip mat
- > Flexible storage for any items in a drawer



NINKA CONNECT

UNIVERSAL DRAWER INSERT

Connect A

Finish

Dark grey
Light grey

Cat. No.

556.37.517
556.37.617



TRAY 40/20



TRAY 30/10



TWIN DIVIDER 20/10



ANGLE DIVIDER LEFT AND RIGHT 20/10



CONNECTOR



NON-SLIP MAT

Note:
Non-slip mat dimensions (mm): 480 x 526


Supplied with:

- > 1 x Connect 40/20 tray
- > 2 x Connect 20/10 twin dividers
- > 1 x Connect 20/10 angle divider (left)
- > 4 x Connectors
- > 1 x Non-slip mat

Connect B

Finish

Dark grey
Light grey

Cat. No.

556.37.527
556.37.627


Supplied with:

- > 1 x Connect 40/20 tray
- > 4 x Connect 20/10 angle divider (left)
- > 5 x Connectors
- > 1 x Non-slip mat

Connect C

Finish

Dark grey
Light grey

Cat. No.

556.37.537
556.37.637


Supplied with:

- > 1 x Connect 40/20 tray
- > 2 x Connect 20/10 angle dividers (1 x left and 1 x right)
- > 3 x Connectors
- > 1 x Non-slip mat

Connect D

Finish

Dark grey
Light grey

Cat. No.

556.37.547
556.37.647


Supplied with:

- > 1 x Connect 30/10 tray
- > 2 x Connect 20/10 angle dividers (1 x left and 1 x right)
- > 3 x Connectors
- > 1 x Non-slip mat

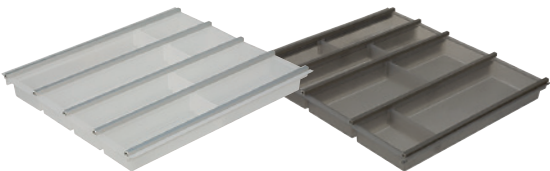
DRAWER ORGANISATION

CUISIO CUTLERY ORGANISATION



FEATURES

- > For Alto drawers with a nominal length of 500 mm.
- > Length: 480 mm.
- > Height: 55 mm.
- > Made from 100% recyclable food grade polypropylene.



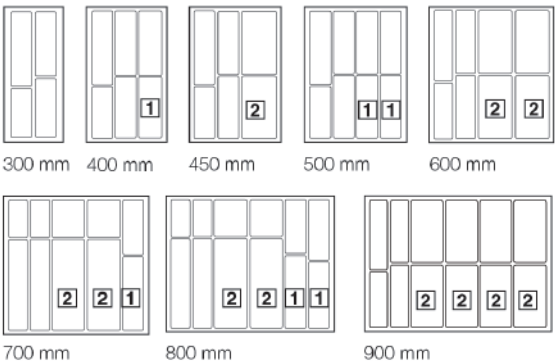
Translucent white

Translucent graphite

Cabinet width (mm)	Actual tray width (mm)	Cat. No.
White translucent		
300	220	556.90.730
400	320	556.90.731
450	370	556.90.732
500	420	556.90.733
600	520	556.90.734
700	620	556.90.739
800	720	556.90.735
900	820	556.90.736
Graphite translucent		
300	220	558.90.330
400	320	558.90.331
500	420	558.90.333
600	520	558.90.334
800	720	558.90.335

Packing: 1 set

Dimensions



KNIFE BLOCK

For compartment	For number of knives	Cat. No.
100 mm width 1	3	556.90.581
150 mm width 2	4	556.90.582

Packing: 1 piece

END PIECE (FOR LEFT OR RIGHT SIDE)

Finish	Cat. No.
White translucent	556.90.691
Graphite translucent	556.90.391

Packing: 1 piece



Note:
Image shows Cuisio used in conjunction with 'End Pieces'

DRAWER ORGANISATION

SORTO CUTLERY ORGANISATION



FEATURES

- > For Alto drawer depth 500 mm.
- > Modular based expandable system.
- > Dishwasher resistant, safe and hygienic for food stuffs.
- > Made from Stainless Steel.

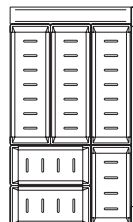


Cabinet width (mm)	Nominal length (mm)	Cat. No.
Ⓐ 450	500	559.97.160
Ⓑ 600	500	559.97.165
Ⓒ 600	500	559.97.170

Packing: 1 set

Configuration

Ⓐ Magic Sorto Set 450+

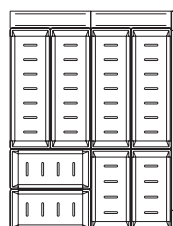


Nominal length 500 and cabinet widths from 450 mm or more.

Consisting of:

- 3 Sorto trays 270 x 90 mm
- 3 Sorto trays 180 x 90 mm
- 1 Spacer 270 mm
- 1 Divider support

Ⓑ Magic Sorto Set 600+

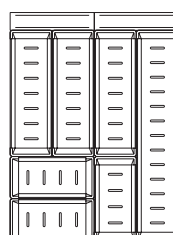


Nominal length 500 and cabinet widths from 600 mm.

Consisting of:

- 4 Sorto trays 270 x 90 mm
- 4 Sorto trays 180 x 90 mm
- 2 Spacers 180 mm
- 1 Divider support

Ⓑ Magic Sorto Set NL 600+



Nominal length 500 and cabinet widths from 600 mm or more.

Consisting of:

- 1 Sorto tray 450 x 90 mm
- 3 Sorto trays 270 x 90 mm
- 3 Sorto trays 180 x 90 mm
- 2 Spacers 180 mm
- 1 Divider support

SORTO DIVIDER

Version	Cat. No.
For drawer depth 500 mm	559.97.912

Packing: 1 piece

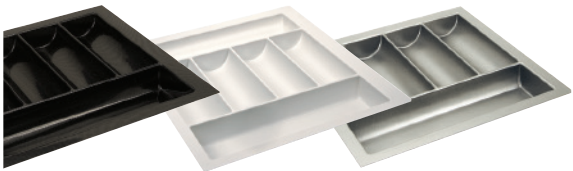
DRAWER ORGANISATION

AGO-VARIO CUTLERY ORGANISATION



FEATURES

- > With wide edge for cutting to exact size.
- > Thickness: 2.5 mm.
- > Dimensions: 440-490 x 50 mm (DxH).
- > Made from vacuum formed plastic.

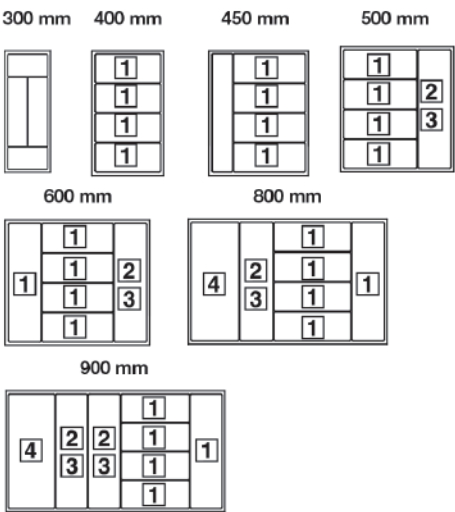


Carbon fibre White textured Stainless steel

Cabinet width (mm)	Actual tray width (mm)	Cat. No.
White textured		
300	200-240	556.53.730
400	300-340	556.53.740
450	350-390	556.53.745
500	400-440	556.53.750
600	500-540	556.53.760
800	700-740	556.53.780
900	800-840	556.53.790
Stainless steel finish		
500	400-440	556.53.050
600	500-540	556.53.060
800	700-740	556.53.080
900	800-840	556.53.090
Carbin fibre finish		
500	400-440	556.53.250
600	500-540	556.53.260
800	700-740	556.53.280
900	800-840	556.53.290

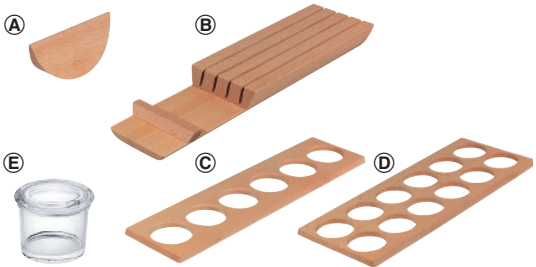
Packing: 1 piece

Dimensions



BEECH ACCESSORIES

Description	Cat. No.
(A) Self-adhesive beech divider	556.53.319
(B) Beech knife block for 4 knives	556.53.310
(C) Beech spice jar insert for 6 jars	556.53.311
(D) Beech spice jar insert for 12 jars	556.53.312
(E) Spice jar with glass lid	543.95.100



DRAWER ORGANISATION

EXZELLENT CUTLERY ORGANISATION



FEATURES

- > With wide edge for cutting to exact size.
- > Thickness: 2.5 mm.
- > Dimensions: 440-490 x 50 mm (DxH).
- > Made from vacuum formed plastic.



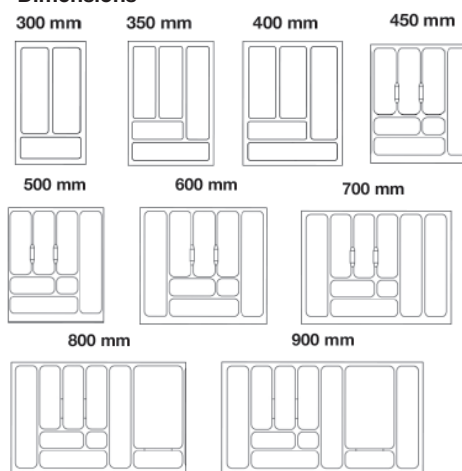
Note:

Timber inserts not included

Cabinet width (mm)	Nominal length (mm)	Cat. No.
300	200-240	556.62.621
350	250-290	556.62.622
400	300-340	556.62.623
450	350-390	556.62.624
500	400-440	556.62.625
550	450-490	556.62.626
600	500-540	556.62.627
700	600-640	556.62.628
800	700-740	556.62.629
900	800-840	556.62.630

Packing: 1 piece

Dimensions

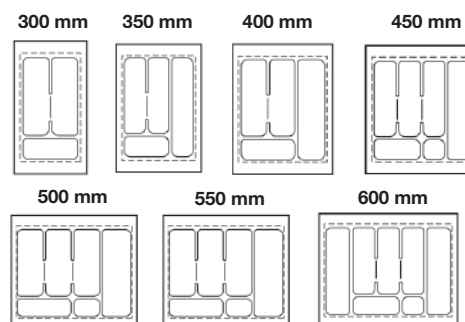


EXZELLENT (350-440 X 57 MM)

Cabinet width (mm)	Nominal length (mm)	Cat. No.
300	200-240	556.62.601
350	250-290	556.62.602
400	300-340	556.62.603
450	350-390	556.62.604
500	400-440	556.62.605
550	450-490	556.62.606
600	500-540	556.62.607

Packing: 1 piece

Dimensions



DRAWER ORGANISATION

EXZELLENT SPICE INSERT

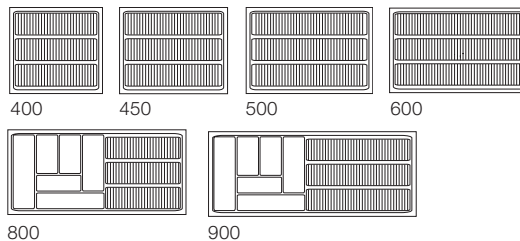
- > Dimensions: 440-490 x 50 mm (DxH)
2.5 mm thick

Cabinet width (mm)	Actual tray width (mm)	Cat. No.
400	300-340	556.63.752
450	350-390	556.63.753
500	400-440	556.63.754
600	500-540	556.63.756
700	600-640	556.63.762
800	700-740	556.63.757
900	800-840	556.63.758

Packing: 1 piece



Dimensions



EXZELLENT UTENSIL INSERT

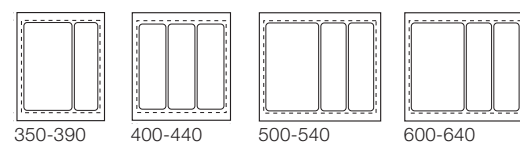
- > Depth: 410-480 mm

Cabinet width (mm)	Actual tray width (mm)	Cat. No.
450	350-390	556.65.748
500	400-440	556.65.757
600	500-540	556.65.766
700	600-640	556.62.888

Packing: 1 piece



Dimensions



UNIVERSAL DRAWER INSERT

Actual depth (mm)	Actual tray width (mm)	Cat. No.
305-390	365-441	556.89.781
405-550	445-525	556.89.782

Packing: 1 piece



BASIC CUTLERY TRAYS

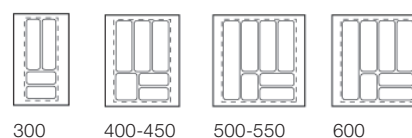
- > Depth: 437-496 mm

Cabinet width (mm)	Actual tray width (mm)	Cat. No.
300	176-299	556.60.752
400-450	301-399	556.60.761
500-550	401-499	556.60.770
600	501-599	556.60.789

Packing: 1 piece



Dimensions





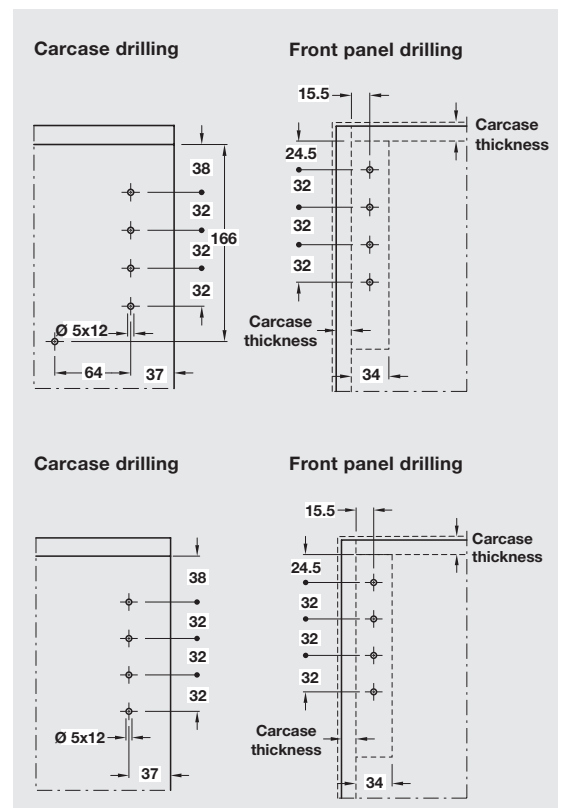
DOOR HARDWARE
HINGES, FLAP AND
SLIDING DOOR FITTINGS.



FREE FLAP

HINGE AND LID STAY IN ONE

- > Opening angles of 90° and 107°
- > Compact dimensions for cabinets with depths starting at 109 mm
- > Version 1.7 for flaps up to 450 mm height
- > Version 3.15 for flaps up to 650 mm height
- > Cover cap for 3.15 is also suitable for 1.7 (harmonious appearance in interior)
- > Suitable in combination with cornices
- > Push-to-open feature for front panels without handles



FLAP FITTINGS

FREE FLAP 1.7



- > Material: Fitting: Steel, Cover caps: Plastic
- > Finish: Fitting: Nickel plated, Cover caps: Grey or white
- > For flap height (mm): 200 - 450
- > Opening angle: 107° or 90° (by means of opening angle restraint)
- > Adjustment facility: Height/side, tilting angle of front ± 1.5 mm, holding power
- > Installation: Fitting for screw fixing with pre-mounted VARIANTA screws, front panel without tools (clip system) onto pre-mounted screw-on brackets

Cabinet height (mm)	Flap weight (kg)		
	Model A	Model B	Model C
200	1.7 - 4.6	3.6 - 7.9	6.8 - 14.7
250	1.3 - 3.8	2.9 - 6.4	5.4 - 11.8
300	1.1 - 3.1	2.4 - 5.1	4.4 - 9.6
350	0.9 - 2.6	2.0 - 4.2	3.7 - 8.1
400	0.8 - 2.1	1.7 - 3.6	3.2 - 7.0
450	0.6 - 1.7	1.4 - 3.2	2.7 - 6.1

FREE FLAP 1.7 Flap stay

	Individual Cat. No.	Bulk Cat. No.
A	372.91.720	-
B	372.91.721	372.91.180
C	372.91.722	372.91.182

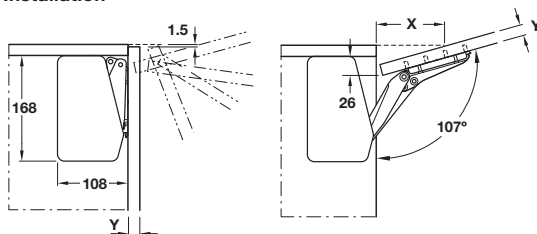
Packing: 1 set or 10 sets



Supplied with:

- > Free Flap 1.7 fitting
- > White cover caps
- > Opening angle restraint

Installation



FREE FLAP 3.15



- > Material: Fitting: Steel, Cover caps: Plastic
- > Finish: Fitting: Nickel plated, Cover caps: White
- > For flap height (mm): 350 - 650
- > Opening angle: 107° or 90° (adjustable on fitting)
- > Adjustment facility: Height/side, tilting angle of front ± 1.5 mm, holding power
- > Installation: Fitting for screw fixing with pre-mounted VARIANTA screws, front panel without tools (clip system) onto pre-mounted screw-on brackets

Cabinet height (mm)	Flap weight (kg)			
	Model D	Model E	Model F	Model G
350	5.2 - 11.0	6.7 - 14.3	10.1 - 21.4	13.5 - 27.3
400	4.7 - 9.6	5.9 - 12.4	8.9 - 18.6	11.8 - 23.3
450	4.1 - 8.4	5.2 - 10.9	7.8 - 16.3	10.4 - 20.5
500	3.7 - 7.5	4.7 - 9.7	7.0 - 14.6	9.2 - 18.3
550	3.3 - 6.8	4.2 - 8.8	6.3 - 13.2	8.3 - 16.5
600	3.0 - 6.2	3.8 - 8.0	5.7 - 12.0	7.6 - 15.0
650	2.6 - 5.6	3.4 - 7.3	5.3 - 11.0	6.9 - 14.0

FREE FLAP 3.15 Flap stay

	Individual Cat. No.	Bulk Cat. No.
D	372.91.730	372.91.190
E	372.91.731	-
F	372.91.732	-
G	372.91.733	-

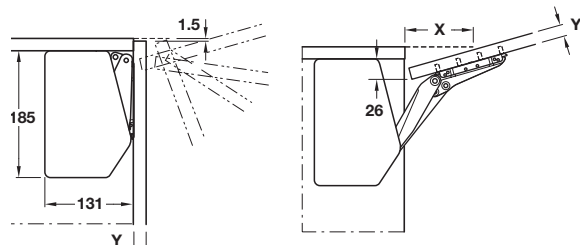
Packing: 1 set or 10 sets



Supplied with:

- > Free Flap 3.15 fitting
- > White cover caps
- > Integrated opening angle restraint

Installation





FREE FLAP H 1.5

THE ALL PURPOSE FITTING FOR WALL UNITS

Attractive diversity of appearance

- > Available as all-plastic version or with metal support arm; housing colour available in white

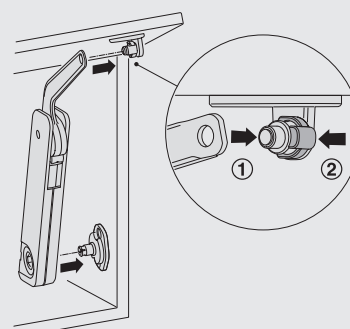
Multi-functionality in the application

- > Variable standard product provides versatile functionality for front panels with and without handles: by changing the installation position and combining with additional components, both conventional applications with a handle and push-to-open applications without a handle can be realised
- > For one-sided or two-sided application (depends on the flap width and weight)
- > Can be used in combination with standard 110° concealed hinges (Push hinges for push-to-open applications; damped hinges for soft closing)

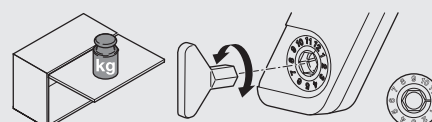
Easy handling

- > Installation is simple, rational and tool-less
- > The holding power can be individually adjusted to suit the respective flap weight and the required function

Quick fixing



Holding power adjustment with SW10 hex key

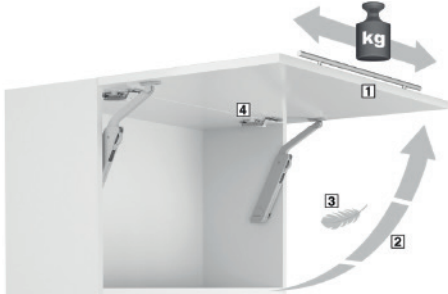


Note

- > Use position 1-8 for adjusting the holding power.

Application options

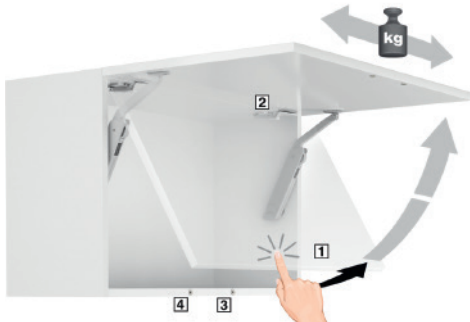
For front panels with handles



- 1 For front panels with handle
- 2 Flap locks reliably in any position
- 3 Reduced amount of manual force required for opening the flap by means of fitting with movement assistance
- 4 For use in combination with standard concealed hinge; soft close provided by hinges with integrated soft closing mechanism

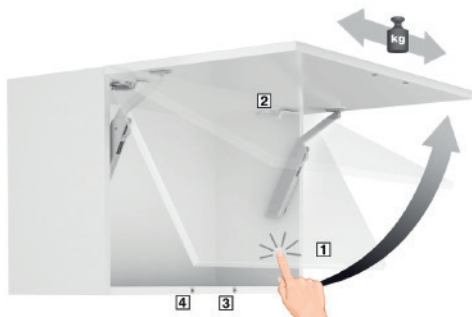
For front panels without handles

Free flap H 1.5 – Touch Opening
Mounting version for opening the flap slightly, with multi-position stop



- 1 A gentle push opens the flap slightly, it can then be fully opened and closed again by hand. The front is locked reliably in any position.
- 2 For use in combination with Salice Push concealed hinges
- 3 Held closed by magnetic door catch and counterplate on the front panel
- 4 Additional magnet for holding in closed position (optional)

Free flap H 1.5 – Push-to-open
Mounting version for automatic complete opening



- 1 Slight pressure on the front opens the flap completely as far as the end position
- 2 For use in combination with Salice Push concealed hinges
- 3 Held closed by magnetic door catch and counterplate on the front panel
- 4 Additional magnet for holding in closed position (optional)

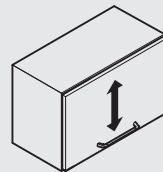
Information

Differentiation of the different versions

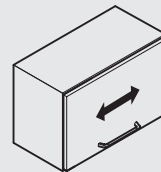
Colour coded adjustment nut for differentiation of model:
 A (grey), B (beige), C (white) and D (black).



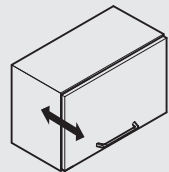
Height adjustment*



Side adjustment*



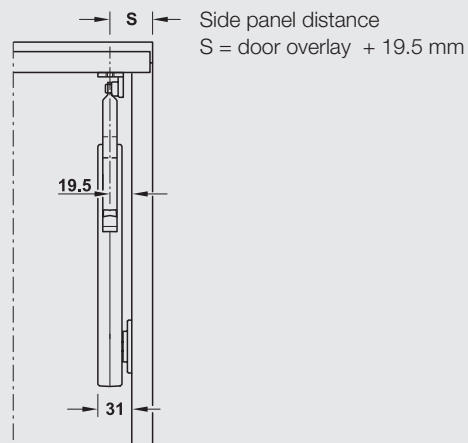
Tilting angle adjustment*



* Depends on the concealed hinges that are used

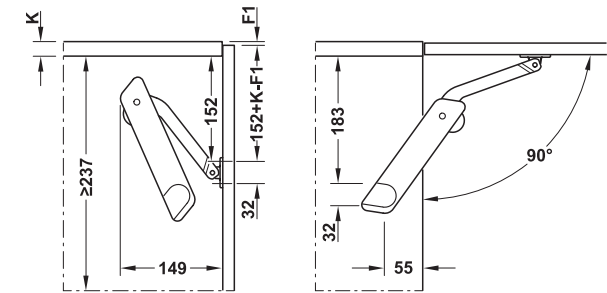
Space requirement at the side and side panel distance

For front panel screw-on bracket, applies to all 3 options



FLAP FITTINGS

FREE FLAP H 1.5 - FOR FLAPS MADE FROM WOOD OR WITH ALUMINIUM FRAME



Application for front panels with handles

Standard mounting for power assisted opening of flap

Opening angle 90°

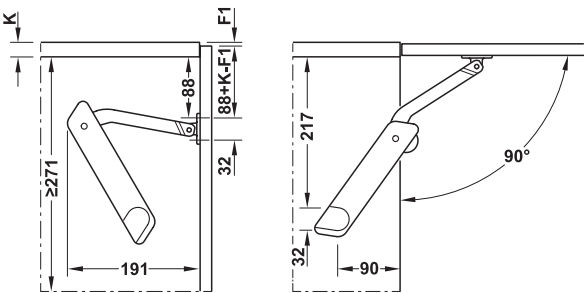
Cabinet height (mm)	Flap weight (kg)		
	Model B	Model C	Model D
275	2.8 - 3.8	3.5 - 6.0	5.8 - 10.5
300	2.2 - 3.4	3.3 - 5.7	5.2 - 9.0
350	2.1 - 2.9	2.7 - 4.9	4.8 - 8.0
400	1.6 - 2.3	2.3 - 4.6	4.3 - 7.9
450	1.3 - 2.2	2.0 - 3.8	3.8 - 6.3
500	1.2 - 2.0	1.7 - 3.4	3.4 - 6.0
550	1.2 - 1.9	1.7 - 3.0	3.0 - 5.1
600	0.9 - 1.6	1.6 - 3.0	3.0 - 4.7

Application for front panels without handles

Touch open mounting for opening the flap slightly

Opening angle 90°

Manual operation with multi-position stop



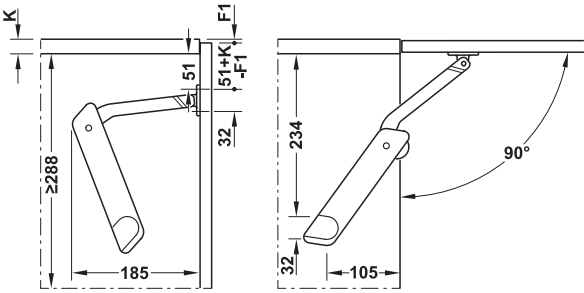
Cabinet height (mm)	Flap weight (kg)		
	Model B	Model C	Model D
350	2.4 - 4.2	3.4 - 5.2*	4.7 - 6.9*
400	1.5 - 3.2	3.1 - 4.9*	3.9 - 5.6*
450	1.5 - 2.6	2.6 - 4.2*	3.6 - 5.4*
500	1.4 - 2.4	2.4 - 3.6	3.4 - 5.0
550	1.3 - 2.1	1.9 - 3.2	2.6 - 4.6
600	1.3 - 1.9	1.8 - 3.1	-

*It is recommended to use a standard Salice push catch and a supplementary Salice push catch for these applications.

Application for front panels without handles

Push to open mounting for automatic opening

Opening angle 90°



Cabinet height (mm)	Flap weight (kg)		
	Model B	Model C	Model D
350	1.7 - 2.5	2.1 - 3.2	3.0 - 4.0
400	1.3 - 1.9	1.9 - 3.0	2.8 - 4.0
450	1.1 - 1.5	1.5 - 2.6	2.2 - 3.2
500	-	1.4 - 2.4	2.0 - 2.9
550	-	1.3 - 2.2	1.8 - 2.8
600	-	1.3 - 1.7	1.5 - 2.5



Note
> Please utilise a Salice magnetic push catch with all front panels without handles.

FLAP FITTINGS

FREE FLAP H 1.5 - FOR FLAPS MADE FROM WOOD OR WITH ALUMINIUM FRAME

Complete sets



All plastic version



Plastic with metal support arm

FREE FLAP H 1.5 For one piece flaps from wood or with aluminium frame

Model	Mounting	Plastic support arm	Metal support arm
A	Right	372.39.800	372.28.800
	Left	372.39.801	372.28.801
B	Right	372.39.810	372.28.810
	Left	372.39.811	372.28.811
C	Right	372.39.820	372.28.820
	Left	372.39.821	372.28.821
D	Right	372.39.830	372.28.830
	Left	372.39.831	372.28.831

Packing: 1 set



Note

> Use 2 Free Flap H 1.5 fittings from cabinet width of 600 mm and above.



Supplied with:

- > 1 Lid stay with cover cap
- > 1 Screw-on bracket for cabinet
- > 1 Screw-on bracket for flap
- > 1 Hex key, SW10, plastic
- > 1 Set of installation instructions



MAXI

FOR MID SIZED ONE PIECE FLAPS

Maxi

- > Compact, strong flap fitting with multiple application possibilities
- > Effortless flap opening of even heavy front panels weighing up to 20 kg
- > 3 different colours: Nickel, White and Black
- > Minimal space required inside the cabinet (max. 184 mm deep x 26 mm wide)
- > Push-to-open: Opens all the way with just a gentle push on the front*
- > Touch opening: A gentle push on the front panel opens it slightly, after which it is opened and closed by hand with multi-position stop*
- > Power assisted opening: Less manual force required to open wide and heavy front panels with handle
- > Extremely wide and heavy front panels with handle: With multi-position stop and optional soft closing**



MAXI FLAP FITTING For flaps from wood or with aluminium frame

Model	Nickel-plated Cat. No.	White Cat. No.
A	373.69.512	373.69.742
B	373.69.412	373.69.744
C	373.69.712	373.69.746
D	373.69.312	373.69.748

Packing: 1 piece

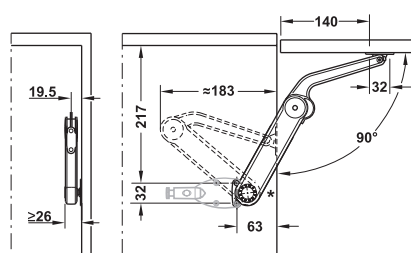


Note

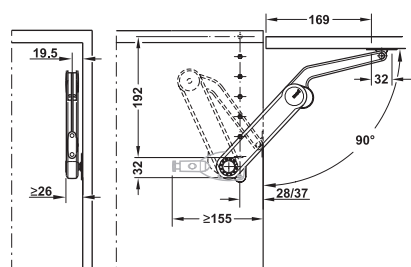
- > Two fittings are required for door widths over 600 mm.

FLAP FITTINGS

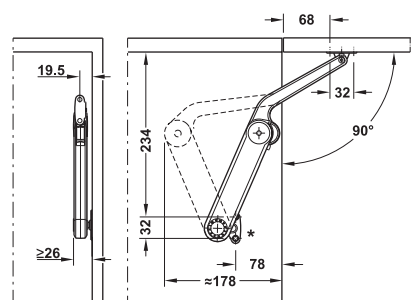
MAXI - FOR ONE PIECE FLAPS



Opening angle 90°



Opening angle 90°,
manual operation with multi-position stop



Opening angle 90°

For front panels with handles Standard mounting for power assisted opening

Cabinet height (mm)	Flap weight (kg)			
	Model A	Model B	Model C	Model D
300	2.7 - 5.1	5.0 - 8.5	8.0 - 12.0	9.0 - 15.0
400	2.1 - 3.5	4.5 - 6.7	5.8 - 11.2	7.2 - 13.5
500	1.6 - 2.6	3.5 - 5.5	4.5 - 8.8	6.0 - 11.0
600	1.3 - 2.2	2.7 - 4.3	3.9 - 7.7	4.8 - 8.5
700	1.2 - 2.0	2.5 - 3.7	3.2 - 6.4	4.2 - 7.6
800	-	2.4 - 3.4	3.0 - 5.4	3.5 - 6.7
900	-	-	2.7 - 5.2	3.0 - 6.0
1000	-	-	-	2.7 - 5.5

Mounting for extremely wide and heavy front panels

Cabinet height (mm)	Flap weight (kg)			
	Model A	Model B	Model C	Model D
300	3.0 - 5.3	5.1 - 10.2	9.1 - 15.8	11.9 - 20.8
400	2.3 - 4.0	3.8 - 7.6	6.9 - 11.9	8.9 - 15.6
500	1.8 - 3.2	3.1 - 6.1	5.5 - 9.6	7.2 - 12.5
600	1.5 - 2.7	2.6 - 5.1	4.6 - 7.9	6.0 - 10.4
700	1.3 - 2.2	2.1 - 4.2	3.8 - 6.6	4.9 - 8.7
800	1.1 - 2.0	1.9 - 3.9	3.4 - 5.9	4.4 - 7.8
900	1.0 - 1.8	1.7 - 3.4	3.0 - 5.2	3.9 - 6.9
1000	0.9 - 1.6	1.5 - 3.0	2.7 - 4.7	3.6 - 6.2

For front panels without handles Touch open mounting for slight opening of flap

Cabinet height (mm)	Flap weight (kg)			
	Model A	Model B	Model C	Model D
300	2.0 - 3.5	3.3 - 6.7	6.0 - 10.3	7.8 - 13.6
400	1.5 - 2.6	2.5 - 5.0	5.5 - 7.8	5.8 - 10.2
500	1.2 - 2.1	2.0 - 4.0	3.6 - 6.3	4.7 - 8.2
600	1.0 - 1.8	1.7 - 3.3	3.0 - 5.2	3.9 - 6.8
700	0.9 - 1.4	1.4 - 2.7	2.5 - 4.3	3.2 - 5.7
800	0.7 - 1.3	1.2 - 2.6	2.2 - 3.9	2.9 - 5.1
900	0.7 - 1.2	1.1 - 2.2	2.0 - 3.4	2.6 - 4.5
1000	0.6 - 1.0	1.0 - 2.0	1.8 - 3.1	2.4 - 4.1

Push to open mounting for automatic opening

Cabinet height (mm)	Flap weight (kg)			
	Model A	Model B	Model C	Model D
300	1.7 - 2.4	3.1 - 4.6	3.8 - 7.0	5.8 - 9.8
400	-	2.4 - 3.7	3.1 - 5.5	4.2 - 7.1
500	-	1.6 - 2.9	2.6 - 4.5	3.4 - 5.8
600	-	1.5 - 2.4	2.1 - 3.6	2.9 - 4.8
700	-	1.2 - 2.1	1.5 - 3.2	2.5 - 4.0
800	-	-	1.3 - 2.9	2.2 - 3.3
900	-	-	1.1 - 2.6	1.9 - 3.3
1000	-	-	-	1.6 - 3.0

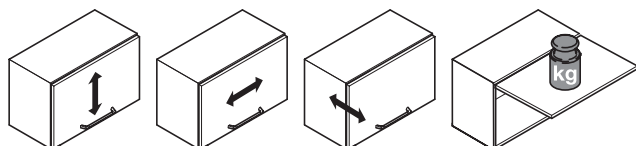
FLAP FITTINGS

DUO/DUO FORTE - FOR SMALL ONE PIECE FLAPS



- > **Features:**
- Adjusting the arms (overshear) turns the lid stay into a flap stay.
 - Less space required inside the cabinet.
 - Water resistant friction coupling with large adjusting range.

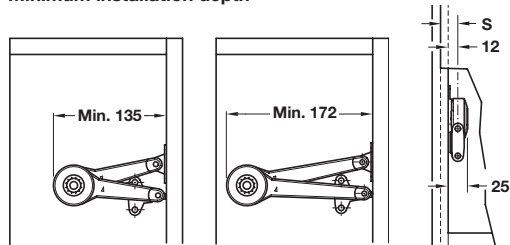
Front adjustment facility



Height adjustment* Side adjustment* Tilting angle adjustment* Holding power adjustment

*Adjustment based on concealed hinges that have been used.

Minimum installation depth



Duo

Duo Forte

Lateral space requirement/
side distance (S) for
screw-on bracket

Information

Holding power adjustment



Holding power adjustment with SW4 Allen key (Cat. No. 008.28.241)

Stronger holding power:

- = Locking function
- = Flap locks in any position (multi-position stop)

Weaker holding power:

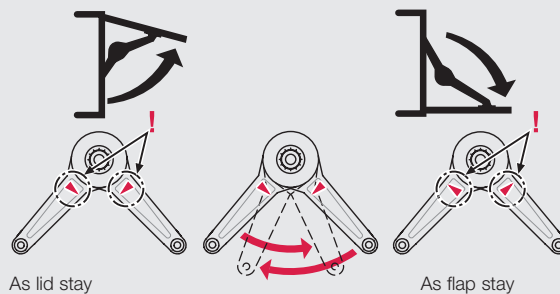
- = Braking function
- = Lid stay closes softly / flap stay opens gently

Finish



Black, Nickel-plated or white

Application

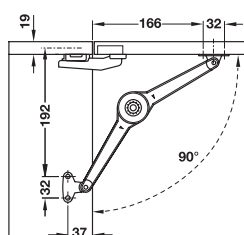


FLAP FITTINGS

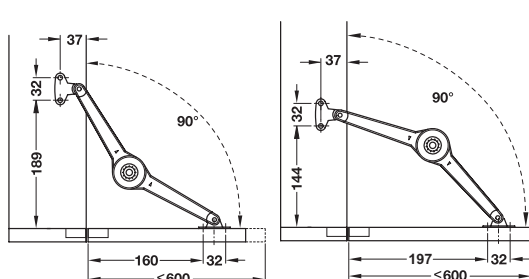
DUO FORTE LID STAY/FLAP STAY



Opening angle 90°



Opening angle 90°

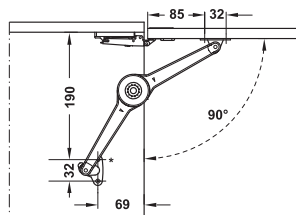


Separate catch required

No separate catch required.
Space requirement for fitting
inside the cabinet when the flap
is being closed: 175 mm from
front edge of cabinet



Opening angle 90°



Note

- > The mounting dimensions and sample measurements tables for this kind of application must be adhered to.
- > Use two Duo fittings for flap widths from 600 mm and above.
- > For use in combination with Salice Push concealed hinges and magnetic door catches.
- > Use one Salice Push magnetic catch and one additional supplementary Salice Push magnetic catch (at some distance) for holding the flap reliably in closed position.

DUO FORTE LID STAY Complete set

Finish	Cat. No.
Nickel-plated	373.66.632
White	373.66.372

Packing: 1 piece



Supplied with:

- > 1 Lid stay with cover cap
- > 1 Mounting bracket for cabinet
- > 1 Screw-on bracket for flap

Standard mounting for front panels with handles - installation as lid stay

Cabinet height (mm)	Flap weight (kg)			
	1 Stay	2 Stays	1 Stay	2 Stays
Installation as lid or flap stay				
200	12.5	15.0	15.0	15.0
250	9.5	15.0	12.0	15.0
300	8.0	15.0	10.0	15.0
350	7.0	13.5	9.0	15.0
400	6.0	12.0	8.0	15.0
450	5.0	11.0	7.0	14.0
500	5.0	9.5	6.0	12.0
550	4.0	8.5	5.5	11.0
600	4.0	8.0	5.0	10.0
Installation as lid stay only				
650	3.5	7.0	5.0	9.5
700	3.0	7.0	4.0	9.0

Sample measurements table for max. flap weight.
Always use two fittings when used as flap stay.

Mounting for front panels without handles - installation as flap stay

Cabinet height (mm)	1 Lid stays		2 Lid stays	
	Max. front panel weight (kg)	Front panel opening (mm)	Max. front panel weight (kg)	Front panel opening (mm)
250	8.0	30	9.0	30
300	6.6	45	9.0	35
350	5.2	60	8.6	50
400	4.8	90	8.0	60
450	4.5	80	6.8	50
500	3.9	100	6.0	55
550	3.6	120	5.6	75
600	3.4	140	5.8	80
650	3.1	150	5.5	85
700	3.0	170	5.1	90

Sample measurements table for max. flap weight.

FLAP FITTINGS

DUO LID STAY/FLAP STAY - COMPLETE SET



DUO LID STAY Complete set

Finish	Cat. No.
Nickel-plated	373.66.612
White	373.66.262

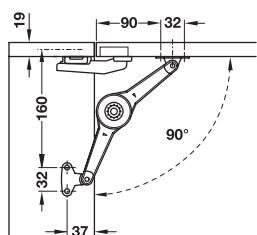
Packing: 1 piece



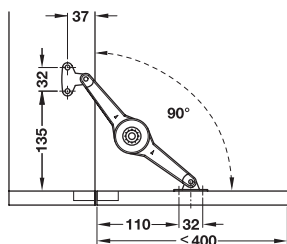
Supplied with:

- > 1 Lid stay with cover cap
- > 1 Mounting bracket for cabinet
- > 1 Screw-on bracket for flap

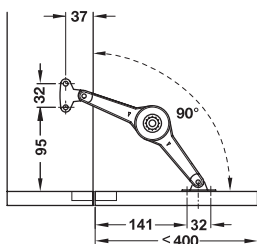
Opening angle 90°



Opening angle 90°



Separate catch required



No separate catch required. Space requirement for fitting inside the cabinet when the flap is being closed: 130 mm from front edge of cabinet

Standard mounting for front panels with handles - installation as lid stay

Cabinet height (mm)	Flap weight (kg)			
	1 Stay	2 Stays	1 Stay	2 Stays
Installation as lid or flap stay				
200	7.5	15.0	9.5	15.0
250	6.0	12.0	7.5	15.0
300	5.0	10.0	6.0	13.0
350	4.0	8.5	5.5	11.0
400	3.5	7.0	5.0	10.0
Installation as lid stay only				
450	3.5	6.5	4.5	8.5
500	3.0	6.0	4.0	7.5

Sample measurements table for max. flap weight. Always use two fittings when used as flap stay.

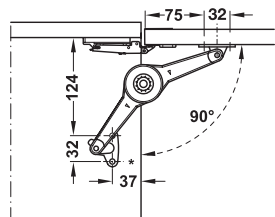
Mounting for front panels without handles - installation as flap stay

Cabinet height (mm)	1 Lid stays		2 Lid stays	
	Max. front panel weight (kg)	Front panel opening (mm)	Max. front panel weight (kg)	Front panel opening (mm)
200	6.6	30	9.6	30
250	6.5	32	9.3	30
300	6.5	40	7.5	40
350	6.4	45	7.1	50
400	5.6	50	6.9	50
450	5.2	70	6.9	65
500	4.5	75	6.7	65

Sample measurements table for max. flap weight.



Opening angle 90°



Note

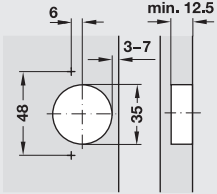
- > The mounting dimensions and sample measurements tables for this kind of application must be adhered to.
- > Use two Duo fittings for flap widths from 600 mm and above.
- > For use in combination with Salice Push concealed hinges and magnetic door catches.
- > Use one Salice Push magnetic catch and one additional supplementary Salice Push magnetic catch (at some distance) for holding the flap reliably in closed position.

METALLA SM AND METALLA E CONCEALED HINGES

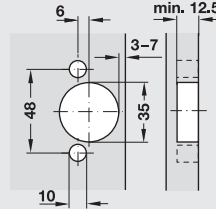
TECHNICAL INFORMATION

Drilling patterns for concealed hinges

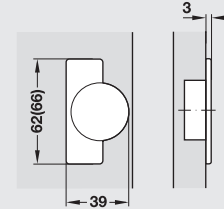
Screw fixing Drilling pattern 48/6



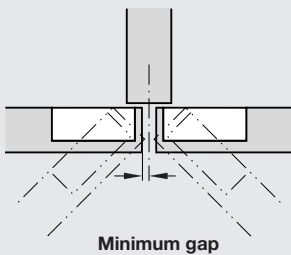
Knock-in / Fast Fix Drilling pattern 48/6



Cup dimensions



Determining the minimum gap that is required



Minimum gap

The required minimum gap is dependent on the type of hinge, distance to cup and door thickness. After the dimensions of distance to cup and door thickness has been determined, the minimum gap can be looked up in the application table.

Example With a door thickness of 19 mm and a distance to cup of 4 mm, a minimum gap of 2 mm is required.

Door thickness (mm)	Distance to cup (mm)			
	3	4	5	6
16	1.2	1.2	1.1	1.1
18	1.7	1.7	1.6	1.6
19	2.0	2.0	1.9	1.9
20	2.4	2.3	2.2	2.2
22	3.3	3.1	3.0	2.9
24	4.5	4.2	4.0	3.9

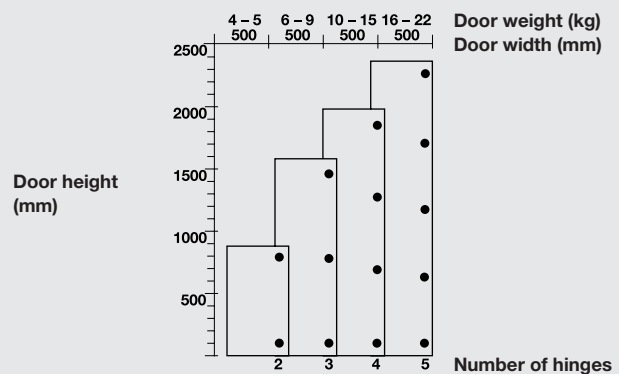
Number of concealed hinges per door

The graph shown gives guidance information only. A trial hanging is recommended.

The number of concealed hinges per door depends on:

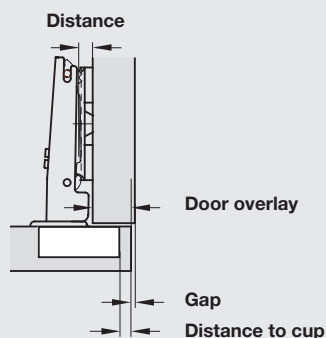
- > Door width and height.
- > Door weight.
- > Door material.

According to the example graph, with a door height of 1500 mm and a door weight of 7 kg, three concealed hinges have to be fitted.



Choice of mounting plate

The different spacing heights of the mounting plates allow adjustments to be made to the door overlay. The dimensions of the distance results from the thickness of the mounting plate. The starting point for determining the required distance is the required mounting method with a defined door overlay.



Example Once door overlay and distance to cup have been determined, mounting plate height can be looked up in the application table. In the example the door overlay is defined at 17 mm and distance to cup is 6 mm. This produces a mounting plate height of 2 mm.

Door overlay (mm)

12	13	14	15	16	17	18	19	20	
				3	4	5	6	7	0
		3	4	5	6	7			2
3	4	5	6	7					4
Distance to cup (mm)					Mounting plate distance (mm)				

METALLA SM SOFT CLOSE HINGES

110° HINGES 48/6 PATTERN

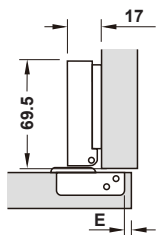


- > Material: Steel cup and hinge arm
- > Finish: Nickel-plated
- > Cup fixing: For screw or rapid fixing
- > Drilling depth (mm): Hinge cup 12.0 mm
- > Adjusting facility: Side adjustment ± 2.5 mm
Height adjustment ± 2 mm (via mounting plate)
Depth adjustment: +3 mm
- > Door thickness (mm): 14-26
- > Drilling pattern: 48/6 with or without 10 mm dowels

Full overlay mounting

Cup fixing	Cat. No.
Drilling pattern	48/6
Screw fixing	315.00.750
Fast fixing	315.00.790

Packing: 200 pieces



Door overlay (mm)

13	14	15	16	17	18	19	20	21	
				3	4	5	6	7	0
		3	4	5	6	7			2
3	4	5	6	7					4

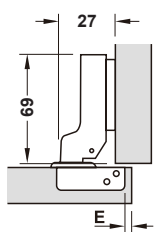
Distance to cup (mm)

Mounting plate distance (mm)

Half overlay mounting / twin mounting

Cup fixing	Cat. No.
Drilling pattern	48/6
Screw fixing	315.00.751
Fast fixing	315.00.791

Packing: 200 pieces



Door overlay (mm)

3	4	5	6	7	8	9	10	11	
				3	4	5	6	7	0
		3	4	5	6	7			2
3	4	5	6	7					4

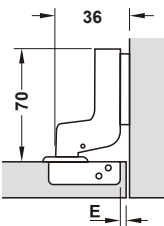
Distance to cup (mm)

Mounting plate distance (mm)

Inset mounting

Cup fixing	Cat. No.
Drilling pattern	48/6
Screw fixing	315.00.752
Fast fixing	315.00.792

Packing: 200 pieces



Door overlay (mm)

-3	-2	-1	0	1	2	3	4	5	
7	6	5	4	3					0
		7	6	5	4	3			2
				7	6	5	4	3	4

Distance to cup (mm)

Mounting plate distance (mm)

METALLA SM SOFT CLOSE HINGES

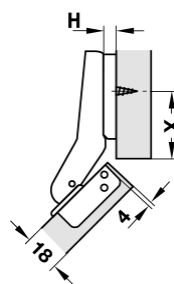
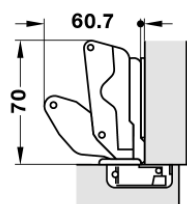
165° HINGES 48/6 PATTERN



45° CORNER ANGLE HINGES 48/6 PATTERN



- > Material: Steel cup and hinge arm
- > Finish: Nickel-plated
- > Cup fixing: For screw or rapid fixing
- > Drilling depth (mm): Hinge cup 12.0 mm
- > Adjusting facility: Side adjustment -5 mm
Height adjustment ± 2 mm (via mounting plate)
Depth adjustment: +3 mm
- > Door thickness (mm): 14-20
- > Drilling pattern: 48/6 with or without 10 mm dowels



Door overlay (mm)									
13	14	15	16	17	18	19	20	21	
				3	4	5	6	7	0
		3	4	5	6	7			2
3	4	5	6	7					4
Distance to cup (mm)					Mounting plate distance (mm)				

X Dimension	Distance to cup	Mounting plate height (mm)		
		0	2	4
37	4	3	1	-1
36	5	4	2	0
35	6	5	3	1
34	7	6	4	2

Full overlay mounting

Cup fixing	Cat. No.
Drilling pattern	48/6
Screw fixing	315.02.750
Fast fixing	315.02.790
Packing: 50 pieces	

Full overlay mounting

Cup fixing	Cat. No.
Drilling pattern	48/6
Screw fixing	315.01.701
Fast fixing	315.01.708
Packing: 100 pieces	

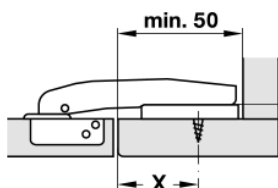
METALLA SM SOFT CLOSE HINGES

BLIND PANEL HINGES 48/6 PATTERN

MOUNTING PLATES



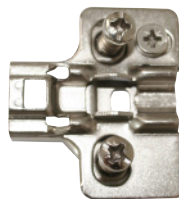
- > Material: Steel cup and hinge arm
- > Finish: Nickel-plated
- > Cup fixing: For screw or rapid fixing
- > Drilling depth (mm): Hinge cup 12.0 mm
- > Adjusting facility: Side adjustment ± 2.5 mm
Height adjustment ± 2 mm (via mounting plate)
Depth adjustment: +3 mm
- > Door thickness (mm): 14-20
- > Drilling pattern: 48/6 with or without 10 mm dowels



X Dimension	Distance to cup	Mounting plate height (mm)		
		0	2	4
20	4	3	1	-1
19	5	4	2	0

Blind corner hinge

Cup fixing	Cat. No.
Drilling pattern	48/6
Screw fixing	315.01.730
Fast fixing	315.01.738
Packing: 100 pieces	



Cam adjustable SM mounting plate

- > Fixing: With Euro screw

Height (mm)	Cat. No.
0	315.98.510
2	315.98.512
4	315.98.514

Packing: 200 pieces



Metalla SM mounting plate

- > Fixing: With Euro screw

Height (mm)	Cat. No.
0	315.98.530
2	315.98.532
2 (without screws)	315.98.522
4	315.98.534

Packing: 200 pieces

SLIDING DOOR FITTINGS FOR FURNITURE

BI-FOLDING DOORS - FOR TIMBER DOORS

ECOLINE 25/50, for door weights 25/50 kg per pair



ECOLINE 25

- > Maximum width (mm) per door: 450
- > Door thickness (mm): 16 - 19
- > Door weight per pair: 25 kgs
- > Features: Bi-fold fittings for hinged timber door. Two options available for panel to panel hinges

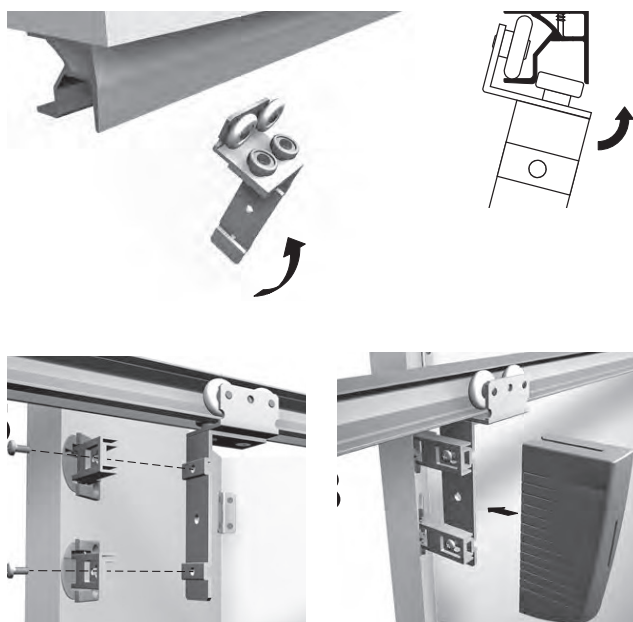
ECOLINE 50

- > Maximum width (mm) per door: 550
- > Door thickness (mm): 16 - 19
- > Door weight per pair: 50 kgs

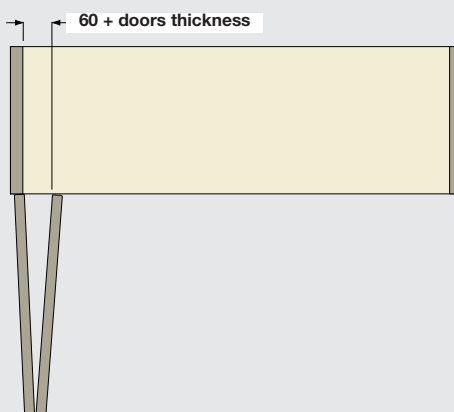
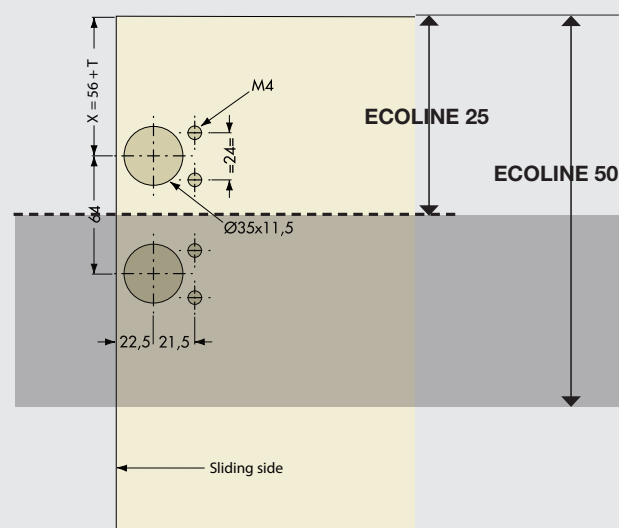
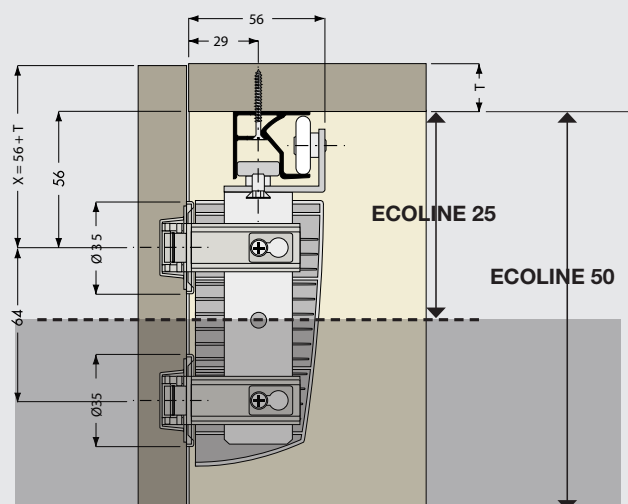


Note

- > Bottom track and guide hinge optional for door heights greater than 2000 mm




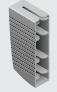
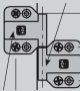
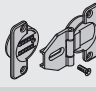
Installation



SLIDING DOOR FITTINGS FOR FURNITURE


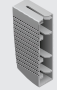
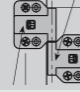
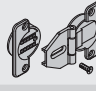
BI-FOLDING DOORS - FOR TIMBER DOORS

ECOLINE 25 - for door weights up to 25 kg

Version		Left Hand Set with lift off hinges	Right Hand Set with lift off hinges	Left Hand Set with concealed hinges	Right Hand Set with concealed hinges
Top running gear with 1 hinge (left/right hand)		1	1	1	1
Plastic cover		1	1	1	1
Lift off hinges		3	3		
Concealed centre hinges				3	3
Cat. No.		409.36.000	409.36.002	409.36.001	409.36.003

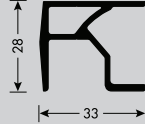
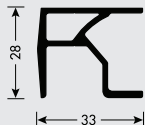
Packing: 1 piece

ECOLINE 50 - for door weights up to 50 kg

Version		Left Hand Set with lift off hinges	Right Hand Set with lift off hinges	Left Hand Set with concealed hinges	Right Hand Set with concealed hinges
Top running gear with 2 hinges (left/right hand)		1	1	1	1
Plastic cover		1	1	1	1
Lift off hinges		4	4		
Concealed centre hinges				4	4
Cat. No.		409.36.004	409.36.006	409.36.005	409.36.007

Packing: 1 piece

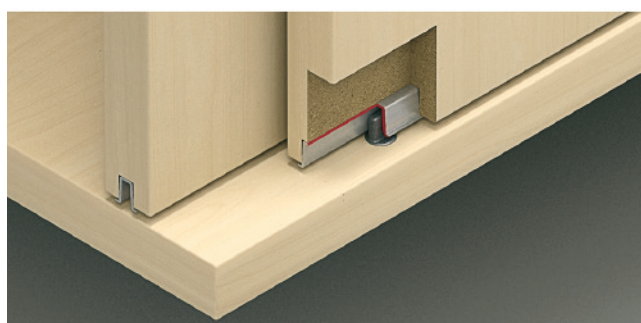
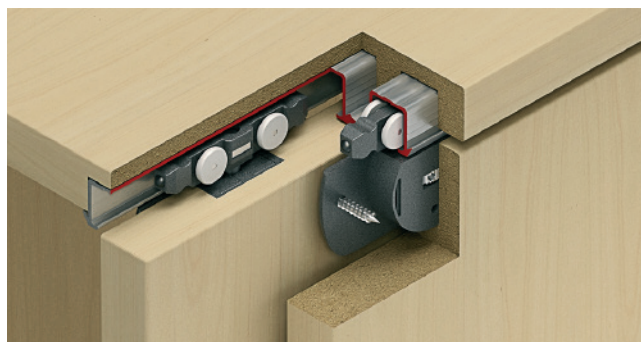
Top running track

Version		Length (mm)	Material	Cat. No.
Top running track profile		1500	Aluminium	409.31.601
Top running track profile		2000	Aluminium	409.31.602

Packing: 1 piece

SLIDO CLASSIC 20/40 C SLIDING DOOR FITTINGS

FOR TIMBER DOORS - WITH SOFT CLOSE MECHANISM (OPTIONAL)



FEATURES

- > For door weights up to 20/40 kg
- > Max. door height (mm): 1400
- > Door width (mm): Max. 1250, min. 360 with soft closing mechanism on one side
- > Door thickness (mm): 16 – 19
- > Height adjustment (mm): ± 2 on running gear using adjusting wheel
- > Material: Housing, running gear and guide: Plastic
- > Running gear: Top running, 4 rollers, friction bearing mounted roller: Plastic, axle: Steel
- > Door stopper: Top stopper, as clip-in stopper or soft and self closing mechanism for sliding into top running track
- > Installation: Housing for screw fixing, running gear without tools (quick fixing system), guide for press fitting into drill hole



Note

Please order running and guide rails separately.

Fitting sets for 20 C

Version	Cat. No.
For 2 doors, with clip-in stopper. With installation instructions	402.30.014
For 2 doors, with soft and self closing mechanism. 20 kg one side, with installation instructions (values in brackets refer to set components) Min. door width = 360 mm	402.30.015

Packing: 1 set

Fitting sets for 40 C

Version	Cat. No.
For 2 doors, with installation instructions	402.30.024
For 2 doors, with soft and self closing mechanism. 40 kg one side, with installation instructions (values in brackets refer to set components) Min. door width = 390 mm	402.30.025

Packing: 1 set

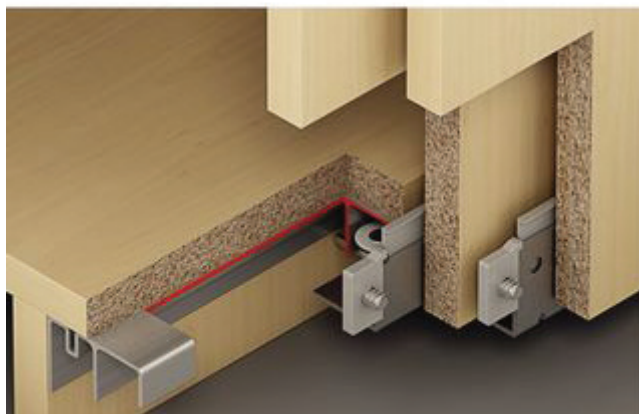
Running rails and accessories

Version	Image	Top panel thickness	Material	Finish	Length (mm)	Cat. No.
Single top running track for press fitting and glue fixing into groove 16 mm or for screw-fixing with countersunk head screws 3.5 mm		Min. 19	Aluminium	Bright	2500	402.33.642
					3500	402.33.643
Double top running track, for press-fitting and glue fixing into groove 16 mm or for screw fixing with countersunk head screws 3.5 mm, for door thickness 19 mm		Min. 19	Aluminium	Bright	2500	402.33.652
					3500	402.33.653

Packing: 1 piece

SLIDO CLASSIC 50 VF P SLIDING DOOR FITTINGS

FOR TIMBER DOORS - WITH GUIDE FOR CLIP FIXING



FEATURES

- > Door thickness: 19 - 21 mm
- > For door weights up to 50 kg
- > Material: Running gear and guides: Steel, double running and guide track: aluminium
- > Running gear: Top running, 1 roller
- > Running gear guided by: Plastic roller with ball bearing
- > Installation: Running gear and guide clip for screw fixing to door, guide for clip fixing, top running track for screw fixing to cabinet, bottom guide track for screw fixing to cabinet from outside, from inside optional



Note

Concave running gears for excellent running characteristics.



Note

Please order the running rail and guide rail separately.

Fitting sets

Version	Thickness (mm)	Cat. No.
For 2 doors	19-21	400.51.190

Packing: 1 set

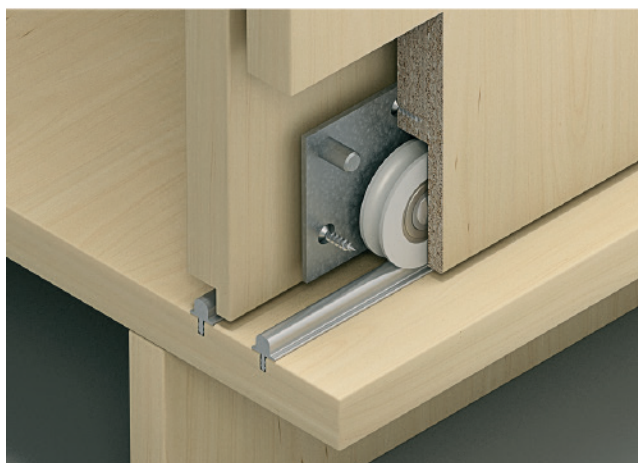
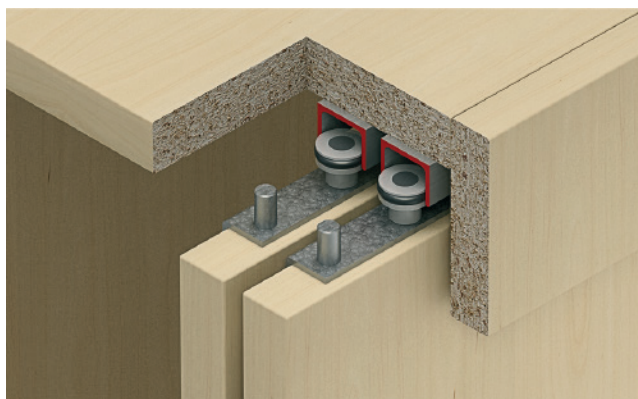
Tracks and individual components

Version	Image	Material	Finish	Length (mm)	Cat. No.
Double top running track, for screw-fixing		Aluminium	Silver anodised	2500	400.52.962
				3500	400.52.963
Double bottom guide track, for screw-fixing		Aluminium	Silver anodised	2500	400.52.954
				3500	400.52.955

Packing: 1 piece

SLIDO CLASSIC 55 SLIDING DOOR FITTINGS

FOR TIMBER DOORS



FEATURES

- > For door weights up to 55 kg
- > Door thickness (mm): ≥ 16
- > Running gear: Bottom running, 1 roller
- > Running gear guided by: Steel ball bearing
- > Height adjustment (mm): ± 2



Note

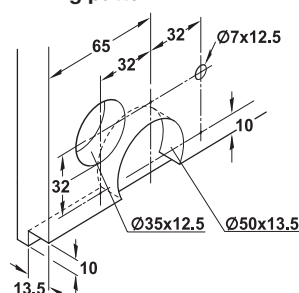
Fitting sets with height adjustment have a drilling pattern for doors with height adjustment and doors without height adjustment. The centre doors always has the drill hole for the height adjustment on the left hand side. Other doors always have the drill hole on the edge next to the panel. Excellent running characteristics due to large roller diameters. Individual door thickness possible.



Note

The fixing material, running rails and guide rails are not included in the set. Please order separately.

Drilling pattern



With height adjustment

Fitting sets

Version	Cat. No.
For 2 doors, with height adjustment and installation instructions	402.23.002
For 3 doors, with height adjustment and installation instructions	402.23.003

Packing: 1 set

Running rails and accessories

Version	Image	Finish	Length (mm)	Cat. No.
Guide rail, top, single-track, not drilled		Bright	2500	402.23.802
			3500	402.23.803
Running rail, bottom, for press fitting, barbed		Bright	2500	402.23.602
			3500	402.23.603
Running rail, bottom, surface mounting		Silver coloured anodised	2500	402.26.622
			3500	402.26.623

Packing: 1 piece



732.04.592- ALTO DRAWER SYSTEMS - 07.2017

Häfele New Zealand Ltd. | Auckland Head Office 16 Accent Drive, East Tamaki, Auckland 2013 | Wellington Design Centre The Wool Store, Level 1 262 Thorndon Quay | Christchurch Design Centre 5 Wigram Close, Sockburn
Phone: 0800 442 335 | **Email:** info@hafele.co.nz | www.hafele.co.nz