

HÄFELE

2019 | [www.hafele.co.nz](http://www.hafele.co.nz)



## SLIDO WALL MOVABLE WALL SYSTEMS

Brought to you by Häfele





# HÄFELE SLIDO WALL FOR NEW ZEALAND.

**Häfele New Zealand brings you the advantage of 'space-efficiency' with our range of Slido Wall high-performance acoustic moveable wall systems. Häfele's Slido Wall systems are backed by 50 years of European experience and leadership in manufacturing proficiency. This experience has been applied specifically to the development of flexible space saving solutions for hotels and leisure facilities, schools and universities, conference centres, retail environments, offices and commercial spaces. Our strength is to deliver customised solutions that are supported by standardised high-quality and function.**

Within this catalogue we present you with two uniquely different Slido Wall solutions (550-Z and 350-T) for acoustic moveable walls that can be realised in different applications, either individually or combined together, to satisfy any design criteria necessary for the requirements of the project. The Slido Wall 550-Z series provides a 'solid' wall that gives you the possibility of multiple finishes; from MDF, melamine and veneers, to fabrics and sound absorbing felts. The Slido Wall 350-T series provides a translucent wall that gives you the possibility of an extensive colour choice for the frame surfaces and the option of automated internal blinds to provide privacy.

All Slido Wall systems are extremely easy to operate as a result of the highly engineered moving parts and, most importantly, the fully retracting compression seals that are fitted to the top and bottom of every wall panel as standard.

Häfele offers optimal support for your project, from its start to its finish. Our team is at your service from the early stages of design through to technical and installation consultation. We are excited to present our new addition of space-saving ideas and solutions to the Häfele New Zealand product range and contact us with your project requirements.

## What sets us apart?

1. **Different Partition Materials:** Through our holistic range of Slido Wall systems, we give you the option of using different materials for your partitions - you could choose solid MDF panels or opt for framed or seamless glass panels when transparency has to be retained.
2. **Sound Insulation:** As a range, our movable wall systems cater to sound insulation levels ranging from 36 dB Rw and can go as high as 58 dB Rw.
3. **Flexible Panel Sizes:** With our range of Slido Wall systems you have the flexibility of wall panels as high as 15 metres or more.
4. **Experience and Expertise:** Over the last decade, Häfele has seen the fruitful completion of a number of projects with our range of Wall Systems around the world. We are still in touch with all our clients to provide every possible after sales service and expertise or handle cases of renovations or redevelopment.
5. **Parking Positions:** With our range of Slido Wall systems, you can achieve every possible customisation for parking locations.



# GOING THE EXTRA DISTANCE: END-TO-END SOLUTIONS BY HÄFELE

While Häfele stands for excellence in quality and functionality, it is also recognised as your partner for end-to-end solutions.

- > Our team of experts will guide you from the very start of a project with proficient advice and consultation in designing and planning.
- > We are available to see the maturity of the project with technical assistance in installation.
- > We believe in giving you every possible convenience right from the time you approach us and through the very duration that you use our product functionalities.

## All you need to know about movable walls.

Movable walls allow business owners and homeowners the flexibility to create the floor plan they need out of a wide-open space. Movable walls are partitions that can increase the functionality of an open area such as a loft apartment, office space, conference room or banquet hall. These systems can provide privacy and good acoustic insulation for work and living environments.

### Uses:

Movable wall panels are an ideal way to separate areas and create privacy in a room.

- > Homeowners can select wall panels that create a solid wall and door for entry into a bedroom or living area or use glass panels to define separate areas of the living space while keeping the open floor concept of the room.
- > In a business environment, movable walls are a quick way to set up offices and change the layout of the building space to accommodate flexibility and efficiency.
- > Hotels and conference centres can use movable walls to create additional functional areas within the available space - for instance, a banquet hall or a convention centre in a hotel can double up with a movable wall partition to accommodate two functions or conferences simultaneously.













# HÄFELE SLIDO WALLS A FLEXIBLE SOLUTION FOR EVERY SPACE.

- > Flexible solutions for every space.
- > Häfele Slido Walls offer a solution for whatever building owners require more flexibility with space.
- > Every square metre can be divided and be used efficiently as possible in order to get more value out of each square metre by re-arranging the floor space.
- > Tailor-made engineering to your design.
- > Häfele offer an extensive range of colours, veneers and fabrics to help develop a space-saving solution that is specific to your project.
- > **Applications:** Hotel and leisure | Schools/ Education facilities | Conference halls | Restaurants | Music studios | Offices



- > Sound insulation and acoustic dB ratings from 36-58 dB Rw
- > The sound insulation of movable walls is defined by international standard Laboratory measurements in accordance with ISO 140-3 depending on whether you choose wicket/ integrated pass doors
- > The Häfele Slido Wall 100 Systems can achieve sound insulation of 36-58 dB Rw, if the requirement is to divide a space without any loss of sound insulation

# PROJECT REFERENCES



Le Meridien, Chiangmai



Intercontinental Hotel, Dusseldorf - wall open



Intercontinental Hotel, Dusseldorf - wall closed



- > Height: 12.5 m
- > Square meter: 705 m<sup>2</sup>
- > Surface material: HPL
- > Acoustic performance: 50dB



**Siam Paragon Bangkok, Thailand**



- > Height: 5.35, 8.5, 9.1 m
- > Square meter: 27,500 m<sup>2</sup>
- > Surface material: Laminated, vinyl
- > Acoustic performance: 50dB
- > Note: World's biggest single movable wall project  
9.1 m height



**Marina Bay Sands, Singapore**

**SLIDO WALL 550-Z ACOUSTIC WALL**  
For door weights up to 550 kg, with sound insulation



- >

Area of application:

Suitable for flexible room partitioning with sound insulation
- >

Installation height (mm):

1,500 - 5,000
- >

Door width (mm):

600 - 1,240
- >

Door thickness (mm):

80 - 110, thickness depends on the version
- >

Version:

1 or 2 point guidance, door elements can be combined with 1 or 2 access doors and glass cut-out features, door elements can be stacked in open position with different parking options, system flush in closed position, with wall connection profiles
- >

Sound proofing level:

RwP 36-57 dB
- >

Material:

Running rails: Aluminium  
Running gear: Steel  
Rollers: Steel
- >

Finish:

Running rail: Powder-coated white, RAL 9010 (other RAL colours available)
- >

Adjustment facility:

Sliding door height adjustable  $\pm 5$  mm
- >

Operation:

Manual with hand crank, semi-automatic on request

**System set-up instructions**

1. Take measurements to determine opening height and width opening.
2. Determine the sliding door quantity.
3. Determine the parking location and orientation.

	Cat. No.
Slido Wall 550-Z, timber sliding wall, with sound insulation	943.41.020

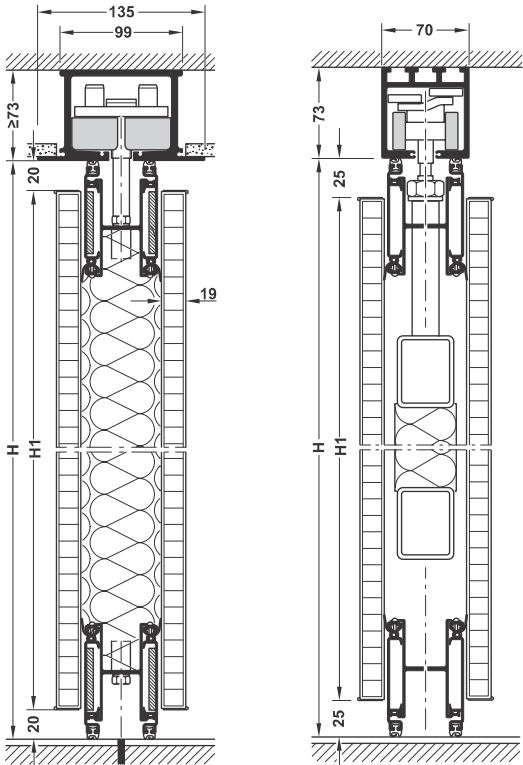


**Note:**  
Timber and glass versions can be combined.  
Please contact Häfele for technical advice and recommended installers.



**Order reference:**  
Available on request:

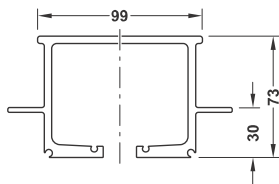
- > Installation height up to 15,000 mm
- > Door width over 1,240 mm
- > Door weight up to 1,600 kg
- > Surrounding or inset profiles
- > Semi-automatic operation
- > Combination with Dialock electronic access control system



With Track 2c  
H= total height  
H1 = door height

With Track 9

**Running track (optional)**



Track 2c-og



## SLIDO WALL 350-T ACOUSTIC WALL

For door weights up to 350 kg, with sound insulation



- > Area of application: Suitable for flexible room partitioning with sound insulation
- > Installation height (mm): 1,500 - 3,500
- > Door width (mm): 600 - 1,240
- > Door thickness (mm): 80 or 110
- > Version: 1 or 2 point guidance, door elements can be combined with 1 leaf or 2 leaf access doors can be stacked in open position with different parking options, system flush in closed position, the technical equipment is concealed behind the colour-lacquered edge trim of the glass cladding, with wall connection profiles
- > Sound proofing level: Rwp 44 or 46 dB
- > Material: Running rails: Aluminium  
Running gear: Steel  
Rollers: Steel
- > Finish: Running rail: Powder-coated white, RAL 9010 (other RAL colours available)
- > Adjustment facility: Sliding door height adjustable  $\pm 5$  mm
- > Operation: Manual with hand crank, semi-automatic on request

### System set-up instructions

1. Take measurements to determine opening height and width opening.
2. Determine the sliding door quantity.
3. Determine the parking location and orientation.

	Cat. No.
Slido Wall 350-T, glass sliding wall, with sound insulation	943.41.021



#### Note:

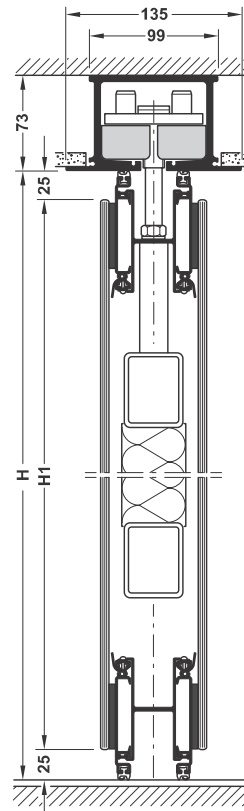
Timber and glass versions can be combined.  
Wall connection cladded with MDF and lacquered with the RAL colour of the door element.  
Please contact Häfele for technical advice and recommended installers.



#### Order reference:

Available on request:

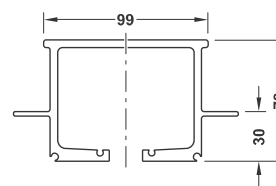
- > Semi-automatic operation
- > Combination with Dialock electronic access control system



H = total height  
H1 = door height

With Track 2c

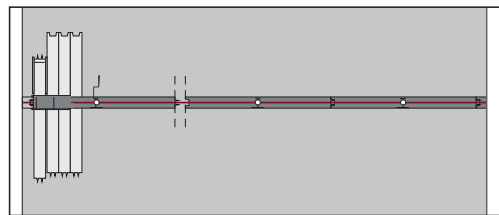
### Running track (optional)



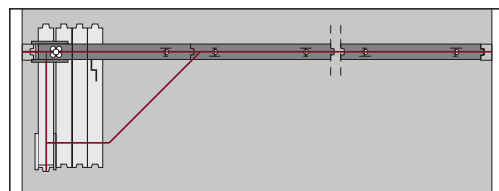
Track 2c-og

## TECHNICAL INFORMATION

### Parking examples

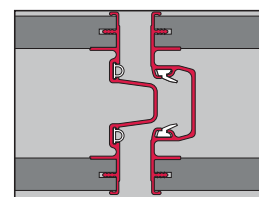
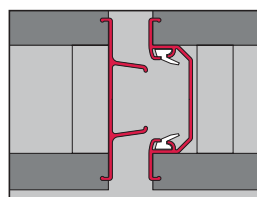
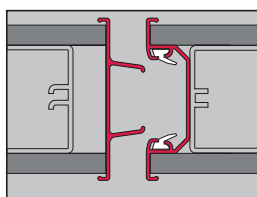
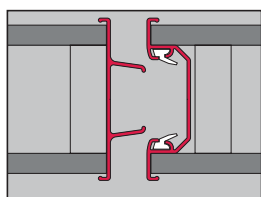


One point suspension (OG)



Two point suspension, forced guidance, (FG)

### Cross sections of panel joints



Type	550-Z/80	350-T	550-Z/90	550-Z/110
Panel thickness (mm)	80	80 or 110	90	110
Panel height (mm)	1500 - 3050	1500 - 3050	1500 - 4000	1500 - 5500
Panel width (mm)	600 - 1240	600 - 1240	600 - 1240	600 - 1240
Frame construction	Aluminium / timber	Aluminium	Aluminium / timber	Steel / Aluminium
Board material	10 mm, carried by the construction	10 mm safety-glass carried by the construction	18 mm, carried by construction	18 - 20 mm, part of the construction
Vertical profiles	Aluminium, anodised, with sealing profiles	Aluminium, anodised, with sealing profiles	Aluminium, anodised, with sealing profiles invisible when wall is closed	Aluminium, anodised, with sealing profiles
Pressure sleeves	Aluminium, black with double sealing profiles	Aluminium, black with double sealing profiles	Aluminium, black with double sealing profiles	Aluminium, black with double sealing profiles
Operation of pressure sleeves	Manual	Manual	Manual	Manual
Doors	Single door in panel or fixed single door	Single door in panel or fixed single door*	Single door in panel or fixed single door	Single or double door in panel or fixed single door
Sound insulation	36, 40, 42 and 44 dB Rw	44 dB Rw	37, 40, 42 and 45 dB Rw	38, 41, 43, 46 and 52 dB Rw
Weight (depending on sound insulation values)	Approx. 20 - 37 kg/m <sup>2</sup>	Approx. 65 kg/m <sup>2</sup>	Approx. 31, 33, 43 and 58 kg/m <sup>2</sup>	Approx. 33-55 kg/m <sup>2</sup>

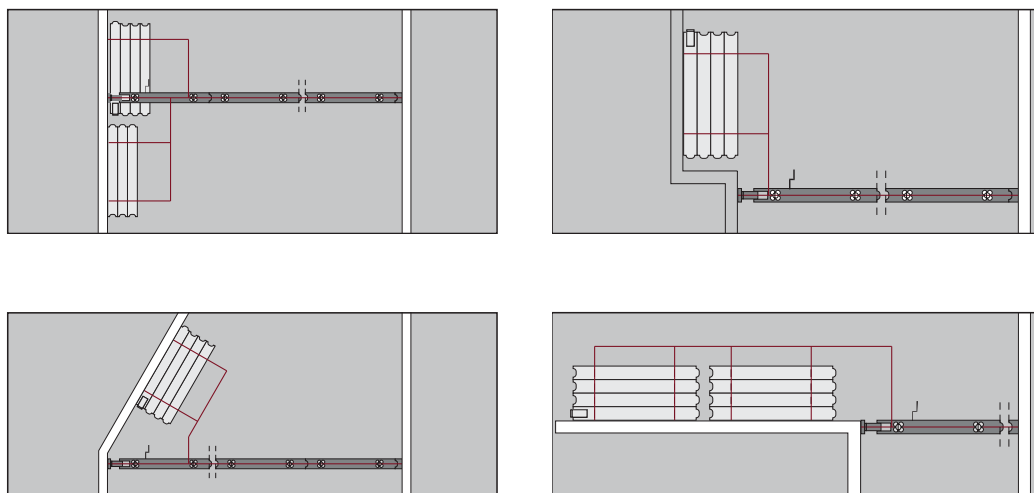


#### Note:

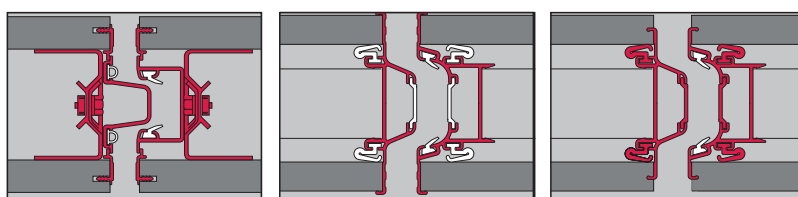
The dB-values have been measured according to ISO 140, Rw value established according ISO 717.  
Test reports available on demand.

\* Door elements not in glass, will be solid





Two point suspension, cross guidance, (CG)



550-Z/110I	550-Z/110S	550-Z/110SI
110 1500 - 5500 600 - 1240	110 1500 - 15000 600 - 1240	110 1500 - 15000 600 - 1240
Steel / Aluminium	Steel / Aluminium	Steel / Aluminium
18 - 20 mm, part of the construction	14 - 18 mm, carried by the construction	14 - 18 mm, carried by the construction
Aluminium, anodised, with sealing profiles, invisible when wall is closed	Aluminium, anodised, with magnetic strips and sealing profiles	Aluminium, anodised, with magnetic strips and sealing profiles, invisible when wall is closed
Aluminium, black with double sealing profiles	Aluminium, black with double sealing profiles	Aluminium, black with double sealing profiles
Manual	Manual or electrical	Manual or electrical
Single or double door in panel or fixed single door	Single or double door in panel or fixed single door	Single or double door in panel or fixed single door
38, 41, 43, 46 and 52 dB Rw	37, 43, 45, 47, 50, 53 and 56 dB Rw	37, 43, 45, 47, 50, 53 and 56 dB Rw
Approx. 33-55 kg/m <sup>2</sup>	Approx. 31-50 kg/m <sup>2</sup>	Approx. 31-50 kg/m <sup>2</sup>



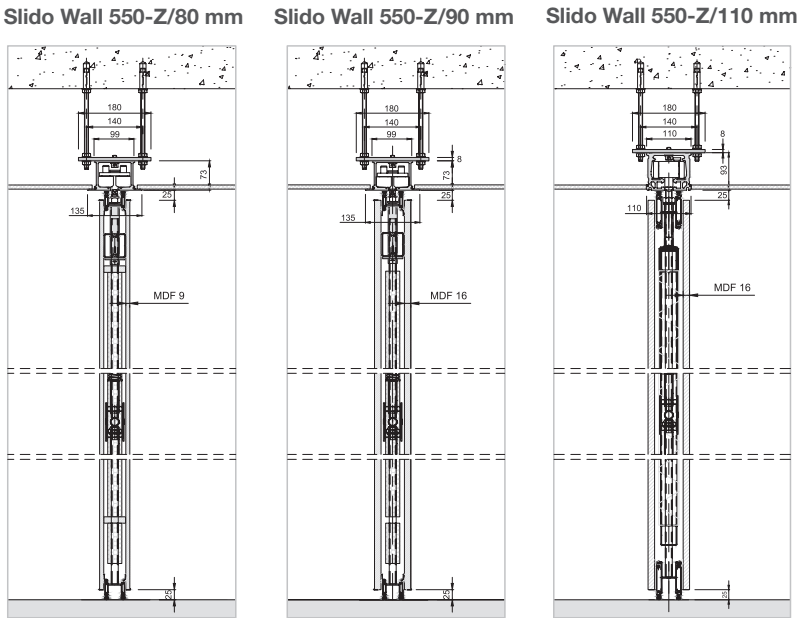
**Note:**

Other product versions and sizes on request.  
We will be pleased to supply you with detailed technical information.

TRACK OPTIONS

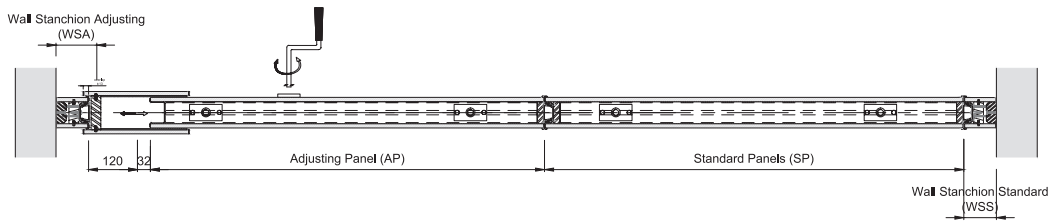


SECTION ELEVATIONS

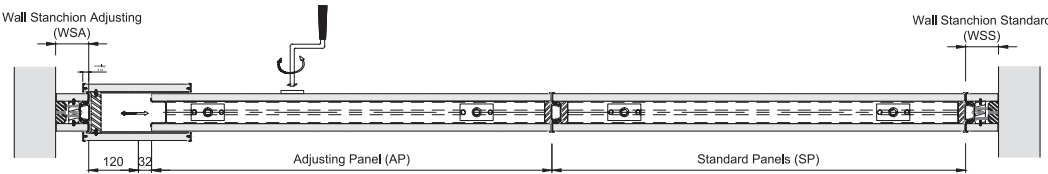


SECTION PLANS

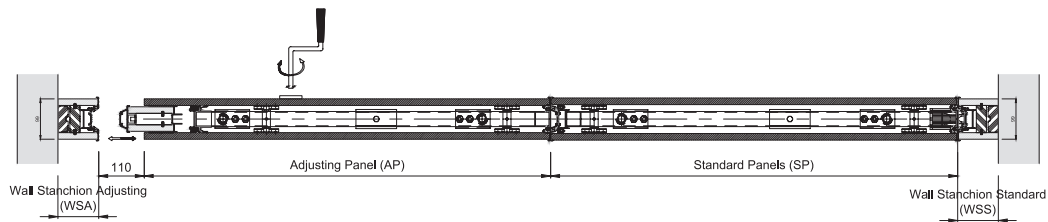
Panel details: Slido Wall 550-Z/80 mm



Panel details: Slido Wall 550-Z/90 mm



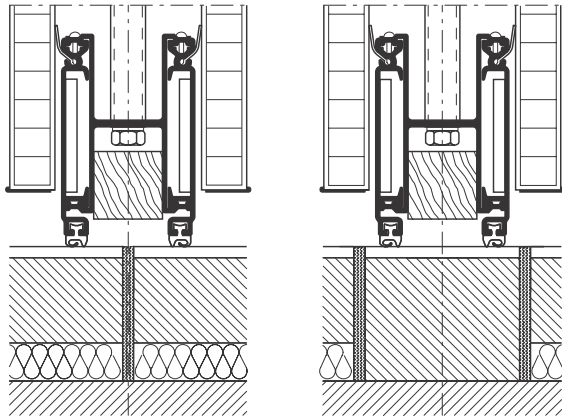
Panel details: Slido Wall 550-Z/110 mm



Dimensions in mm. Dimensional data not binding. We reserve the right to alter specifications without notice.



## EXAMPLE FLOOR CONNECTION



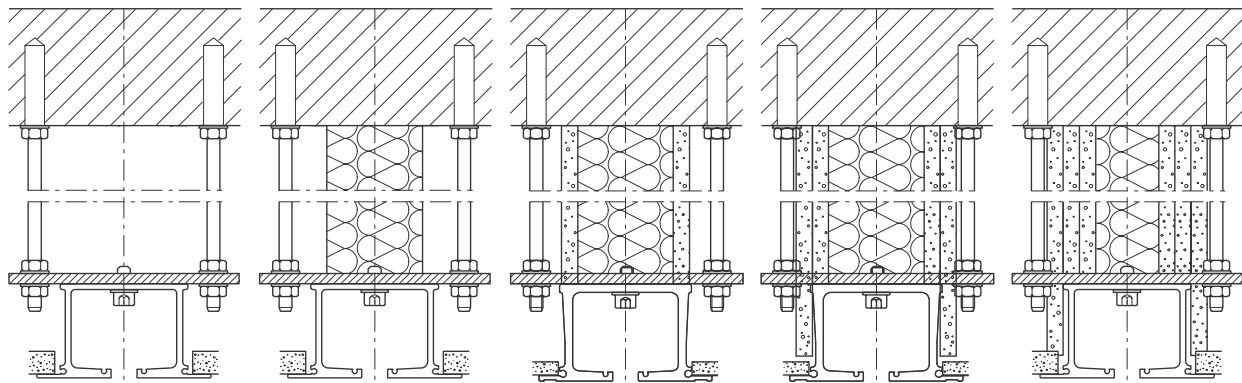
< RwP 50 dB

≥ RwP 50 dB

The connection to a seamless floor (not separated) in combination with a soundproofing system has a negative influence on the dB value. Floors that are separated by a gap or threshold are recommended when using soundproofing systems, and mandatory from a value of RwP 53 dB.

## EXAMPLE CEILING CONNECTION

Suspension with sound baffle



Without dB value

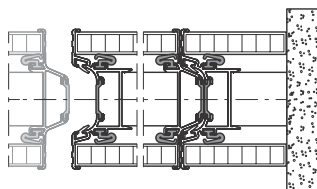
RwP 35-39 dB

RwP 40-46 dB

RwP 47-55 dB

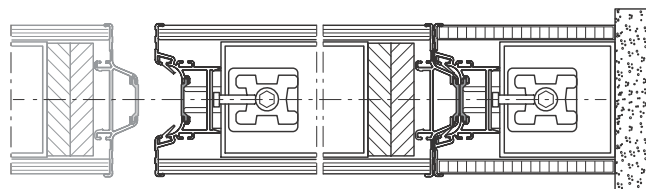
RwP > 56 dB

## WALL CONNECTION



Timber sliding wall

Wall connection clad with matching finishes of the door elements.



Glass sliding wall

Wall connection clad with MDF and lacquered with RAL colour of the door elements



732.98.650 SLIDO WALL - MOVABLE WALL SYSTEMS / 06.19

**Häfele New Zealand Ltd.**

Auckland Head Office 16 Accent Drive, East Tamaki, Auckland | Wellington Design Centre The Wool Store Level 1, 262 Thorndon Quay, Wellington | Christchurch Design Centre 14 Sir James Wattie Drive, Hornby, Christchurch

**Phone:** 0800 4 hafele | **Email:** info@hafele.co.nz | [www.hafele.co.nz](http://www.hafele.co.nz)

**HÄFELE LOCATIONS:**

**Australia** | MELBOURNE | SYDNEY | NEWCASTLE | BRISBANE | ADELAIDE | LAUNCESTON | HOBART | PERTH  
**New Zealand** | AUCKLAND | WELLINGTON | CHRISTCHURCH