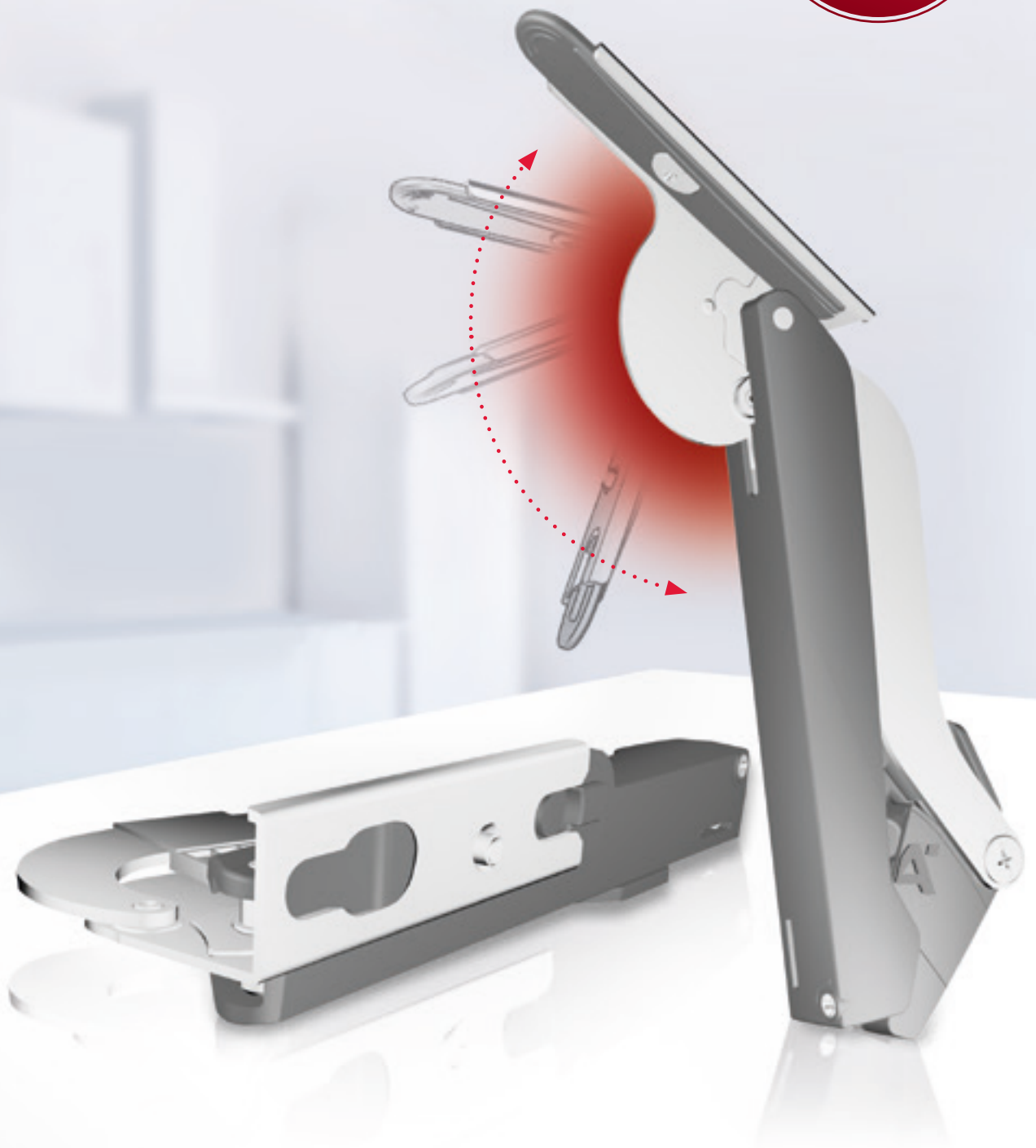


# HÄFELE

## MORE FREEDOM. FREE SPACE.

THE CLEVEREST COMBINATION  
OF LESS AND MORE.

COMPACT  
STRONG  
EFFICIENT







COMPACT

STRONG

EFFICIENT

## ELEGANCE FOR ANY FLAP.

SMALL AND STRONG  
FOR MORE FREEDOM IN  
FURNITURE CONSTRUCTION.  
ENGINEERED BY HÄFELE.

Flaps allow for a more beautiful and functional design of upper cabinets. Up until now, flaps have been used in high-end furniture. With the new Free space Häfele offers an innovative stay flap fitting which, with its strong features, now also allows for use in furniture of all categories.

More than 90 years of experience with furniture fittings, engineering expertise, and a close connection to the market and the people who work with furniture fittings on a daily basis led to the development of Free space. Inspired by the requirements of the market of tomorrow. Free space fulfills all demands for creative freedom and choice of material, design, ease of installation and convenient operation on a new level.



# LESS INSTALLATION DEPTH. MORE STORAGE SPACE.

Free space is characterised by an extremely compact size that goes hand in hand with a fine, understated, yet distinctive design.

This “less” creates “more” room and storage space in furniture, eliminates the need for large cover caps, and also opens up new freedom for modern furniture design such as convenient flaps for shallow cabinet depths.



Size of conventional  
flap fittings



COMPACT

STRONG

EFFICIENT

## FREE SPACE

is available in the standard colours,  
white, light grey and anthracite.



> white



> light grey



> anthracite



# LESS MODELS. MORE APPLICATIONS.

Load bearing capacity up to 10.7 kg  
with cabinet height of 400 mm



10.7 kg

COMPACT

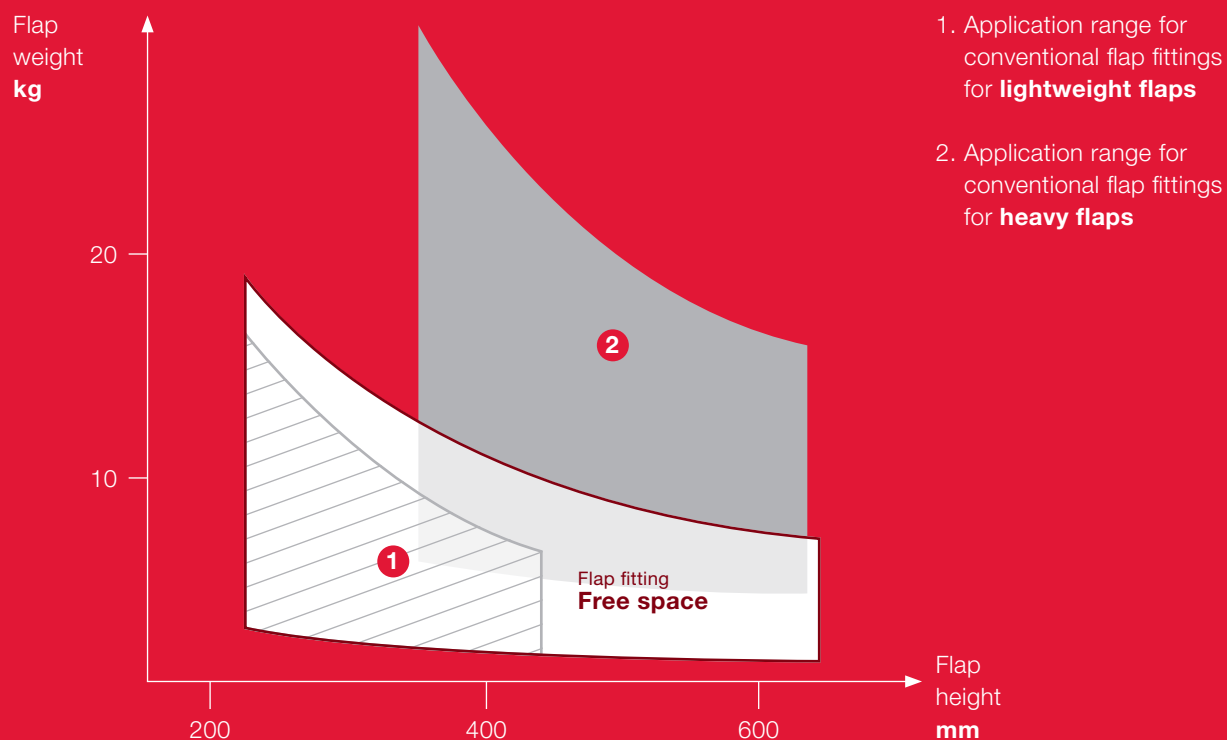
STRONG

EFFICIENT

**Free space**, across its different model variants, is characterised by a unique performance capability, covering up to 80 % of all common stay flap applications. This “more” thus allows using the same product series for a much wider range of applications than previous hingeless stay flap fittings.

**Free space** can be used for flaps with or without furniture handle:

- > Model series **Free space 1.11** for flaps with handles
- > Model series **Free space 1.8 push** for flaps without handle with Push-to-Open function; the associated push catches are colour matched to the Free space fittings



# LESS PARTS. MORE PRODUCTIVITY.



---

As the “smartest combination of less and more”, Free space on the one hand enables a very high degree of standardisation in production and, on the other hand, noticeably conserves resources in transport and logistics.

---



COMPACT

STRONG

**EFFICIENT**

# LESS STORAGE AREA. MORE SPACE.

## **Fewer individual parts ...**

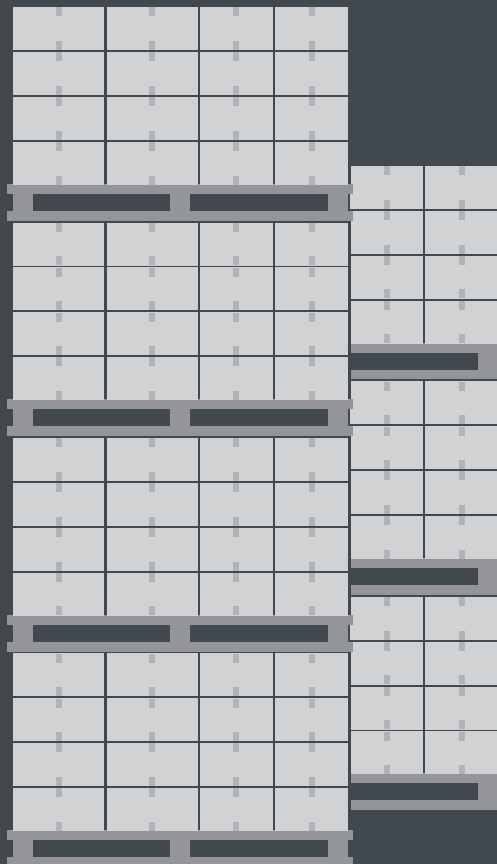
that means: Clear order lists  
and simplified warehousing.

## **More packaging units per lorry ...**

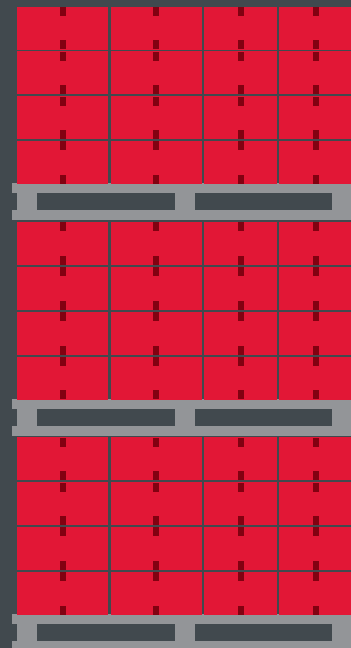
= fewer trips  
= less CO<sub>2</sub> emissions.

## **50 % savings ...**

in packaging, storage,  
and transport.



> Conventional flap fitting



> Free space

FREE SPACE.  
MORE FREEDOM.



- > For flaps up to 650 mm height.
- > Extremely compact dimensions for cabinets with internal depths from 63 mm.
- > For flaps with handle and flaps without handle with Push opening.
- > For opening angles of 90° or 107°.
- > Adjustment of height, side, tilting angle, and holding power possible.

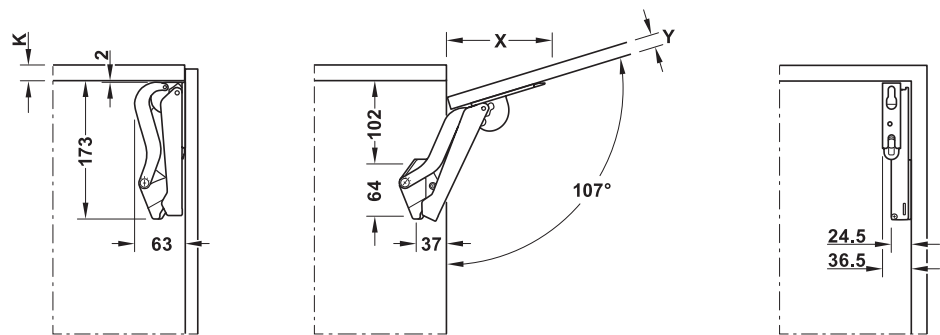


# FREE SPACE.

## TECHNICAL DATA.

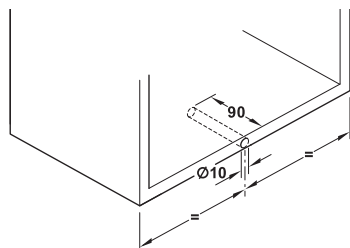


**Planning** Free space 1.11 and Free space 1.8 push



Front panel thickness Y mm	16	18	19	22	24	26	28
Distance X mm (with cabinet top panel thickness 16 mm)	117	110	107	96	90	83	76

**Planning push catch** for Free space 1.8 push







### Free space 1.11



Model	white	light grey	anthracite
B	372.27.700	372.27.500	372.27.350
C	372.27.701	372.27.501	372.27.351
D	372.27.702	372.27.502	372.27.352
E	372.27.703	372.27.503	372.27.353
F	372.27.704	372.27.504	372.27.354

Model Häfele Free Space 1.11	B	C	D	E	F
Cabinet height (mm)	Flap weight (kg)				
225	2,3–4,3	3,8–7,1	6,4–9,3	9,2–13,4	13,4–19,1
250	1,9–3,9	3,4–6,4	5,8–9,1	8,3–12,6	12,1–17,2
300	1,7–3,2	2,8–5,3	4,8–7,5	6,9–11,0	10,1–14,3
350	1,5–2,8	2,4–4,6	4,1–6,5	5,9–9,5	8,6–12,3
400	1,2–2,4	2,1–4,0	3,6–5,6	5,2–8,3	7,6–10,7
450	1,0–2,1	1,9–3,5	3,2–5,0	4,6–7,3	6,7–9,5
500	0,9–1,9	1,7–3,2	2,9–4,5	4,1–6,6	6,0–8,6
550	0,8–1,7	1,5–2,9	2,6–4,1	3,7–6,0	5,5–7,8
600	0,8–1,6	1,4–2,7	2,4–3,7	3,4–5,5	5,0–7,1
650	0,7–1,5	1,3–2,4	2,2–3,5	3,2–5,1	4,6–6,6

### Free space 1.8 push



Model	white	light grey	anthracite
B pto	372.27.705	372.27.505	372.27.355
C pto	372.27.706	372.27.506	372.27.356
D pto	372.27.707	372.27.507	372.27.357
E pto	372.27.708	372.27.508	372.27.358

Model Häfele Free space 1.8 push	B pto	C pto	D pto	E pto
Cabinet height (mm)	Flap weight (kg)			
225	2,3–4,3	3,8–7,1	6,4–9,3	9,2–13,4
250	1,9–3,9	3,4–6,4	5,8–9,1	8,3–12,6
300	1,7–3,2	2,8–5,3	4,8–7,5	6,9–11,0
350	1,5–2,8	2,4–4,6	4,1–6,5	5,9–9,5
400	1,2–2,4	2,1–4,0	3,6–5,6	5,2–8,3
450	1,0–2,1	1,9–3,5	3,2–5,0	4,6–7,3
500	0,9–1,9	1,7–3,2	2,9–4,5	4,1–6,6
550	0,8–1,7	1,5–2,9	2,6–4,1	3,7–6,0
600	0,8–1,6	1,4–2,7	2,4–3,7	3,4–5,5
650	0,7–1,5	1,3–2,4	2,2–3,5	3,2–5,1

# NEW FREEDOM IN MOTION. FREE.

THE HÄFELE **FLAP FITTING** PRODUCT RANGE.

ELEGANT MOTION IN THE ROOM.

> **Free swing**

HINGE AND LID  
STAY IN ONE.

> **Free flap**



THE ELEGANT  
ALL-PURPOSE FITTING.

> **Free flap H 1.5**





The new Free space builds on the outstanding product features of the existing Free family and, with its unique design, offers “the smartest combination of less and more” in the global furnishing market.

MAXIMUM ACCESS  
TO THE CABINET.

> Free up



MINIMAL SPACE REQUIREMENT.

> Free fold

The brochure for the  
complete **FREE FAMILY**

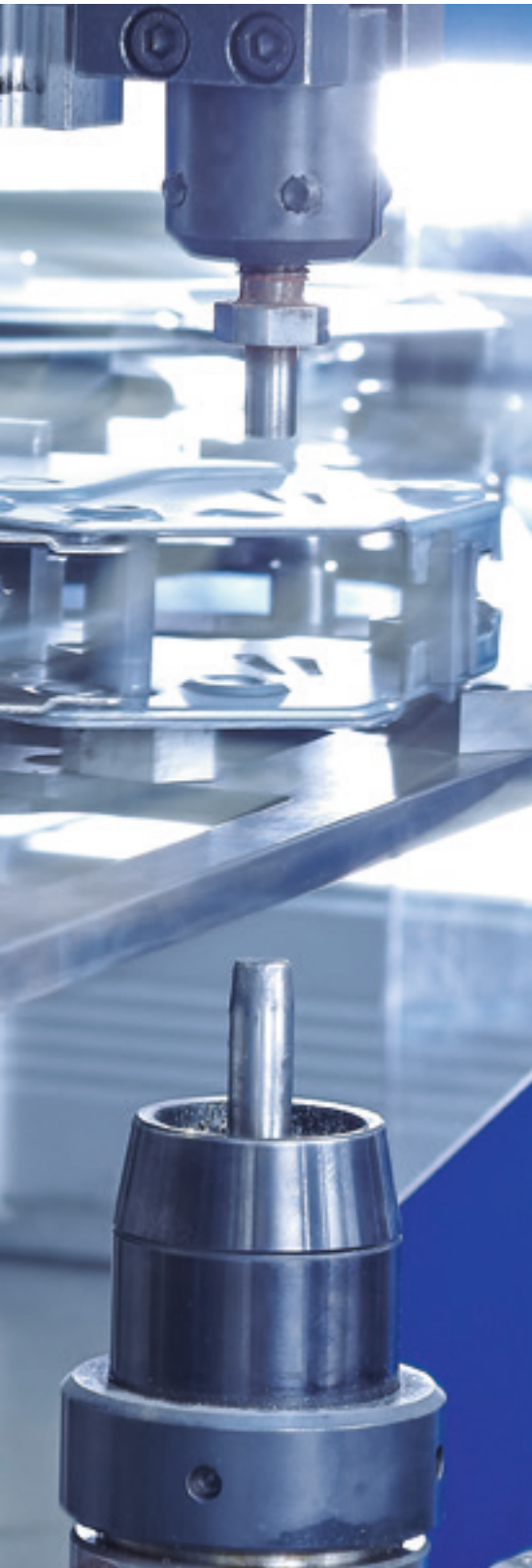


# EXPERIENCE TURNS TO EXPERTISE.

QUALITY WITHOUT COMPROMISE. ENGINEERED BY HÄFELE.







“The Complete Häfele” is a well-known term in the industry: It represents over 90 years of comprehensive experience with furniture fittings. Today, Häfele stands for even more. The expanded engineering expertise and the constant drive to think ahead lead to innovative solutions for the market of today and tomorrow.

The many years of experience with the Free flap family formed the basis for the next innovative technology step towards Free space.

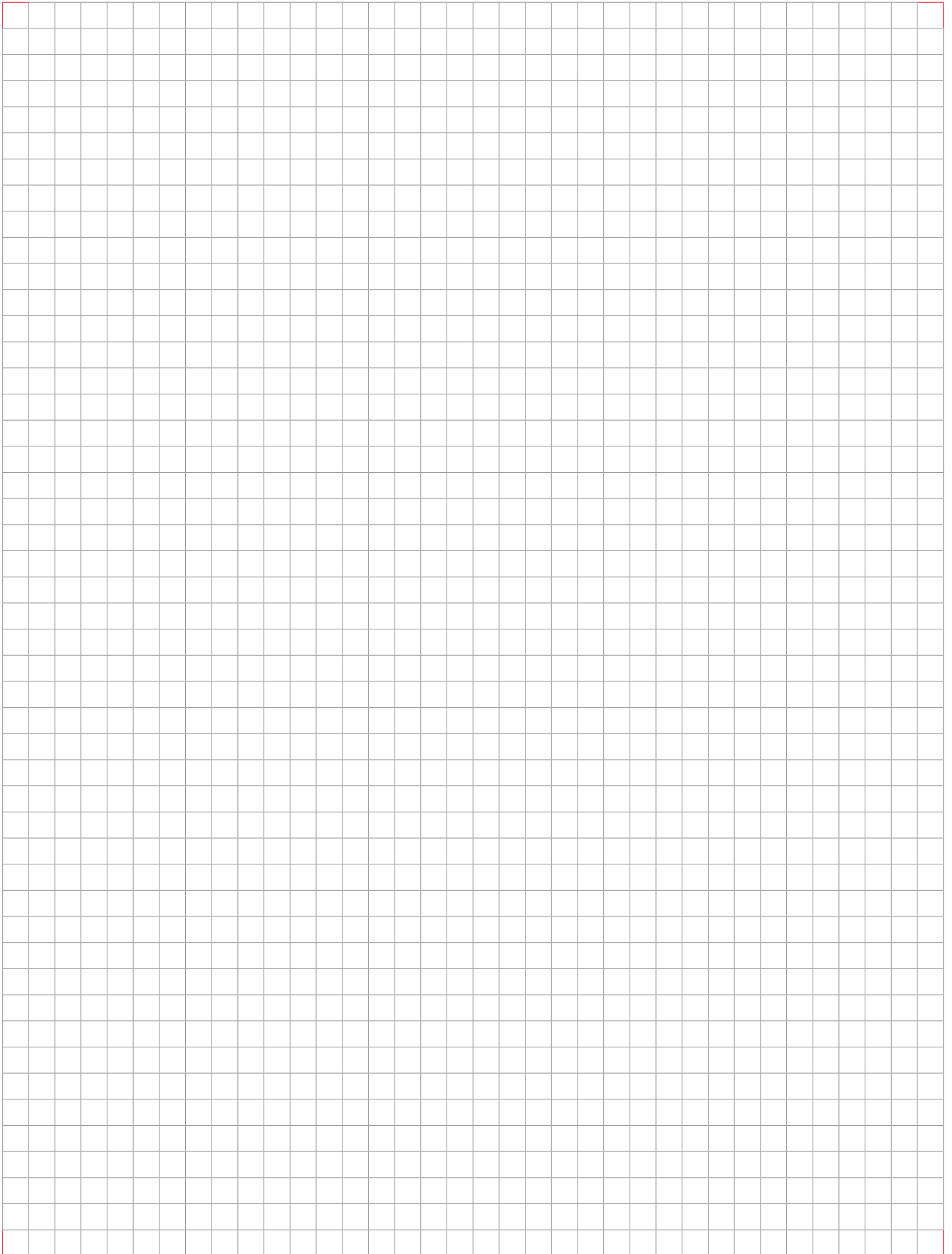
A new production hall, fully automated production facilities, and state-of-the-art standards form the basis for reliable production. Experienced development engineers in the plant ensure qualitative continuity. The goal is to connect the opening and closing of cabinets with a feeling of luxury and reliability. Engineered by Häfele.



Stress tests in heat and cold under continuous use ensure high quality.



## NOTES.





# HÄFELE

FREE SPACE 2020  
732.02.211

**Häfele New Zealand Ltd.** Auckland Head Office 16 Accent Drive, East Tamaki, Auckland 2013 | Wellington Design Centre The Wool Store, Level 1 262 Thorndon Quay | Christchurch Design Centre 12 Sir James Wattie Drive, Hornby  
**Phone:** 0800 442 335 | **Email:** [info@hafele.co.nz](mailto:info@hafele.co.nz) | **[www.hafele.co.nz](http://www.hafele.co.nz)**