

## FREE FAMILY FLAP FITTINGS

Engineered by Häfele.





Free fittings are a hinge and lid stay in one – which reduces not just the amount of space that the hardware requires in the cabinet but it also looks significantly more elegant. The force development of the 3-spring system and the motion geometry of the fittings have been consistently developed, which has made the housings noticeably slimmer. A discreet appearance in the background.

SLIMMER

LIGHTER

SIMPLER

## THE ELEGANCE OF OPENING

### FLAPS FOR MAXIMUM FREEDOM IN MOTION:

The fittings of the Free family give overhead flap doors new freedom in movement. This opens up more opportunities in the visual and technical design of furniture and has tangible benefits compared to hinged doors. But above all, it gives the furniture and the room undreamt of elegance and lightness. It doesn't matter whether a flap is lifted, tilted, swivelled or folded – it immediately provides added value. And last but not least, more efficiency when working.

More than 90 years of experience with furniture fittings, engineering expertise, and a close connection to the market and the people who work with furniture fittings on a daily basis led to the development of this product family. Inspired by the requirements of the market of tomorrow.

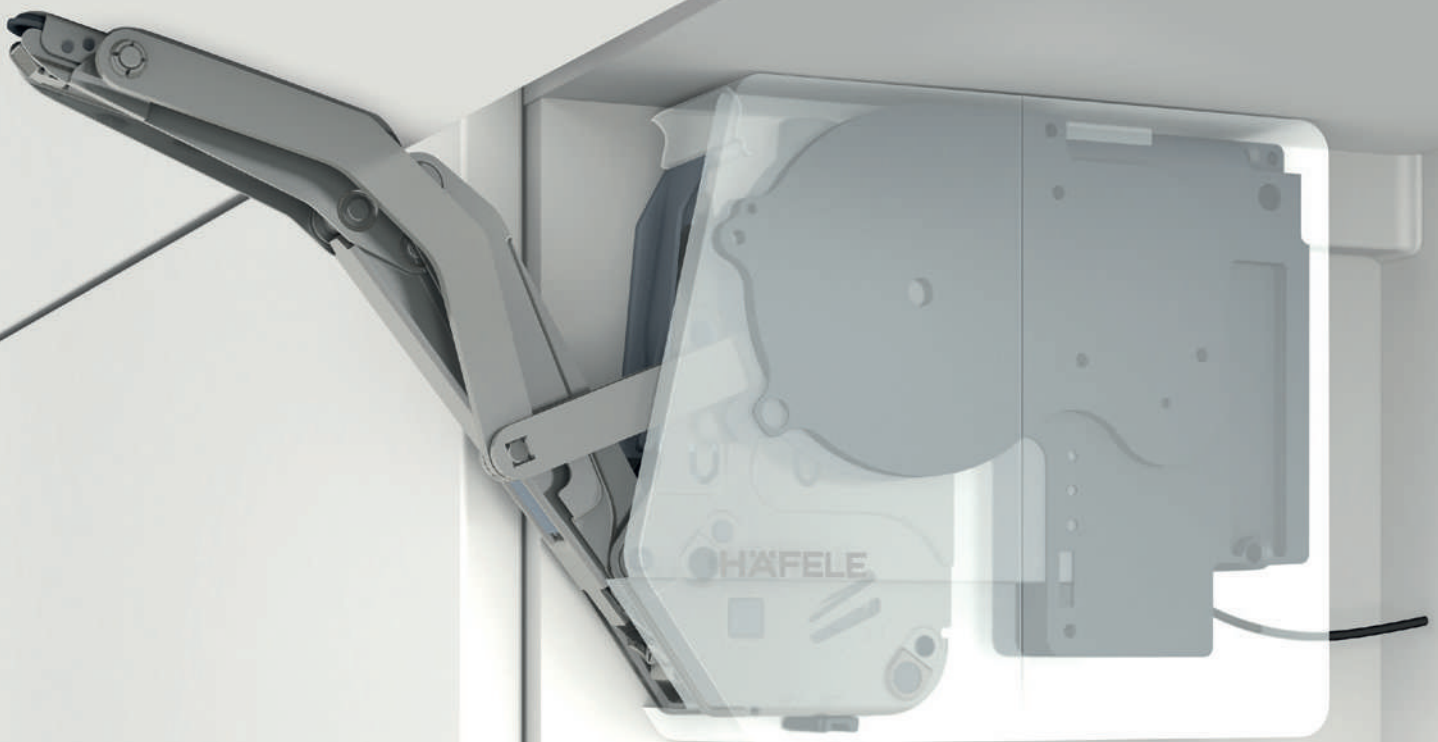
The Free family fulfils the demands for creative freedom and choice of material, design, ease of installation and convenient operation on a new level.

ENGINEERED  
BY HAFELE

# FREE E-DRIVE

NEW. CONVENIENT. FOR THE HIGHEST DEMANDS.

- > Restriction-free upgrade of Free fittings with E-Drive (installation position and application range remain unaffected)
- > Intuitive activation by slight push on the flap
- > Closing of the flap with push-button sender
- > Safe due to integrated auto-stop, collision avoidance and free swing function
- > Connection option for a 24 V Loox light (on / off determined by flap position)



ENGINEERED  
BY **HÄFELE**



## HÄFELE FREE E-DRIVE

### Electronic movement support for free flap fitting series.

Free e-drive is Häfele's electro-mechanical movement assistance for the entire application area of the Free flap fitting family. It impresses with its elegant design, gentle movements and its ease of installation and programming. The electrical drive solution is perfectly coordinated with all of the multi-award winning Free Family of flap fittings.



#### Note:

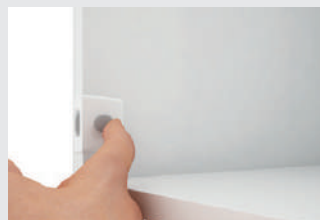
- > An e-drive drive unit that is suitable for the Free flap 1.7 and Free flap 3.15 standard fittings
- > An e-drive drive unit that is suitable for the Free fold, Free up and Free swing standard fittings
- > Standard programming and operating functions for all Free E applications
- > The installation position and the range of applications of the Free fittings remain unchanged
- > Component installation practically without tools
- > The e-drive unit can be retrofitted at any time (lever arm replacement also required with Free up and Free swing)
- > Extremely quiet and smooth running
- > With integrated free-swing function for effortless manual operation of the flap (even in the event of a power failure)
- > Automatic safety stop function with interruption of the opening or closing movement if obstacles are detected
- > Parallel connection for up to three drive units, collision avoidance with cross-corner installation situations and temporary disabling of the drive to clean the flap fronts can also be programmed (optional)

#### OPENING



The sensor switches, which are usually recessed in the side panels, react to gentle pressure on the flap front. They emit a radio signal and the flap moves quietly and automatically to the open position.

#### CLOSING



Pressing the button on the inner surface of the sensor switch sends a radio signal to the drive, which then automatically closes the flap. The movement to the closed position takes place quietly and gently.



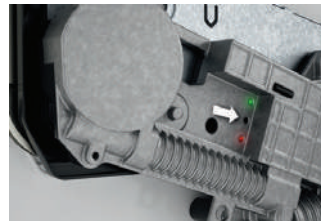
The free-swing function integrated in all e-drive drive units makes effortless manual operation of the flap applications possible. The multi-position stop function that is typical of the Free flap fittings ensures that the flap locks securely in any position.

#### INSTALLATION AND PROGRAMMING

The e-drive drive unit sits on the left-hand fitting. The lead is simply inserted into the drive unit.



24 V interior cabinet lighting from the Loox product range can also be operated using the drive unit. The light switches on when the flap is opened.



The push button sender assigning the programming of other functions take place via a switching button directly on the drive unit. All programming processes are accompanied and acknowledged by visual and acoustic system feedback.

# AS EASY AS PIE

**QUICKER** INSTALLATION SAVES TIME: ENGINEERED BY HÄFELE.

- 1 An impressive advantage of the Free family is the globally unique simple and quick installation. From one-handed installation and screw fixing of the fittings to clip-on mounting of the flaps, all working steps are optimised in such a way that the fitter saves a noticeable amount of time – for more efficiency.



---

## PLEXIGLASS DRILLING TEMPLATES

Precise locating of the drill holes is made easier.

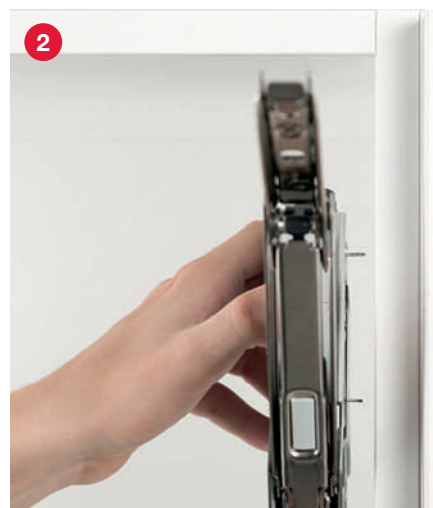
---

---

## UNIQUE PLUGS

For installing the fitting with a secure hold with one hand.

---



## PRE-MOUNTED EURO SCREWS

Incorporated in the fitting, now just screw in.



3



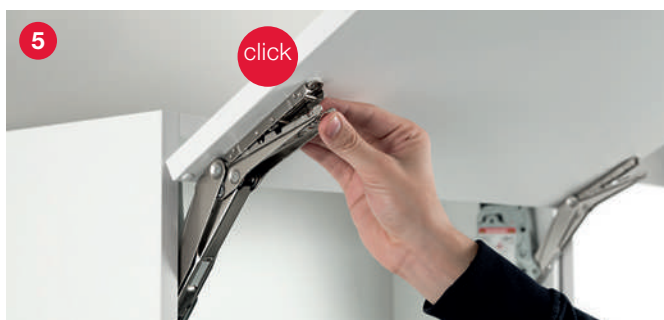
GLOBALLY UNIQUE  
CAN BE INSTALLED  
WITH ONE HAND!



4

## SYMMETRICAL SCREW-ON BRACKETS

For torsion-free fixing.



5

click

## INSTALLATION WITH CLIP-ON SYSTEM

Flap mounting is simple and secure. Dismantling is also done without tools.

## CONVENIENT ADJUSTMENT

The holding power of the fitting is adjusted using simple access from the front.  
The same applies to the optimum gap pattern – in three dimensions.



6

# INTELLIGENT USE OF SPACE

## MORE DESIGN FREEDOM AND MORE APPLICATION POSSIBILITIES: ENGINEERED BY HÄFELE.

The main focus of development was on maximum benefit for the customer. Easier operation quickly became topic number one. Häfele has created new standards for the Free family. Free turns opening and closing a cabinet into an experience.

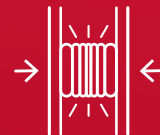
### 1. FEATHER-LIGHT MOVEMENT

The flaps can be moved with a minimum amount of effort. When opening or closing. Even with heavy flaps.



### 2. SOFT OPENING AND CLOSING

Undamped stops are a thing of the past. The final movement is soft and silent in both directions.



### 3. MULTI-POSITION STOP

The flaps are held reliably in any position, regardless of the flap weight. Making the handle reachable at all times.



### 4. PUSH-TO-OPEN (FLAP)

For front panels without handles. A gentle push of the underside of the flap opens the flap by several centimetres (optional) for easy handling of the flap.





## FREE FAMILY.

### PRODUCT RANGE OVERVIEW

- > All types of opening are available: flap, fold, swing and parallel lift up
- > Multi-position stop: flap locks reliably in any position
- > Gentle and quiet closing thanks to integrated soft closing mechanism
- > Quick, easy installation and disassembly thanks to the clip system for the front panel, the base plate pins of the fittings and the pre-mounted Euro screws
- > Convenient 3 dimensional front panel adjustment

## FREE, DUO AND MAXI.

### PRODUCT RANGE OVERVIEW

- > With hinge connection to the flap
- > Multi-position stop: flap locks reliably in any position
- > Can be used on one or both sides
- > Quick, easy installation and disassembly thanks to clip-on system
- > Holding power can be adjusted individually to suit flap weight
- > For front panels with and without handle
- > Less space required inside the cabinet

#### HÄFELE FREE SPACE **Page 11**



- > Extremely suitable for a large range of flap sizes
- > Hinge connection not required
- > Extremely compact design
- > Extremely fast and time saving processing

#### HÄFELE FREE FLAP H 1.5 **Page 37**



- > Ideal for small to medium-sized wall unit applications
- > Less space required inside the cabinet
- > Easy, power-assisted opening of the flap
- > Holding power adjustment

#### HÄFELE FREE FLAP 1.7 **Page 17**



- > Extremely suitable for small to medium-sized flaps
- > Featherlight flap opening
- > Hinge connection not required
- > Push-to-open for front panels without handle
- > Electronically assisted opening available via E-Drive

#### HÄFELE MAXI **Page 45**



- > Ideally suited for wide and heavy flaps
- > Less space required inside the cabinet
- > Easy, power-assisted opening of the flap
- > Holding power adjustment
- > Soft closing optional via fitting
- > Häfele Maxi Up for toy boxes or similar page 51

#### HÄFELE FREE FLAP 3.15 **Page 20**



- > Extremely suitable for large, heavy flaps in wall units
- > Featherlight flap opening
- > Hinge connection not required
- > Push-to-open for front panels without handle
- > Electronically assisted opening available via E-Drive

#### HÄFELE DUO STANDARD/DUO FORTE **Page 53**



- > Lid stay and flap stay in one
- > For small wall units and bar cabinet applications
- > Less space required inside the cabinet
- > With adjustable holding power or braking effect

#### HÄFELE FREE FOLD **Page 25**



- > Ideal for high wall units with large fronts
- > Handle is always easily accessible, even with high front panels
- > Minimal space required inside the room
- > Material combination possible in the front panel design
- > Finger-safe thanks to patented finger protection of the connecting hinge
- > Electronically assisted opening available via E-Drive

#### HÄFELE FREE UP **Page 29**



- > Ideal for microwave or wall units with front panels above
- > Also optimally suited for cabinets with cornices or side panels
- > Cross bar can be shortened to individual cabinet widths
- > Electronically assisted opening available via E-Drive

#### HÄFELE FREE SWING **Page 33**



- > Ideal for large, one-piece front panels
- > Swivels around cornice profiles and surface mounted lights
- > Cabinet contents are extremely easy to access
- > Cross bar can be shortened to individual cabinet widths
- > Electronically assisted opening available via E-Drive



## FREE SPACE

MORE FREEDOM.

Free space is characterised by an extremely compact size that goes hand in hand with a fine, understated, yet distinctive design.

- > For flaps up to 650 mm height
- > Extremely compact dimensions for cabinets with internal depths from 63 mm
- > For flaps with handle and flaps without handle with Push opening
- > For opening angles of 90° or 107°
- > Adjustment of height, side, tilting angle, and holding power possible

## HÄFELE FREE SPACE 1.11 / 6.15

### PRODUCT RANGE OVERVIEW



#### MODERN, COMPACT DESIGN

Minimal installation depth from 63 mm and installation height from 172 mm do noticeably leave more usable storage space in the cabinet.

#### COMPATIBLE DRILL PATTERN

The plug-in pins on the base plate suit 1:1 the 32/37 mm line boring dimensions on the side wall and allow for a pre-installation of the fitting with just one hand.



#### FASTEST INSTALLATION

Coming equipped with just one pre-set fixing screw, Free space can be fitted in record time.

#### OPTIMIZED LOGISTICS AND PROCESSING

Less components are reducing transport and storage volume. At the same time installation becomes less complex and more time-efficient.



#### SELF-EXPLANATORY ADJUSTMENTS

Intuitive and comfortable tension adjustment from the front. 3D flap alignment with generous adjustment ranges. Integrated opening angle limiter 107° to 90°.

#### MATURE HÄFELE FLAP TECHNOLOGY

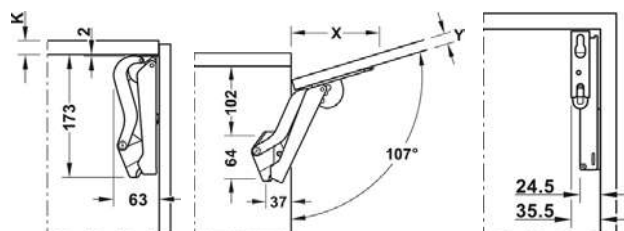
Free space expands the proven Free product family. Basic functions as adjustability of the tension force, integrated soft-close or 'push-to-open' are just a given as are high reliability and quality from the Häfele plant.

**HÄFELE FREE SPACE 1.11 FLAP FITTING**

For standard applications with handles



- > Area of application: For standard stay flap applications with front height up to 650 mm
- > Material: Housing: Plastic, front fixing bracket and support lever: Steel
- > Finish/colour: Front fixing bracket and support lever: Nickel plated or black (with black housing) housing: White, light grey, anthracite or black
- > Opening angle: 90° or 107°
- > Adjustment facility: Height, side, tilting angle, holding power
- > Installation: Fitting for screw fixing with pre-mounted Euro screws, front panel without tools, for sliding onto pre-mounted fixing screws

**Planning**

| Front panel thickness Y (mm)                                | 16  | 18  | 19  | 22 | 24 | 26 | 28 |
|---|-----|-----|-----|----|----|----|----|
| Distance X (mm)<br>(with cabinet top panel thickness 16 mm) | 117 | 110 | 107 | 96 | 90 | 83 | 76 |

| Model | White      | Light Grey | Anthracite | Black      |
|-------|------------|------------|------------|------------|
| B     | 372.27.700 | 372.27.500 | 372.27.350 | 372.27.300 |
| C     | 372.27.701 | 372.27.501 | 372.27.351 | 372.27.301 |
| D     | 372.27.702 | 372.27.502 | 372.27.352 | 372.27.302 |
| E     | 372.27.703 | 372.27.503 | 372.27.353 | 372.27.303 |
| F     | 372.27.704 | 372.27.504 | 372.27.354 | 372.27.304 |

Packing: 1 or 25 set

**Supplied with:**

- > 1 stay flap fitting set (1 piece each left/right)
- > 4 fixing screws for front panel
- > 1 set of installation instructions with paper drilling template for side panel

**Order Reference:**

The choice of the stay flap fitting for front panels with handles depends on the cabinet height and flap weight including handle. Model selection see sample measurements table.

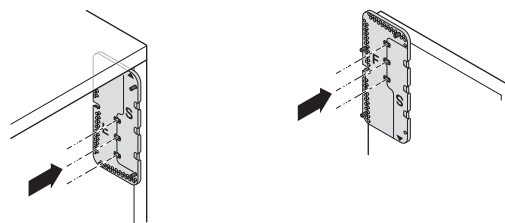
**Sample measurements table for selecting the right model based on cabinet height and flap weight including handle**

| Model<br>Häfele<br>Free space<br>1.11 | B                | C       | D       | E        | F         |
|---------------------------------------|------------------|---------|---------|----------|-----------|
| Cabinet height (mm)                   | Flap weight (kg) |         |         |          |           |
| 225                                   | 2.3-4.3          | 3.8-7.1 | 6.4-9.3 | 9.2-13.4 | 13.4-19.1 |
| 250                                   | 1.9-3.9          | 3.4-6.4 | 5.8-9.1 | 8.3-12.6 | 21.1-17.2 |
| 275                                   | 1.9-3.5          | 3.1-5.8 | 5.3-8.2 | 7.5-12.0 | 11.0-15.6 |
| 300                                   | 1.7-3.2          | 2.8-5.3 | 4.8-7.5 | 6.9-11.0 | 10.1-14.3 |
| 325                                   | 1.6-3.0          | 2.6-4.9 | 4.4-7.0 | 6.4-10.2 | 9.3-13.2  |
| 350                                   | 1.5-2.8          | 2.4-4.6 | 4.1-6.5 | 5.9-9.5  | 8.6-12.3  |
| 375                                   | 1.3-2.6          | 2.2-4.3 | 3.8-6.0 | 5.5-8.8  | 8.1-11.4  |
| 400                                   | 1.2-2.4          | 2.1-4.0 | 3.6-5.6 | 5.2-8.3  | 7.6-10.7  |
| 425                                   | 1.1-2.3          | 2.0-3.8 | 3.4-5.3 | 4.9-7.8  | 7.1-10.1  |
| 450                                   | 1.0-2.1          | 1.9-3.5 | 3.2-5.0 | 4.6-7.3  | 6.7-9.5   |
| 475                                   | 1.0-2.0          | 1.8-3.4 | 3.0-4.7 | 4.3-7.0  | 6.4-9.0   |
| 500                                   | 0.9-1.9          | 1.7-3.2 | 2.9-4.5 | 4.1-6.6  | 6.0-8.6   |
| 525                                   | 0.9-1.8          | 1.6-3.0 | 2.7-4.3 | 3.9-6.3  | 5.7-8.2   |
| 550                                   | 0.8-1.7          | 1.5-2.9 | 2.6-4.1 | 3.7-6.0  | 5.5-7.8   |
| 575                                   | 0.8-1.7          | 1.4-2.8 | 2.5-3.9 | 3.6-5.7  | 5.2-7.4   |
| 600                                   | 0.8-1.6          | 1.4-2.7 | 2.4-3.7 | 3.4-5.5  | 5.0-7.1   |
| 625                                   | 0.7-1.5          | 1.3-2.5 | 2.3-3.6 | 3.3-5.3  | 4.8-6.8   |
| 650                                   | 0.7-1.5          | 1.3-2.4 | 2.2-3.5 | 3.2-5.1  | 4.6-6.6   |

**FREE SPACE DRILLING JIG**

Side panel

Front panel



|  | Cat. No.   |
|--|------------|
|  | 372.27.602 |

Packing: 1 piece



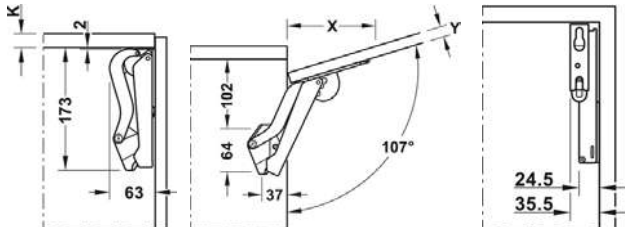
## HÄFELE FREE SPACE 1.8 PUSH FLAP FITTING

For standard applications with handles



- > Area of application: For all stay flap applications without handle with front height up to 650 mm
- > Material: Housing: Plastic, front fixing bracket and support lever: Steel
- > Finish/colour: Front fixing bracket and support lever: Nickel plated or black (with black housing) housing: White, light grey, anthracite or black
- > Opening angle: 90° or 107°
- > Adjustment facility: Height, side, tilting angle, holding power, release distance on push catch
- > Installation: Fitting for screw fixing with pre-mounted Euro screws, front panel fixing without tools, for sliding onto pre-mounted fixing screws

### Planning



| Front panel thickness Y (mm)                                | 16  | 18  | 19  | 22 | 24 | 26 | 28 |
|---|-----|-----|-----|----|----|----|----|
| Distance X (mm)<br>(with cabinet top panel thickness 16 mm) | 117 | 110 | 107 | 96 | 90 | 83 | 76 |

| Model | White      | Light Grey | Anthracite | Black      |
|-------|------------|------------|------------|------------|
| B pto | 372.27.705 | 372.27.505 | 372.27.355 | 372.27.305 |
| C pto | 372.27.706 | 372.27.506 | 372.27.356 | 372.27.306 |
| D pto | 372.27.707 | 372.27.507 | 372.27.357 | 372.27.307 |
| E pto | 372.27.708 | 372.27.508 | 372.27.358 | 372.27.308 |

Packing: 1 or 25 set



#### Supplied with:

- > 1 stay flap fitting set (1 piece each left/right)
- > 4 fixing screws for front panel
- > 1 free push catch
- > 1 set of installation instructions with paper drilling template for side panel



#### Order Reference:

The choice of the stay flap fitting for front panels with handles depends on the cabinet height and flap weight including handle. Model selection see sample measurements table.

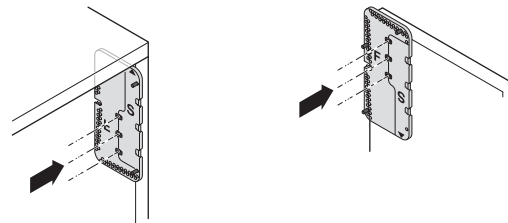
### Sample measurements table for selecting the right model based on cabinet height and flap weight including handle

| Model Häfele Free space 1.8 push | B pto            | C pto   | D pto   | E pto    |
|----------------------------------|------------------|---------|---------|----------|
| Cabinet height (mm)              | Flap weight (kg) |         |         |          |
| 225                              | 2.3-4.3          | 3.8-7.1 | 6.4-9.3 | 9.2-13.4 |
| 250                              | 1.9-3.9          | 3.4-6.4 | 5.8-9.1 | 8.3-12.6 |
| 275                              | 1.9-3.5          | 3.1-5.8 | 5.3-8.2 | 7.5-12.0 |
| 300                              | 1.7-3.2          | 2.8-5.3 | 4.8-7.5 | 6.9-11.0 |
| 325                              | 1.6-3.0          | 2.6-4.9 | 4.4-7.0 | 6.4-10.2 |
| 350                              | 1.5-2.8          | 2.4-4.6 | 4.1-6.5 | 5.9-9.5  |
| 375                              | 1.3-2.6          | 2.2-4.3 | 3.8-6.0 | 5.5-8.8  |
| 400                              | 1.2-2.4          | 2.1-4.0 | 3.6-5.6 | 5.2-8.3  |
| 425                              | 1.1-2.3          | 2.0-3.8 | 3.4-5.3 | 4.9-7.8  |
| 450                              | 1.0-2.1          | 1.9-3.5 | 3.2-5.0 | 4.6-7.3  |
| 475                              | 1.0-2.0          | 1.8-3.4 | 3.0-4.7 | 4.3-7.0  |
| 500                              | 0.9-1.9          | 1.7-3.2 | 2.9-4.5 | 4.1-6.6  |
| 525                              | 0.9-1.8          | 1.6-3.0 | 2.7-4.3 | 3.9-6.3  |
| 550                              | 0.8-1.7          | 1.5-2.9 | 2.6-4.1 | 3.7-6.0  |
| 575                              | 0.8-1.7          | 1.4-2.8 | 2.5-3.9 | 3.6-5.7  |
| 600                              | 0.8-1.6          | 1.4-2.7 | 2.4-3.7 | 3.4-5.5  |
| 625                              | 0.7-1.5          | 1.3-2.5 | 2.3-3.6 | 3.3-5.3  |
| 650                              | 0.7-1.5          | 1.3-2.4 | 2.2-3.5 | 3.2-5.1  |

### FREE SPACE DRILLING JIG

Side panel

Front panel



| Cat. No.   |
|------------|
| 372.27.602 |

Packing: 1 piece

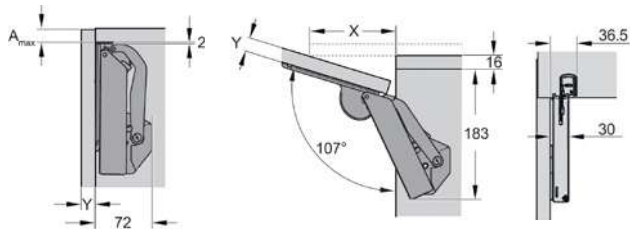
## HÄFELE FREE SPACE 6.15 FLAP FITTING

### For standard applications with handles



- > Area of application: For standard stay flap applications with front height up to 650 mm
- > Material: Housing: Plastic, front fixing bracket and support lever: Steel
- > Finish/colour: Front fixing bracket and support lever: Nickel plated or black (with black housing) housing: White, light grey, anthracite or black
- > Opening angle: 90° or 107°
- > Adjustment facility: Height, side, tilting angle, holding power
- > Installation: Fitting for screw fixing with pre-mounted Euro screws, front panel without tools, for sliding onto pre-mounted fixing screws

#### Planning



| Front panel thickness Y (mm)                                | 16  | 18  | 19  | 22 | 24 | 26 | 28 |
|---|-----|-----|-----|----|----|----|----|
| Distance X (mm)<br>(with cabinet top panel thickness 16 mm) | 117 | 110 | 107 | 96 | 90 | 83 | 76 |

| Model | White      | Light Grey | Anthracite | Black      |
|-------|------------|------------|------------|------------|
| G     | 372.27.721 | 372.27.521 | 372.27.321 | 372.27.421 |
| H     | 372.27.722 | 372.27.522 | 372.27.322 | 372.27.422 |

Packing: 1 or 25 set



#### Supplied with:

- > 1 stay flap fitting set (1 piece each left/right)
- > 4 fixing screws for front panel
- > 1 set of installation instructions with paper drilling template for side panel



#### Order Reference:

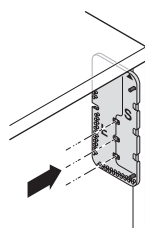
The choice of the stay flap fitting for front panels with handles depends on the cabinet height and flap weight including handle. Model selection see sample measurements table.

#### Sample measurements table for selecting the right model based on cabinet height and flap weight including handle

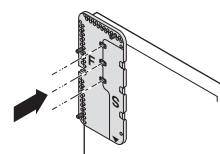
| Model Häfele Free space 6.15 | G                | H         |
|------------------------------|------------------|-----------|
| Cabinet height (mm)          | Flap weight (kg) |           |
| 350                          | 11.7-18.9        | 18.0-25.7 |
| 375                          | 10.9-17.6        | 16.8-24.0 |
| 400                          | 10.2-16.5        | 15.8-22.5 |
| 425                          | 9.6-15.5         | 14.8-21.2 |
| 450                          | 9.1-14.7         | 14.0-20.0 |
| 475                          | 8.6-13.9         | 13.3-18.9 |
| 500                          | 8.2-13.2         | 12.6-18.0 |
| 525                          | 7.8-12.6         | 12.0-17.1 |
| 550                          | 7.4-12.0         | 11.5-16.4 |
| 575                          | 7.1-11.5         | 11.0-15.7 |
| 600                          | 6.8-11.0         | 10.5-15.0 |
| 625                          | 6.5-10.6         | 10.1-14.4 |
| 650                          | 6.3-10.2         | 9.7-13.8  |

#### FREE SPACE DRILLING JIG

Side panel



Front panel



|  | Cat. No.   |
|--|------------|
|  | 372.27.602 |

Packing: 1 piece

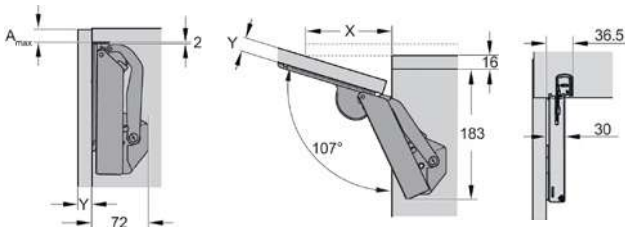
## HÄFELE FREE SPACE 5.15 PUSH FLAP FITTING

For standard applications with handles



- > Area of application: For all stay flap applications without handle with front height up to 650 mm
- > Material: Housing: Plastic, front fixing bracket and support lever: Steel
- > Finish/colour: Front fixing bracket and support lever: Nickel plated or black (with black housing) housing: White, light grey, anthracite or black
- > Opening angle: 90° or 107°
- > Adjustment facility: Height, side, tilting angle, holding power, release distance on push catch
- > Installation: Fitting for screw fixing with pre-mounted Euro screws, front panel fixing without tools, for sliding onto pre-mounted fixing screws

### Planning



| Front panel thickness Y (mm)                                | 16  | 18  | 19  | 22 | 24 | 26 | 28 |
|---|-----|-----|-----|----|----|----|----|
| Distance X (mm)<br>(with cabinet top panel thickness 16 mm) | 117 | 110 | 107 | 96 | 90 | 83 | 76 |

| Model      | White      | Light Grey | Anthracite | Black      |
|------------|------------|------------|------------|------------|
| 5.15 F pto | 372.27.730 | 372.27.530 | 372.27.330 | 372.27.330 |
| 5.15 G pto | 372.27.731 | 372.27.531 | 372.27.331 | 372.27.331 |
| 5.15 H pto | 372.27.732 | 372.27.532 | 372.27.332 | 372.27.332 |

Packing: 1 or 25 set



#### Supplied with:

- > 1 stay flap fitting set (1 piece each left/right)
- > 4 fixing screws for front panel
- > 1 free push catch
- > 1 set of installation instructions with paper drilling template for side panel



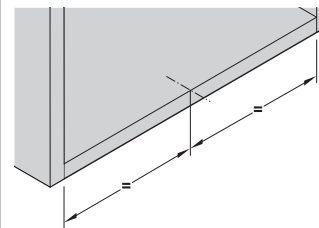
#### Order Reference:

The choice of the stay flap fitting for front panels with handles depends on the cabinet height and flap weight including handle. Model selection see sample measurements table.

Sample measurements table for selecting the right model based on cabinet height and flap weight including handle

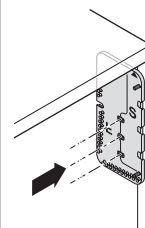
| Model Häfele Free space 5.15 push | F pto            | G pto     | H pto     |
|-----------------------------------|------------------|-----------|-----------|
| Cabinet height (mm)               | Flap weight (kg) |           |           |
| 350                               | 8.7-12.3         | 11.7-18.9 | 18.0-25.7 |
| 375                               | 8.1-11.5         | 10.9-17.6 | 16.8-24.0 |
| 400                               | 7.6-10.8         | 10.2-16.5 | 15.8-22.5 |
| 425                               | 7.2-10.1         | 9.6-15.5  | 14.8-21.2 |
| 450                               | 6.8-9.6          | 9.1-14.7  | 14.0-20.0 |
| 475                               | 6.4-9.1          | 8.6-13.9  | 13.3-18.9 |
| 500                               | 6.1-8.6          | 8.2-13.2  | 12.6-18.0 |
| 525                               | 5.8-8.2          | 7.8-12.6  | 12.0-17.1 |
| 550                               | 5.5-7.8          | 7.4-12.0  | 11.5-16.4 |
| 575                               | 5.3-7.5          | 7.1-11.5  | 11.0-15.7 |
| 600                               | 5.1-7.2          | 6.8-11.0  | 10.5-15.0 |
| 625                               | 4.9-6.9          | 6.5-10.6  | 10.1-14.4 |
| 650                               | 4.7-6.6          | 6.3-10.2  | 9.7-13.8  |

Positioning with 1 door catch

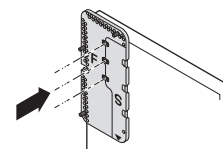


### FREE SPACE DRILLING JIG

Side panel



Front panel



| Cat. No.   |
|------------|
| 372.27.602 |

Packing: 1 piece

# FREE FLAP

## HINGE AND LID STAY IN ONE.

Classic flap function with opening angles of 90° and 107° for flaps with medium to low height.  
Less space required above. Compact dimensions for cabinets low in depth.  
Available in two models depending on the weight of the flap.

- > Opening angles of 90° and 107°
- > Compact dimensions for cabinets with depths starting at 109 mm
- > Version 1.7 for flaps up to 450 mm height
- > Version 3.15 for flaps up to 650 mm height
- > Cover cap for 3.15 is also suitable for 1.7 (harmonious appearance in interior)
- > Suitable in combination with cornices
- > Push-to-open feature for front panels without handles





## HÄFELE FREE FLAP 1.7



### Note:

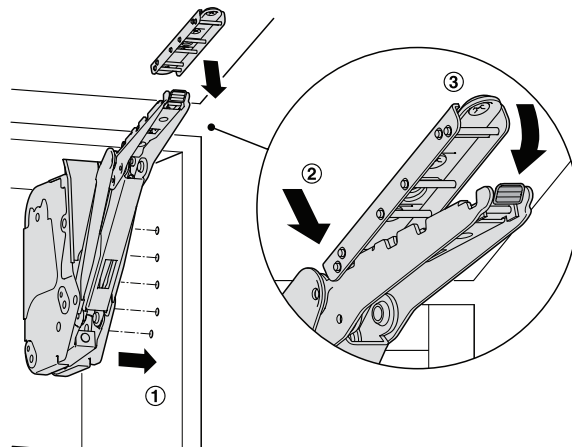
- > Hinge-less stay flap fittings:  
Two models Häfele Free flap 1.7 and 3.15 are designed for all of the most common cabinet height and flap weight combinations.
- > Pleasant operating feeling even with heavy flaps
- > Stylish and compact design allows the fittings to be used in furniture with low depth.
- > Easy, rational and time-saving processing
- > Suitable for front panels with and without handle (in combination with special door catch)
- > For flaps made of wood or with aluminium frames

### HIGHEST OPERATING CONVENIENCE



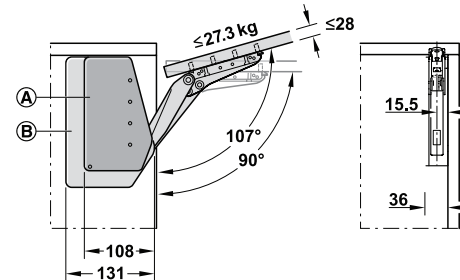
- > Minimum opening resistance
- > Flap locks in any position (multi-position stop)
- > Smooth, soft closing movement
- > Integrated soft closing mechanism

### QUICK FIXING SYSTEM



- ① Plug fit fitting onto pre-drilled side panel, tighten Euro screws that were pre-mounted in the factory
- ②-③ Fit front panel and engage

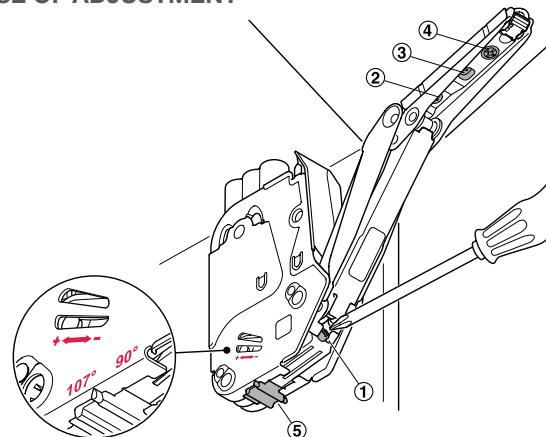
### MAXIMUM FLEXIBILITY AND SIDE SPACE REQUIREMENT



- Ⓐ Häfele Free flap 1.7
- Ⓑ Häfele Free flap 3.15

- > Compact design
- > Drilling pattern compatibility for both models (processing in 32/37 series drilled holes)
- > Stylish white and anthracite cover caps
- > Front panel weight max. 27.3 kg (with cabinet height of 350 mm)
- > Front panel thickness up to 28 mm (without collision at 90° opening angle)
- > Opening angle 107° (can be limited to 90°)

### EASE OF ADJUSTMENT



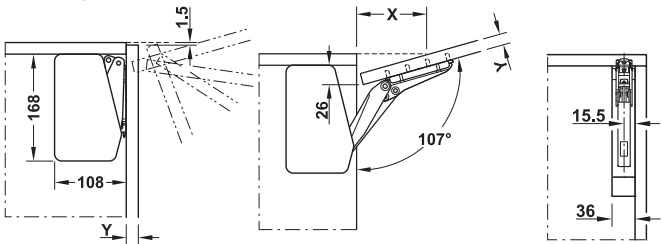
Holding power ① and front panel ②-④ conveniently adjusted from the front, required opening angle via slide ⑤ (model 3.15)

**HÄFELE FREE FLAP 1.7 FLAP FITTING**  
For small to medium-sized, one-piece flaps



- > Material: Cover cap: Plastic, Fitting: Steel
- > Finish/colour: Cover caps: White or Anthracite
- > Opening angle: 107° (can be limited to 90° by means of optional opening angle restraint)
- > Adjustment facility: Height/side/tilting angle of front ±1.5 mm, holding power
- > Installation: Fitting for screw fixing with pre-mounted Euro screws, Front panel without tools (clip system onto pre-mounted screw-on brackets)

**Planning**



| Front panel thickness Y (mm)                                | 16 | 19 | 22 | 26 | 28 |
|---|----|----|----|----|----|
| Distance X (mm)<br>(with cabinet top panel thickness 16 mm) | 83 | 74 | 64 | 52 | 46 |

| Model               | White      | Anthracite |
|---------------------|------------|------------|
| A                   | 372.91.720 | 372.91.370 |
| B                   | 372.91.721 | 372.91.371 |
| B (Bulk/trade pack) | 372.91.180 | -          |
| C                   | 372.91.722 | 372.91.372 |
| C (Bulk/trade pack) | 372.91.182 | -          |

Packing: 1 set (Bulk = 20 sets)



**Supplied with:**

- > 1 or 20 Flap fitting sets (left and right)
- > 2 or 40 Front fixing brackets
- > 1 Installation instructions
- > 1 Paper drilling template
- > 1 Cover cap set (white or anthracite)



**Order Reference:**

The model selection of the flap fitting set depends on the cabinet height and flap weight. Refer to page 19.



**Recommended products:**

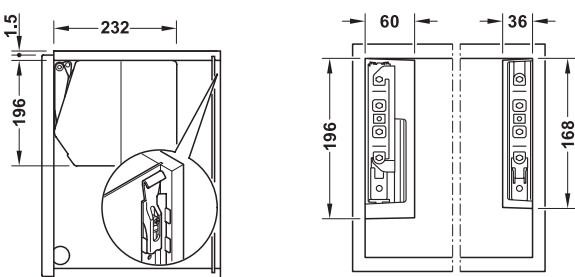
- > Push catches ..... 23
- > Drilling jigs ..... 23

**HÄFELE FREE FLAP 1.7 E-DRIVE - COMPLETE SET**  
For small to medium-sized, one-piece flaps

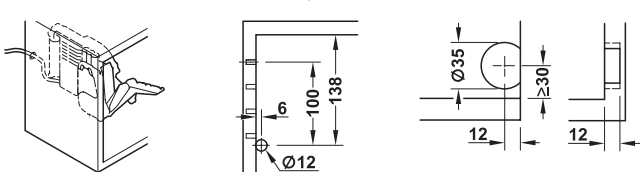


- > Material: Cover cap: Plastic, Fitting: Zinc alloy
- > Finish/colour: Cover cap: White or Anthracite
- > Cabinet height (mm): 200–450
- > Flap width (mm): ≤1200 mm (≥1200 mm = 2 sets)
- > Input voltage: 100 - 240 V AC/ 50–60 Hz/ 1.3 A
- > Nominal voltage: 24 V DC/ 2.5 A
- > Output voltage: For interior cabinet lighting: 24V DC/ 1.2 A
- > Stand-by power (W): 1
- > Radio frequency: 2.4 GHz
- > Protection class: II

**Planning and space requirement**



**Push button sender and cable guide installation**



For other planning dimensions see installation instructions

| Description                        | White      | Anthracite |
|------------------------------------|------------|------------|
| Free Flap 1.7 e-drive complete set | 372.29.700 | 372.29.701 |

Packing: 1 set



**Supplied with:**

- > 1 E-drive (left hand mounted only)
- > 1 Set of replacement cover caps
- > 1 Driver and mains lead (2000 mm)
- > 2 Push button senders
- > 1 Set of installation and operating instructions
- > 1 Paper drilling template for side panel drilling pattern
- > 1 Plastic drilling jig for push button sender



**Note:**

Please order Free Flap 1.7 fitting set separately.

# HÄFELE FREE FLAP 1.7 SAMPLE MEASUREMENTS TABLES

## FRONT PANELS WITH HANDLE

Sample measurements table for maximum flap weight including handle

| Model Häfele Free flap 1.7 | A                | B       | C        |
|----------------------------|------------------|---------|----------|
| Cabinet height (mm)        | Flap weight (kg) |         |          |
| 200                        | 1.7–4.6          | 3.6–7.9 | 6.8–14.7 |
| 225                        | 1.5–4.1          | 3.1–7.1 | 6.0–13.1 |
| 250                        | 1.3–3.8          | 2.9–6.4 | 5.4–11.8 |
| 275                        | 1.2–3.3          | 2.5–5.7 | 4.8–10.6 |
| 300                        | 1.1–3.1          | 2.4–5.1 | 4.4–9.6  |
| 325                        | 1.0–2.8          | 2.1–4.6 | 4.0–8.8  |
| 350                        | 0.9–2.6          | 2.0–4.2 | 3.7–8.1  |
| 375                        | 0.9–2.3          | 1.9–3.8 | 3.5–7.5  |
| 400                        | 0.8–2.1          | 1.7–3.6 | 3.2–7.0  |
| 425                        | 0.7–1.9          | 1.5–3.4 | 2.9–6.5  |
| 450                        | 0.6–1.7          | 1.4–3.2 | 2.7–6.1  |

## FRONT PANELS WITHOUT HANDLE (PUSH-TO-OPEN)

Sample measurements table for maximum flap weight when using door catch

| Cabinet height (mm) | Model<br>Häfele Free<br>flap 1.7 | Quantity and model of door catches |            |            |            |            |
|---------------------|----------------------------------|------------------------------------|------------|------------|------------|------------|
|                     |                                  | 1 x type 1                         | 1 x type 2 | 1 x type 3 | 2 x type 2 | 2 x type 3 |
|                     |                                  | Flap weight (kg)                   |            |            |            |            |
| 200                 | A                                | 1.7–3.1                            | 3.1–4.6    | –          | –          | –          |
|                     | B                                | –                                  | 3.6–5.4    | 5.4–7.9    | –          | –          |
|                     | C                                | –                                  | –          | 6.8–8.3    | 8.3–12.3   | 12.3–14.7  |
| 225                 | A                                | 1.5–2.9                            | 2.9–4.1    | –          | –          | –          |
|                     | B                                | –                                  | 3.1–4.7    | 4.7–7.1    | –          | –          |
|                     | C                                | –                                  | –          | 6.0–7.1    | 7.1–11.6   | 11.6–13.1  |
| 250                 | A                                | 1.3–3.1                            | 3.1–3.8    | –          | –          | –          |
|                     | B                                | –                                  | 2.9–5.1    | 5.1–6.4    | –          | –          |
|                     | C                                | –                                  | –          | 5.4–6.9    | 6.9–10.5   | 10.5–11.8  |
| 275                 | A                                | 1.2–3.0                            | 3.0–3.3    | –          | –          | –          |
|                     | B                                | 2.5–3.3                            | 3.3–5.0    | 5.0–5.7    | –          | –          |
|                     | C                                | –                                  | –          | 4.8–6.8    | 6.8–10.0   | 10.0–10.6  |
| 300                 | A                                | 1.1–2.7                            | 2.7–3.1    | –          | –          | –          |
|                     | B                                | 2.4–3.0                            | 3.0–4.6    | 4.6–5.1    | –          | –          |
|                     | C                                | –                                  | –          | 4.4–6.6    | 6.6–9.6    | –          |
| 325                 | A                                | 1.0–2.6                            | 2.6–2.8    | –          | –          | –          |
|                     | B                                | 2.1–3.0                            | 3.0–4.2    | 4.2–4.6    | –          | –          |
|                     | C                                | –                                  | –          | 4.0–6.0    | 6.0–8.8    | –          |
| 350                 | A                                | 0.9–2.4                            | 2.4–2.6    | –          | –          | –          |
|                     | B                                | 2.0–2.9                            | 2.9–4.2    | –          | –          | –          |
|                     | C                                | –                                  | 3.7–3.9    | 3.9–5.9    | 5.9–8.1    | –          |
| 375                 | A                                | 0.9–2.3                            | –          | –          | –          | –          |
|                     | B                                | 1.9–2.7                            | 2.7–3.8    | –          | –          | –          |
|                     | C                                | –                                  | 3.5–3.9    | 3.9–5.7    | 5.7–7.5    | –          |
| 400                 | A                                | 0.8–2.1                            | –          | –          | –          | –          |
|                     | B                                | 1.7–2.7                            | 2.7–3.6    | –          | –          | –          |
|                     | C                                | –                                  | 3.2–3.8    | 3.8–5.6    | 5.6–7.0    | –          |
| 425                 | A                                | 0.7–1.9                            | –          | –          | –          | –          |
|                     | B                                | 1.5–2.3                            | 2.3–3.4    | –          | –          | –          |
|                     | C                                | –                                  | 2.9–4.0    | 4.0–5.0    | 5.0–6.5    | –          |
| 450                 | A                                | 0.6–1.7                            | –          | –          | –          | –          |
|                     | B                                | 1.4–2.4                            | 2.4–3.2    | –          | –          | –          |
|                     | C                                | –                                  | 2.7–3.3    | 3.3–5.1    | 5.1–6.1    | –          |



### Ordering example:

It is recommended that when ordering unit for cabinet height 400 mm, flap weight 6 kg:  
1 Häfele Free flap 1.7 set, model C and 2 Door catches, type 2



### Recommended products:

- > Push catches ..... 23
- > Drilling jigs ..... 23

## HÄFELE FREE FLAP 3.15



### Note:

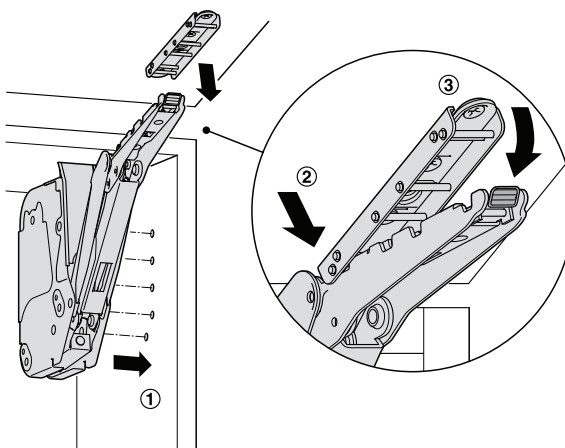
- > Hinge-less stay flap fittings:  
Two models Häfele Free flap 1.7 and 3.15 are designed for all of the most common cabinet height and flap weight combinations.
- > Pleasant operating feeling even with heavy flaps
- > Stylish and compact design allows the fittings to be used in furniture with low depth.
- > Easy, rational and time-saving processing
- > Suitable for front panels with and without handle (in combination with special door catch)
- > For flaps made of wood or with aluminium frames

### HIGHEST OPERATING CONVENIENCE



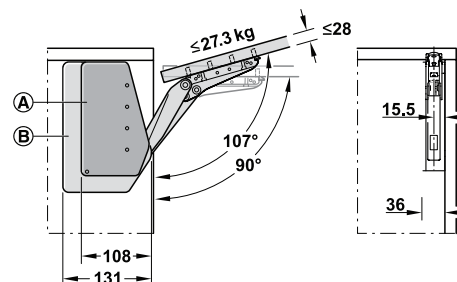
- > Minimum opening resistance
- > Flap locks in any position (multi-position stop)
- > Smooth, soft closing movement
- > Integrated soft closing mechanism

### QUICK FIXING SYSTEM



- ① Plug fit fitting onto pre-drilled side panel, tighten Euro screws that were pre-mounted in the factory
- ② – ③ Fit front panel and engage

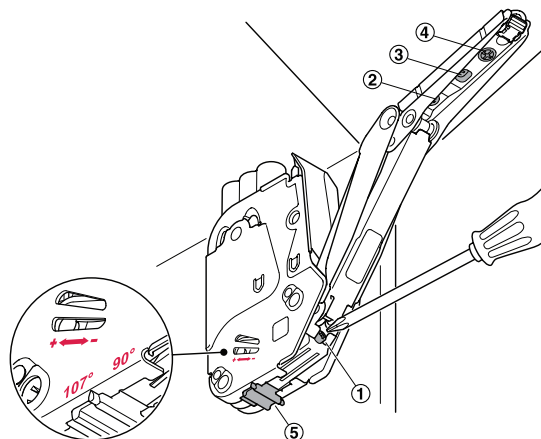
### MAXIMUM FLEXIBILITY AND SIDE SPACE REQUIREMENT



- Ⓐ Häfele Free flap 1.7
- Ⓑ Häfele Free flap 3.15

- > Compact design
- > Drilling pattern compatibility for both models (processing in 32/37 series drilled holes)
- > Stylish white and anthracite cover caps
- > Front panel weight max. 27.3 kg (with cabinet height of 350 mm)
- > Front panel thickness up to 28 mm (without collision at 90° opening angle)
- > Opening angle 107° (can be limited to 90°)

### EASE OF ADJUSTMENT



Holding power ① and front panel ② – ④ conveniently adjusted from the front, required opening angle via slide ⑤ (model 3.15)



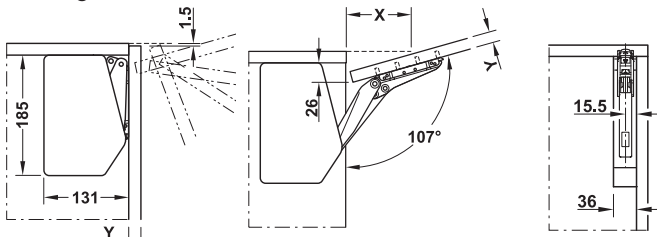
## HÄFELE FREE FLAP 3.15 FLAP FITTING

For large, one-piece flaps



- > Material: Cover cap: Plastic, Fitting: Steel
- > Finish/colour: Cover caps: White or Anthracite
- > Opening angle: 107° (can be limited to 90° by means of optional opening angle restraint)
- > Adjustment facility: Height/side/tilting angle of front ±1.5 mm, holding power
- > Installation: Fitting for screw fixing with pre-mounted Euro screws, Front panel without tools (clip system onto pre-mounted screw-on brackets)

### Planning



| Front panel thickness Y (mm)                                | 16 | 19 | 22 | 26 | 28 |
|---|----|----|----|----|----|
| Distance X (mm)<br>(with cabinet top panel thickness 16 mm) | 83 | 74 | 64 | 52 | 46 |

| Model               | White      | Anthracite |
|---------------------|------------|------------|
| D                   | 372.91.730 | 372.91.380 |
| D (Bulk/trade pack) | 372.91.190 | -          |
| E                   | 372.91.731 | 372.91.381 |
| F                   | 372.91.732 | 372.91.382 |
| G                   | 372.91.733 | 372.91.383 |

Packing: 1 set (Bulk = 20 sets)



#### Supplied with:

- > 1 or 20 Flap fitting sets (left and right)
- > 2 or 40 Front fixing brackets
- > 1 Installation instructions
- > 1 Paper drilling template
- > 1 Cover cap set (white or anthracite)



#### Order Reference:

The model selection of the flap fitting set depends on the cabinet height and flap weight. Refer to page 22.



#### Recommended products:

- > Push catches ..... 23
- > Drilling jigs ..... 23

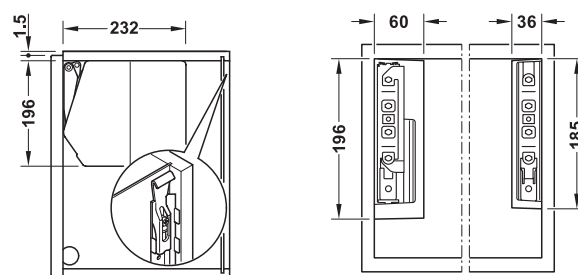
## HÄFELE FREE FLAP 3.15 E-DRIVE - COMPLETE SET

For large, one-piece flaps

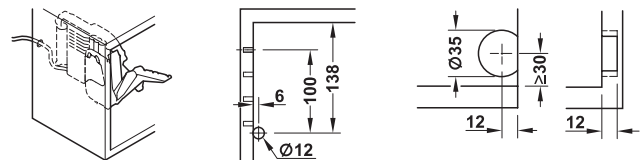


- > Material: Cover cap: Plastic, Fitting: Zinc alloy
- > Finish/colour: Cover cap: White or Anthracite
- > Cabinet height (mm): 350–650
- > Flap width (mm): ≤1200 mm (≥1200 mm = 2 sets)
- > Input voltage: 100 - 240 V AC/ 50–60 Hz/ 1.3 A
- > Nominal voltage: 24 V DC/ 2.5 A
- > Output voltage: For interior cabinet lighting: 24V DC/ 1.2 A
- > Stand-by power (W): 1
- > Radio frequency: 2.4 GHz
- > Protection class: II

### Planning and space requirement



### Push button sender and cable guide installation



For other planning dimensions see installation instructions

| Description                         | White      | Anthracite |
|-------------------------------------|------------|------------|
| Free Flap 3.15 e-drive complete set | 372.29.702 | 372.29.703 |

Packing: 1 set



#### Supplied with:

- > 1 E-drive (left hand mounted only)
- > 1 Set of replacement cover caps
- > 1 Driver and mains lead (2000 mm)
- > 2 Push button senders
- > 1 Set of installation and operating instructions
- > 1 Paper drilling template for side panel drilling pattern
- > 1 Plastic drilling jig for push button sender



#### Note:

Please order Free Flap 3.15 fitting set separately.

## HÄFELE FREE FLAP 3.15 SAMPLE MEASUREMENTS TABLES

### FRONT PANELS WITH HANDLE

Sample measurements table for maximum flap weight including handle

| Model Häfele Free flap 3.15 | D                | E        | F         | G         |
|-----------------------------|------------------|----------|-----------|-----------|
| Cabinet height (mm)         | Flap weight (kg) |          |           |           |
| 350                         | 5.2–11.0         | 6.7–14.3 | 10.1–21.4 | 13.5–27.3 |
| 375                         | 4.9–10.2         | 6.3–13.1 | 9.4–19.8  | 12.5–25.2 |
| 400                         | 4.7–9.6          | 5.9–12.4 | 8.9–18.6  | 11.8–23.3 |
| 425                         | 4.4–9.0          | 5.6–11.6 | 8.3–17.4  | 11.0–21.8 |
| 450                         | 4.1–8.4          | 5.2–10.9 | 7.8–16.3  | 10.4–20.5 |
| 475                         | 3.9–8.0          | 4.9–10.3 | 7.4–15.4  | 9.8–19.3  |
| 500                         | 3.7–7.5          | 4.7–9.7  | 7.0–14.6  | 9.2–18.3  |
| 525                         | 3.5–7.1          | 4.4–9.2  | 6.6–13.9  | 8.8–17.3  |
| 550                         | 3.3–6.8          | 4.2–8.8  | 6.3–13.2  | 8.3–16.5  |
| 575                         | 3.2–6.5          | 4.0–8.4  | 6.0–12.5  | 8.0–15.6  |
| 600                         | 3.0–6.2          | 3.8–8.0  | 5.7–12.0  | 7.6–15.0  |
| 625                         | 2.8–5.9          | 3.6–7.6  | 5.4–11.5  | 7.2–14.4  |
| 650                         | 2.6–5.6          | 3.4–7.3  | 5.3–11.0  | 6.9–14.0  |

### FRONT PANELS WITHOUT HANDLE (PUSH-TO-OPEN)

Sample measurements table for maximum flap weight when using door catch

| Cabinet height (mm) | Model Häfele Free flap 3.15 | Quantity and model of door catches |            |            |            |            |
|---------------------|-----------------------------|------------------------------------|------------|------------|------------|------------|
|                     |                             | 1 x type 1                         | 1 x type 2 | 1 x type 3 | 2 x type 2 | 2 x type 3 |
|                     |                             | Flap weight (kg)                   |            |            |            |            |
| 350                 | D                           | –                                  | 5.2–8.1    | 8.1–11.0   | –          | –          |
|                     | E                           | –                                  | –          | 6.7–11.8   | 11.8–14.3  | –          |
|                     | –                           | –                                  | –          | –          | 10.1–17.9  | 17.9–21.4  |
|                     | G                           | –                                  | –          | –          | 13.5–18.1  | 18.1–27.3  |
| 400                 | D                           | –                                  | 4.7–9.0    | 9.0–9.6    | –          | –          |
|                     | E                           | –                                  | 5.9–7.9    | 7.9–11.6   | 11.6–12.4  | –          |
|                     | F                           | –                                  | –          | 8.9–10.7   | 10.7–17.2  | 17.2–18.6  |
|                     | G                           | –                                  | –          | 11.8–12.3  | 12.3–17.9  | 17.9–23.3  |
| 450                 | D                           | 4.1–5.0                            | 5.0–8.4    | –          | –          | –          |
|                     | E                           | –                                  | 5.2–7.9    | 7.9–10.9   | –          | –          |
|                     | F                           | –                                  | –          | 7.8–10.2   | 10.2–16.3  | –          |
|                     | G                           | –                                  | –          | 10.4–10.8  | 10.8–16.7  | 16.7–20.5  |
| 500                 | D                           | 3.7–4.9                            | 4.9–7.5    | –          | –          | –          |
|                     | E                           | –                                  | 4.7–7.8    | 7.8–9.7    | –          | –          |
|                     | F                           | –                                  | –          | 7.0–10.0   | 10.0–14.6  | –          |
|                     | G                           | –                                  | –          | 9.2–10.7   | 10.7–16.0  | 16.0–18.3  |
| 550                 | D                           | 3.3–4.9                            | 4.9–6.8    | –          | –          | –          |
|                     | E                           | 4.2–4.5                            | 4.5–7.5    | 7.5–8.8    | –          | –          |
|                     | F                           | –                                  | 6.3–6.8    | 6.8–9.7    | 9.7–13.2   | –          |
|                     | G                           | –                                  | –          | 8.3–10.4   | 10.4–15.3  | 15.3–16.5  |
| 600                 | D                           | 3.0–4.7                            | 4.7–6.2    | –          | –          | –          |
|                     | E                           | 3.8–4.2                            | 4.2–7.2    | 7.2–8.0    | –          | –          |
|                     | F                           | –                                  | 5.7–6.7    | 6.7–9.2    | 9.2–12.0   | –          |
|                     | G                           | –                                  | –          | 7.6–10.2   | 10.2–15.0  | –          |
| 650                 | D                           | 2.6–4.1                            | 4.1–5.6    | –          | –          | –          |
|                     | E                           | –                                  | 3.4–6.4    | 6.4–7.3    | –          | –          |
|                     | F                           | –                                  | –          | 5.3–8.4    | 8.4–11.0   | –          |
|                     | G                           | –                                  | –          | 6.9–10.5   | 10.5–14.0  | –          |



#### Ordering example:

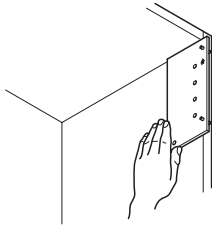
It is recommended that when ordering unit for cabinet height 550 mm, flap weight 16 kg:  
1 Häfele Free flap 3.15 set, model G and 2 Door catches, type 3



#### Recommended products:

- > Push catches ..... 23
- > Drilling jigs ..... 23

## FREE FLAP 1.7/FREE FLAP 3.15 DRILLING JIG

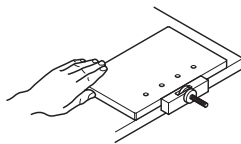


**Cat. No.**

372.91.023

Packing: 1 piece

## FOR FRONT FIXING BRACKETS



- > Area of application: For pilot drilling the front panel for mounting screw-on brackets
- > Material: Acrylic glass
- > Suitable for: Free flap 1.7, Free flap 3.15, Free fold-S, Free up, Free swing

**Cat. No.**

372.64.893

Packing: 1 piece



### Note:

Drilling pattern, see installation instructions of the fitting.  
In order to position the drilling jig correctly, mark the first drill hole according to the required door overlay. Door overlay can be adjusted.

## SELF CENTERING DRILL BIT



- > Area of application: For drilling jigs for Free flap fittings
- > Material: Steel
- > Version: With drill bit Ø5 mm, drilling depth adjustable

**Cat. No.**

001.25.792

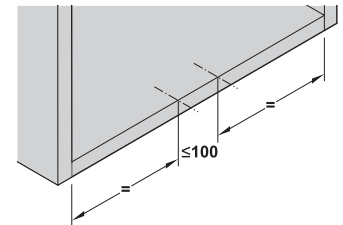
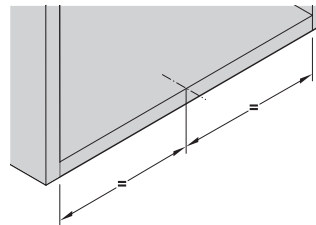
Packing: 1 piece

## PUSH DOOR CATCHES



Positioning with 1 door catch

Positioning with 2 door catches



### Side space

Colour code on underside of housing for differentiation of model type 1 (green), type 2 (yellow) and type 3 (blue)



- > Area of application: For front panels without handles, with Free flap 1.7 and 3.15 flap fitting, up to a width of max. 1200 mm
- > Material: Plastic, Grey RAL 7004
- > Version: With rubber buffer
- > Installation: For mounting in drilled hole Ø10 mm or screw fixing into 32/37 mm series drilled holes
- > Adjustment facility: Front gap +4 mm
- > Release dist. (mm): Approx. 2

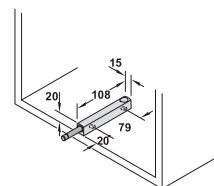
## FOR MOUNTING IN DRILLED HOLE Ø10 MM



| Model  | Colour code | Shear force (N) | Cat. No.   |
|--------|-------------|-----------------|------------|
| Type 1 | Green       | 17–23           | 372.91.470 |
| Type 2 | Yellow      | 22–34           | 372.91.471 |
| Type 3 | Blue        | 26–48           | 372.91.472 |

Packing: 1 or 10 pieces

## SURFACE-MOUNTED HOUSING



| Finish          | Cat. No.   |
|-----------------|------------|
| Grey (pictured) | 372.91.479 |
| Anthracite      | 372.91.579 |

Packing: 1 or 10 pieces

# FREE FOLD

## MINIMAL SPACE REQUIREMENT.

Ideal for flaps with higher fronts. Less space required in the room when opening, and little space required above. The handle is reachable at all times.

- > Minimal space required inside the room
- > For cabinet depths of 288 mm and above
- > For flaps up to 1,040 mm in height and weighing up to 12.3 kg or up to 590 mm in height and weighing up to 23.3 kg
- > Flap front panel material combinations possible





# HÄFELE FREE FOLD



## Note:

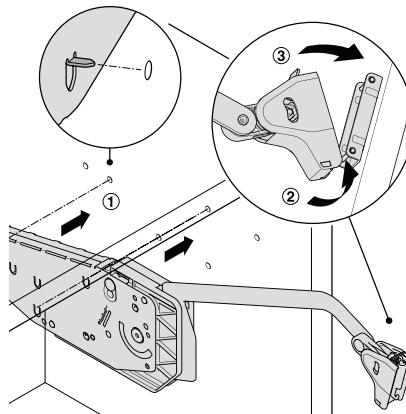
- Even high front panels can be lifted up in a space-saving way
- Less space required in the room when opening
- The handle is reachable at all times
- Pleasant operating feeling even with heavy flaps
- Stylish and compact design
- Safety stop
- For use in combination with standard 110° concealed hinges
- Minimum opening resistance, multi-position stop function and integrated soft opening and soft closing mechanism for extremely pleasant operating feeling
- Rational and quick installation thanks to pins, pre-mounted Euro screws and quick fixing system of the front panel

## HIGHEST OPERATING CONVENIENCE



- Minimum opening resistance
- Flap locks in any position (multi-position stop)
- Smooth, soft closing movement
- Soft opening and soft closing mechanisms

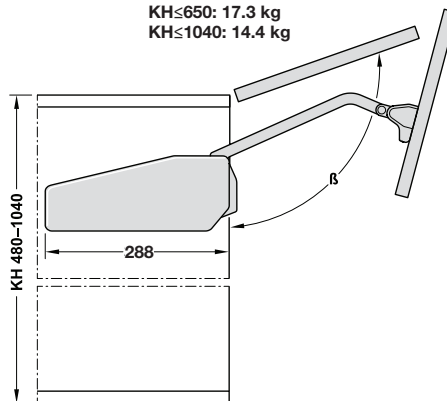
## QUICK FIXING SYSTEM



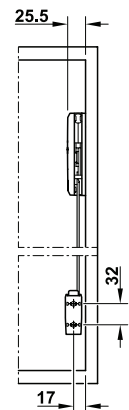
- ① Plug fitting onto pre-drilled side panel, tighten Euro screws that were pre-mounted in the factory
- ② Attach top half of front panel, thread arm of fitting into front fixing bracket of lower half of front panel.

## SPACE REQUIREMENT

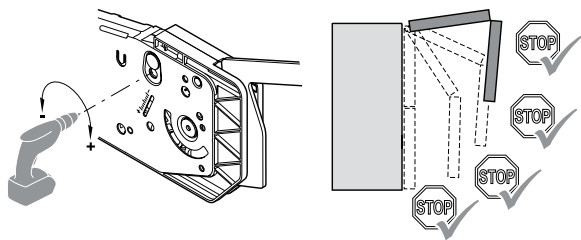
KH≤650: 17.3 kg  
KH≤1040: 14.4 kg



## SIDE SPACE REQUIREMENT

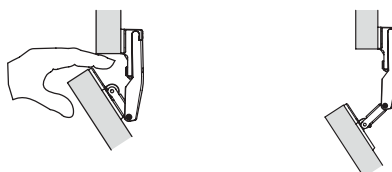


## POWER ADJUSTMENT OF FITTING



Insert PZ2 drive all the way into the opening.  
Set the cordless screwdriver on low speed torque.  
Ensure the same power adjustment on both sides (left and right).

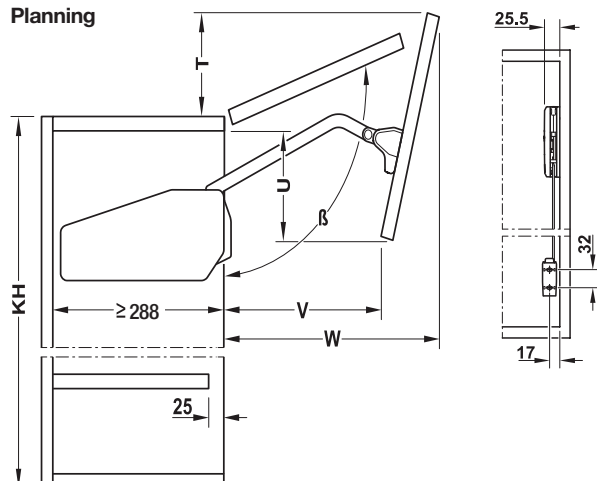
## FINGER PROTECTION FUNCTION



The hinge comes apart when fingers get trapped unintentionally in the gap of the flap.

**HÄFELE FREE FOLD BI-FOLDING FLAP FITTING**

For 2-piece flaps with division 1:1

**Planning**

| Cabinet height KH (mm) | β (°)    | T (mm)  | U (mm)  | V (mm)  | W (mm)  |
|------------------------|----------|---------|---------|---------|---------|
| 480-530                | ~107-96  | 100-37  | 100-155 | 203-186 | 328-370 |
| 520-590                | ~107-93  | 106-23  | 112-184 | 213-190 | 347-401 |
| 580-650                | ~108-95  | 119-40  | 126-197 | 227-207 | 375-430 |
| 650-730                | ~107-94  | 124-38  | 147-224 | 238-215 | 411-470 |
| 710-790                | ~108-95  | 136-46  | 161-233 | 250-219 | 439-500 |
| 770-840                | ~108-95  | 146-43  | 179-223 | 267-200 | 466-527 |
| 840-910                | ~108-98  | 154-70  | 195-248 | 272-231 | 502-559 |
| 910-970                | ~107-98  | 160-78  | 214-246 | 282-225 | 536-588 |
| 960-1010               | ~107-100 | 170-99  | 228-251 | 295-240 | 560-605 |
| 1000-1040              | ~107-102 | 177-120 | 239-256 | 306-256 | 578-616 |

- > Material: Cover cap: Plastic, Fitting: Steel
- > Finish/colour: Cover caps: White or Anthracite
- > Adjustment facility: height/side/depth of top panel (via concealed hinge) and lower panel (via connecting hinge), holding power/centre pull (via fitting)

| Cabinet height (mm) | Front weight (kg) | Model | White      | Anthracite |
|---------------------|-------------------|-------|------------|------------|
| 480-530             | 2.6-4.9           | C1FS  | 372.37.710 | 372.37.300 |
|                     | 4.9-10.2          | C3FS  | 372.37.712 | 372.37.301 |
|                     | 9.3-15.9          | C4FS  | 372.37.713 | 372.37.302 |
| 520-590             | 2.4-4.8           | D1FS  | 372.37.720 | 372.37.303 |
|                     | 4.8-9.0           | D3FS  | 372.37.722 | 372.37.304 |
|                     | 7.8-15.2          | D4FS  | 372.37.723 | 372.37.305 |
| 580-650             | 2.1-4.0           | E1FS  | 372.37.730 | 372.37.306 |
|                     | 4.0-8.5           | E3FS  | 372.37.732 | 372.37.307 |
|                     | 6.8-12.5          | E4FS  | 372.37.733 | 372.37.308 |
|                     | 10.5-17.3         | E5FS  | 372.37.734 | 372.37.309 |
| 650-730             | 3.7-7.4           | F3FS  | 372.37.742 | 372.37.310 |
|                     | 7.0-11.8          | F4FS  | 372.37.743 | 372.37.311 |
|                     | 10.2-17.2         | F5FS  | 372.37.744 | 372.37.312 |
| 710-790             | 3.6-6.2           | G3FS  | 372.37.752 | 372.37.313 |
|                     | 6.1-10.8          | G4FS  | 372.37.753 | 372.37.314 |
|                     | 8.5-14.4          | G5FS  | 372.37.754 | 372.37.315 |
| 770-840             | 5.1-9.8           | H4FS  | 372.37.763 | 372.37.316 |
|                     | 7.5-14.1          | H5FS  | 372.37.764 | 372.37.317 |

| Cabinet height (mm) | Front weight (kg) | Model | White      | Anthracite |
|---------------------|-------------------|-------|------------|------------|
| 840-910             | 4.7-8.9           | I4FS  | 372.37.773 | 372.37.318 |
|                     | 6.9-12.2          | I5FS  | 372.37.774 | 372.37.319 |
| 910-970             | 4.7-8.0           | J4FS  | 372.37.783 | 372.37.320 |
|                     | 6.4-11.5          | J5FS  | 372.37.784 | 372.37.321 |
| 960-1010            | 4.6-8.3           | K4FS  | 372.37.793 | 372.37.322 |
|                     | 6.5-10.7          | K5FS  | 372.37.794 | 372.37.323 |
| 1000-1040           | 5.7-10.1          | L5FS  | 372.37.799 | 372.37.324 |

**Supplied with:**

- > 1 Free fold fitting set (left and right)
- > 2 Front fixing brackets
- > 1 Installation instructions
- > 1 Paper drilling template
- > 1 Cover cap set (white or anthracite)
- > 2 Connecting hinges, for flaps up to 10 kgs, or
- > 3 Connecting hinges, for flaps above 10 kgs

**Order Reference:**

Concealed hinges for connecting the flap with the cabinet, must be order separately. Refer to page 43.

**ADDITIONAL CONNECTING HINGES**

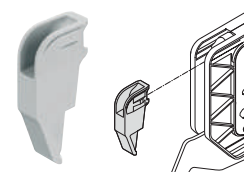
- > Features: With finger protection function
- > Material: Zinc alloy, Nickel plated
- > Adjustment facility: 3-dimensional  
Side: ±2 mm  
Gap: -2 to +1 mm  
Depth: ±1.5 mm

| Cat. No.   |
|------------|
| 372.64.796 |

Packing: 1 or 10 pieces

**Order Reference:**

Fixing screws must be ordered separately.

**OPENING ANGLE RESTRAINT**

- > Area of application: For restricting the opening angle of the pair of doors to under 90°
- > Installation: For push fitting
- > Material: Plastic, Grey

| Cat. No.   |
|------------|
| 372.37.060 |

Packing: 1 or 5 sets

**Recommended products:**

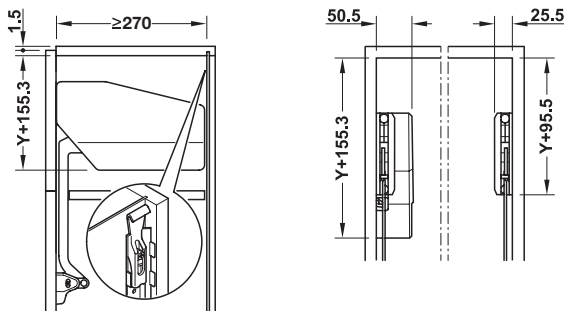
- > E-drive for Free Fold ..... 27
- > Drilling jigs ..... 27

## HÄFELE FREE FOLD E-DRIVE - COMPLETE SET

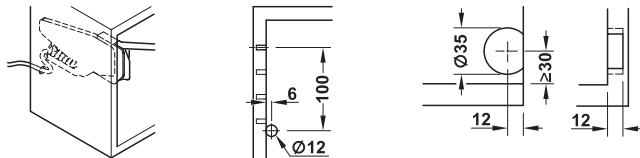
For large, two-piece flaps



### Planning and space requirement



### Push button sender and cable guide installation



For other planning dimensions and dimensions Y see installation instructions

- > Material: Cover cap: Plastic, Fitting: Zinc alloy
- > Finish/colour: Cover cap: White or Anthracite
- > Cabinet height (mm): 480–1,040
- > Flap width (mm): ≤1200 mm (≥1200 mm = 2 sets)
- > Input voltage: 100–240 V AC/ 50–60 Hz/ 1.3 A
- > Nominal voltage: 24 V DC/ 2.5 A
- > Output voltage: For interior cabinet lighting: 24V DC/ 1.2 A
- > Stand-by power (W): 1
- > Radio frequency: 2.4 GHz
- > Protection class: II

| Description                    | White      | Anthracite |
|--------------------------------|------------|------------|
| Free Fold e-drive complete set | 372.29.704 | 372.29.705 |

Packing: 1 set



#### Supplied with:

- > 1 E-drive (left hand mounted only)
- > 1 Set of replacement cover caps
- > 1 Driver and mains lead (2000 mm)
- > 2 Push button senders
- > 1 Set of installation and operating instructions
- > 1 Paper drilling template for side panel drilling pattern
- > 1 Plastic drilling jig for push button sender



#### Order Reference:

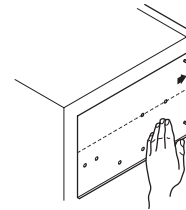
Concealed hinges for connecting the flap with the cabinet must be order separately.



#### Recommended products:

- > Concealed hinges ..... 43

## FREE FOLD DRILLING JIG



| Version   | Cat. No.   |
|-----------|------------|
| Free Fold | 372.37.050 |

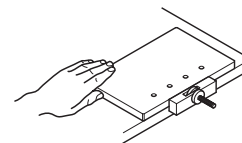
Packing: 1 piece



#### Note:

Drilling pattern, see installation instructions of the fitting. The drilling jig is positioned with the reference line according to the variable dim. Y that is to be calculated.

## FOR FRONT FIXING BRACKETS



- > Area of application: For pilot drilling the front panel for mounting screw-on brackets
- > Material: Acrylic glass
- > Suitable for: Free flap 1.7, Free flap 3.15, Free fold-S, Free up, Free swing

|  | Cat. No.   |
|--|------------|
|  | 372.64.893 |

Packing: 1 piece



#### Note:

Drilling pattern, see installation instructions of the fitting. In order to position the drilling jig correctly, mark the first drill hole according to the required door overlay. Door overlay can be adjusted.

## SELF CENTERING DRILL BIT



- > Area of application: For drilling jigs for Free flap fittings
- > Material: Steel
- > Version: With drill bit Ø5 mm, drilling depth adjustable

|  | Cat. No.   |
|--|------------|
|  | 001.25.792 |

Packing: 1 piece



## FREE UP

### MAXIMUM ACCESS TO CABINET.

Hardly any space required in the room towards the front. Can be used in conjunction with upper-mounted cabinets or front panels. Creates practical storage compartments in tall cabinets, e.g. for electrical equipment. Cabinet contents are easy to access.

- > Hardly any space required in the room towards the front
- > Can be used in combination with upper-mounted cabinets or front panels
- > For cabinet depths from 277 mm and above
- > For flaps up to 600 mm in height and weighing up to 14.6 kg or up to 420 mm in height and up to 19.6 kg



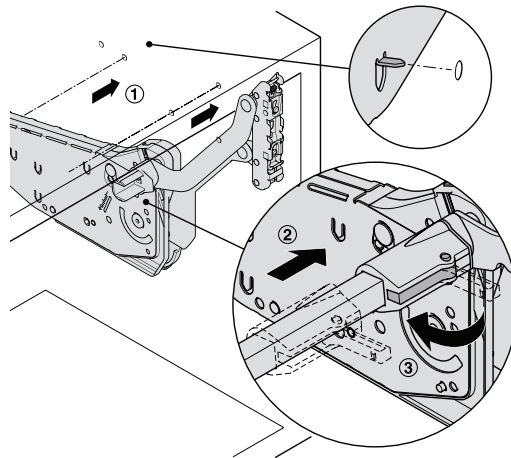
## HÄFELE FREE UP



### Note:

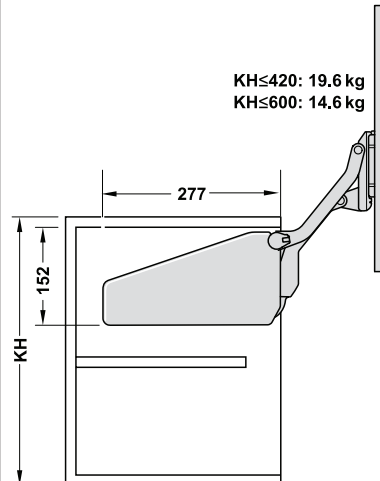
- > Ideal for cabinets with front panels
- > Hardly any space required in the room towards the front
- > Creates practical "niches" in tall cabinets, e.g. for electrical equipment
- > Cabinet contents are extremely easy to access
- > Excellent side stability
- > Minimum opening resistance, multi-position stop function and integrated soft opening and soft closing mechanisms for extremely pleasant operating feeling
- > Rational and quick installation thanks to pins, pre-mounted Euro screws and quick fixing system of the front panel and cross bar
- > Stylish and compact design

### QUICK FIXING SYSTEM

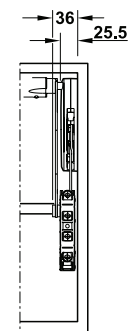


- ① Plug fit fitting onto pre-drilled side panel, tighten Euro screws that were pre-mounted in the factory.
- ② - ③ Insert cross bar and secure with the sleeves
- ④ Surface mount front panel and engage

### MAXIMUM FLEXIBILITY



### SIDE SPACE REQUIREMENT

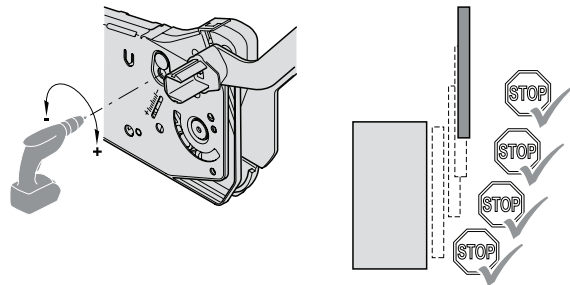


### HIGHEST OPERATING CONVENIENCE



- > Minimum opening resistance
- > Flap locks in any position (multi-position stop)
- > Smooth, soft closing movement
- > Soft opening and soft closing mechanisms

### POWER ADJUSTMENT OF FITTING

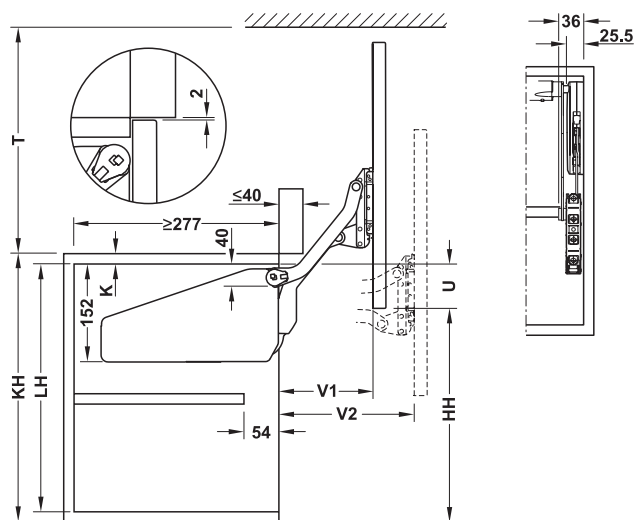


Insert PZ2 drive all the way into the opening.  
Set the cordless screwdriver on low speed torque.  
Ensure the same power adjustment on both sides (left and right).



**HÄFELE FREE UP LIFT-UP FRONT FITTING**

For one-piece flaps

**Planning**

$$U = KH - HH - K$$

| Cabinet height KH (mm) | LH (mm) | HH (mm) | T (mm) | V1 (mm) | V2 (mm) |
|------------------------|---------|---------|--------|---------|---------|
| 320-360                | ≥280    | 278     | ≥281   | 128     | 177     |
| 345-420                | ≥308    | 328     | ≥333   | 146     | 205     |
| 380-500                | ≥343    | 390     | ≥393   | 168     | 240     |
| 430-600                | ≥388    | 470     | ≥473   | 196     | 284     |

- > Material: Cover cap: Plastic, Fitting: Steel
- > Finish/colour: Cover caps: White or Anthracite
- > Adjustment facility: Height: ±1.5 mm  
Side: ±1.5 mm  
Tilt: ±1.5 mm  
holding power

| Cabinet height (mm) | Flap weight (kg) | Model | White      | Anthracite |
|---------------------|------------------|-------|------------|------------|
| 320-360             | 3.0-5.7          | O1us  | 372.33.700 | 372.33.300 |
|                     | 4.8-9.3          | O2us  | 372.33.701 | 372.33.301 |
|                     | 8.7-16.5         | O3us  | 372.33.702 | 372.33.302 |
| 345-420             | 2.4-4.8          | P1us  | 372.33.710 | 372.33.303 |
|                     | 4.1-8.0          | P2us  | 372.33.711 | 372.33.304 |
|                     | 7.4-14.0         | P3us  | 372.33.712 | 372.33.305 |
|                     | 11.0-19.6        | P4us  | 372.33.713 | 372.33.306 |
| 380-500             | 2.0-3.8          | Q1us  | 372.33.720 | 372.33.307 |
|                     | 3.4-6.7          | Q2us  | 372.33.721 | 372.33.308 |
|                     | 6.3-11.8         | Q3us  | 372.33.722 | 372.33.309 |
|                     | 9.3-17.4         | Q4us  | 372.33.723 | 372.33.310 |
| 430-600             | 1.6-3.3          | R1us  | 372.33.730 | 372.33.311 |
|                     | 2.6-5.5          | R2us  | 372.33.731 | 372.33.312 |
|                     | 5.0-9.7          | R3us  | 372.33.732 | 372.33.313 |
|                     | 7.4-14.6         | R4us  | 372.33.733 | 372.33.314 |

Packing: 1 set

**Supplied with:**

- > 1 Free up fitting set (left and right)
- > 1 Crossbar to suit 1200 mm cabinet width (cuttable)
- > 2 Front fixing brackets
- > 1 Installation instructions
- > 1 Paper drilling template
- > 1 Cover cap set (white or anthracite)

**HÄFELE FREE UP PUSH LIFT-UP FRONT FITTING**

For one-piece without handles

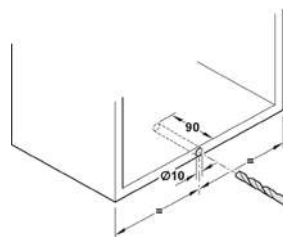
- > Material: Cover cap: Plastic, Fitting: Steel
- > Finish/colour: Cover caps: White or Anthracite
- > Adjustment facility: Height adjustment: ±1.5 mm  
Side adjustment: ±1.5 mm  
Tilt angle: ±1.5°  
holding power adjustment, release distance of push catch
- > Flap width: <1200 mm

| Cabinet height H (mm) | Flap weight (kg) | Model    | White      | Anthracite |
|-----------------------|------------------|----------|------------|------------|
| 320-360               | 3.0-5.7          | O1us pto | 372.33.740 | 372.33.340 |
|                       | 4.8-9.3          | O2us pto | 372.33.741 | 372.33.341 |
|                       | 8.7-16.5         | O3us pto | 372.33.742 | 372.33.342 |
| 345-420               | 2.4-4.8          | P1us pto | 372.33.750 | 372.33.350 |
|                       | 4.1-8.0          | P2us pto | 372.33.751 | 372.33.351 |
|                       | 7.4-14.0         | P3us pto | 372.33.752 | 372.33.352 |
|                       | 11.0-19.6        | P4us pto | 372.33.753 | 372.33.353 |
| 380-500               | 2.0-3.8          | Q1us pto | 372.33.760 | 372.33.360 |
|                       | 3.4-6.7          | Q2us pto | 372.33.761 | 372.33.361 |
|                       | 6.3-11.8         | Q3us pto | 372.33.762 | 372.33.362 |
|                       | 9.3-17.4         | Q4us pto | 372.33.763 | 372.33.363 |
| 430-600               | 1.6-3.3          | R1us pto | 372.33.770 | 372.33.370 |
|                       | 2.6-5.5          | R2us pto | 372.33.771 | 372.33.371 |
|                       | 5.0-9.7          | R3us pto | 372.33.772 | 372.33.372 |
|                       | 7.4-14.6         | R4us pto | 372.33.773 | 372.33.373 |

Packing: 1 set

**Supplied with:**

- > 1 Free up fitting set (left and right)
- > 1 Crossbar to suit 1200 mm cabinet width (cuttable)
- > 2 Front fixing brackets
- > 1 Installation instructions
- > 1 Paper drilling template
- > 1 Cover cap set (white or anthracite)
- > 1 push catch

**Push catch Installation****Recommended products:**

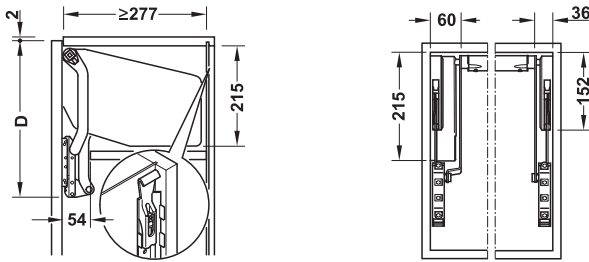
- > E-drive for Free Up..... 31
- > Drilling jigs ..... 31

## HÄFELE FREE UP E-DRIVE - COMPLETE SET

For one-piece flaps

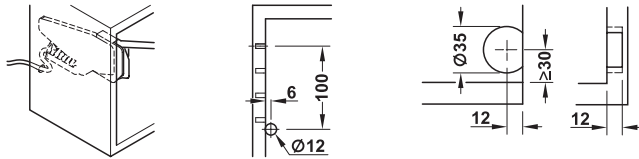


### Planning and space requirement



For other planning dimensions see installation instructions

### Push button sender and cable guide installation



- > Material: Cover cap: Plastic, Fitting: Zinc alloy
- > Finish/colour: Cover cap: White or Anthracite
- > Cabinet height (mm): 320–600
- > Flap width (mm): ≤1200 mm (≥1200 mm = 2 sets)
- > Input voltage: 100–240 V AC/ 50–60 Hz/ 1.3 A
- > Nominal voltage: 24 V DC/ 2.5 A
- > Output voltage: For interior cabinet lighting: 24V DC/ 1.2 A
- > Stand-by power (W): 1
- > Radio frequency: 2.4 GHz
- > Protection class: II

| Cabinet height (mm) | Model | White      | Anthracite |
|---------------------|-------|------------|------------|
| 320-360             | O     | 372.29.706 | 372.29.710 |
| 345-420             | P     | 372.29.707 | 372.29.711 |
| 380-500             | Q     | 372.29.708 | 372.29.712 |
| 430-600             | R     | 372.29.709 | 372.29.713 |

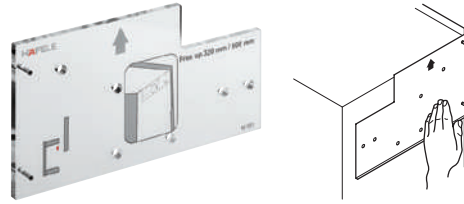
Packing: 1 set



#### Supplied with:

- > 1 E-drive (left hand mounted only)
- > 1 Set of replacement cover caps
- > 1 Driver and mains lead (2000 mm)
- > 2 Push button senders
- > 1 Set of installation and operating instructions
- > 1 Paper drilling template for side panel drilling pattern
- > 1 Plastic drilling jig for push button sender

## FREE UP DRILLING JIG



Cat. No.

372.33.050

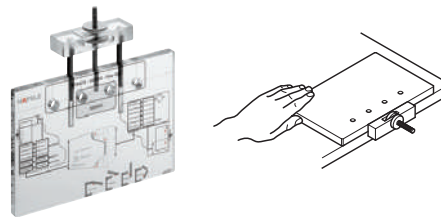
Packing: 1 piece



#### Note:

Drilling pattern, see installation instructions of the fitting.  
The drilling jig is positioned directly in the top left or top right cabinet corner.

## FOR FRONT FIXING BRACKETS



- > Area of application: For pilot drilling the front panel for mounting screw-on brackets
- > Material: Acrylic glass
- > Suitable for: Free flap 1.7, Free flap 3.15, Free fold-S, Free up, Free swing

Cat. No.

372.64.893

Packing: 1 piece



#### Note:

Drilling pattern, see installation instructions of the fitting.  
In order to position the drilling jig correctly, mark the first drill hole according to the required door overlay. Door overlay can be adjusted.

## SELF CENTERING DRILL BIT



- > Area of application: For drilling jigs for Free flap fittings
- > Material: Steel
- > Version: With drill bit Ø5 mm, drilling depth adjustable

Cat. No.

001.25.792

Packing: 1 piece



## FREE SWING

ELEGANT MOTION IN THE ROOM.

Elegant motion geometry. Swivels around cornice profiles and top-mounted lights. Perfectly suited for large flaps. Cabinet contents are easy to access.

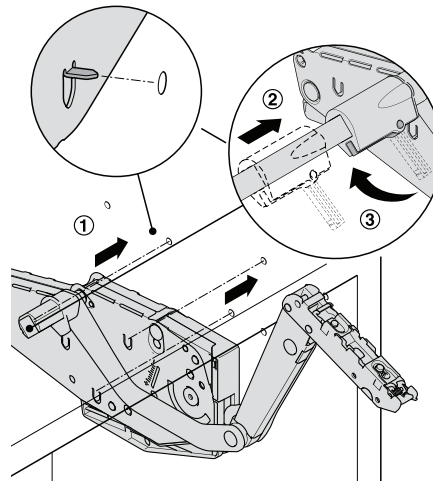
- > Swivels around cornice profiles and top-mounted lights
- > Extremely suitable for large flaps
- > Cabinet contents are easy to access
- > For cabinet depths from 273 mm and above
- > For flaps up to 800 mm in height and weighing up to 15.3 kg, or up to 670 mm in height and weighing up to 17.1 kg

## HÄFELE FREE SWING


**Note:**

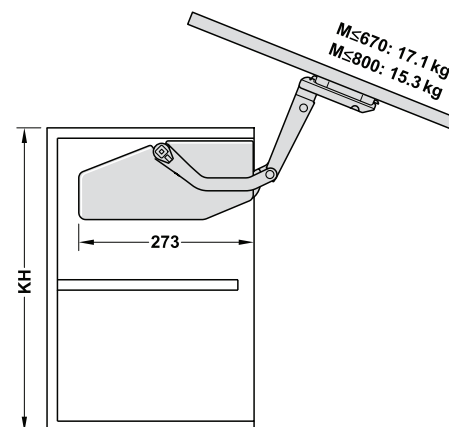
- > Ideal for large flaps
- > Swivels around cornice profiles and surface mounted lights
- > Full access to the cabinet contents
- > Stylish and compact design
- > Minimum opening resistance, multi-position stop function and integrated soft opening and soft closing mechanisms for extremely pleasant operating feeling
- > Rational and quick installation thanks to pins, pre-mounted Euro screws and quick fixing system of the front panel and cross bar.

### QUICK FIXING SYSTEM

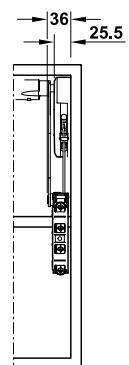


- ① Plug fit fitting onto pre-drilled side panel, tighten Euro screws that were pre-mounted in the factory.
- ②-③ Insert cross bar and secure with the sleeves
- ④ Surface mount front panel and engage

### MAXIMUM FLEXIBILITY



### SIDE SPACE REQUIREMENT

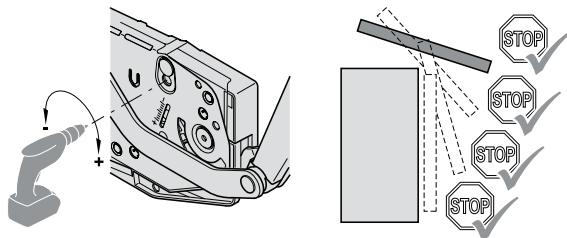


### HIGHEST OPERATING CONVENIENCE



- > Minimum opening resistance
- > Flap locks in any position (multi-position stop)
- > Smooth, soft closing movement
- > Soft opening and soft closing mechanisms

### POWER ADJUSTMENT OF FITTING

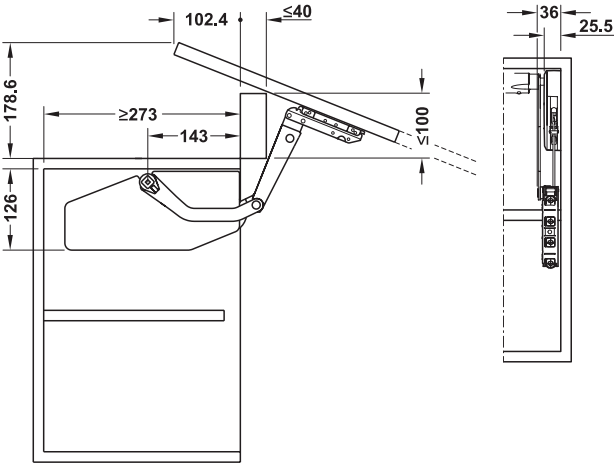


Insert PZ2 drive all the way into the opening.  
Set the cordless screwdriver on low speed torque.  
Ensure the same power adjustment on both sides (left and right).



HÄFELE FREE SWING LIFT-UP FLAP FITTING  
For one-piece flaps

Planning



| Cabinet height (mm) | Flap weight (kg) |          |          |
|---------------------|------------------|----------|----------|
| Model               | S1sw             | S4sw     | S7sw     |
| 370                 | 1.8-4.0          | 3.4-6.5  | 5.2-10.3 |
| 400                 | 1.8-3.9          | 3.3-6.3  | 5.0-10.0 |
| 450                 | 1.8-3.7          | 3.2-6.1  | 4.8-9.4  |
| 500                 | 1.8-3.5          | 3.0-5.8  | 4.5-8.9  |
| Model               | S2sw             | S5sw     | S8sw     |
| 500                 | 2.5-5.9          | 5.0-10.0 | 8.2-15.9 |
| 550                 | 2.5-5.6          | 4.8-9.6  | 7.8-15.2 |
| 600                 | 2.5-5.3          | 4.7-9.3  | 7.5-14.5 |
| 670                 | 2.5-4.8          | 4.5-8.8  | 7.0-13.5 |
| Model               | S3sw             | S6sw     | S9sw     |
| 670                 | 3.2-6.5          | 5.7-11.3 | 8.5-17.1 |
| 700                 | 3.1-6.3          | 5.6-11.1 | 8.4-16.7 |
| 750                 | 3.0-6.0          | 5.4-10.7 | 8.2-16.0 |
| 800                 | 2.9-5.7          | 5.3-10.3 | 8.0-15.3 |

|                        |   |
|------------------------|---|
| > Material:            | Cover cap: Plastic, Fitting: Steel  |
| > Finish/colour:       | Cover caps: White or Anthracite   |
| > Adjustment facility: | Height adjustment: ±1.5 mm<br>Side adjustment: ±1.5 mm<br>Tilt angle: ±1.5°<br>holding power adjustment, release distance of push catch |

| Model | White      | Anthracite |
|-------|------------|------------|
| S1sw  | 372.34.700 | 372.34.300 |
| S2sw  | 372.34.710 | 372.34.303 |
| S3sw  | 372.34.720 | 372.34.306 |
| S4sw  | 372.34.701 | 372.34.301 |
| S5sw  | 372.34.711 | 372.34.304 |
| S6sw  | 372.34.721 | 372.34.307 |
| S7sw  | 372.34.702 | 372.34.302 |
| S8sw  | 372.34.712 | 372.34.305 |
| S9sw  | 372.34.722 | 372.34.308 |

Packing: 1 set



Supplied with:

- > 1 Free swing fitting set (left and right)
- > 1 Crossbar to suit 1200 mm cabinet width (cuttable)
- > 2 Front fixing brackets
- > 1 Installation instructions
- > 1 Paper drilling template
- > 1 Cover cap set (white or anthracite)

HÄFELE FREE SWING PUSH LIFT-UP FLAP FITTING  
For one-piece flaps

|                        |   |
|------------------------|---|
| > Material:            | Cover cap: Plastic, Fitting: Steel  |
| > Finish/colour:       | Cover caps: White or Anthracite   |
| > Adjustment facility: | Height adjustment: ±1.5 mm<br>Side adjustment: ±1.5 mm<br>Tilt angle: ±1.5°<br>holding power adjustment, release distance of push catch |
| > Flap width:          | <1200 mm  |

| Model    | White      | Anthracite |
|----------|------------|------------|
| S1sw pto | 372.34.740 | 372.34.340 |
| S2sw pto | 372.34.741 | 372.34.341 |
| S3sw pto | 372.34.742 | 372.34.342 |
| S4sw pto | 372.34.743 | 372.34.343 |
| S5sw pto | 372.34.744 | 372.34.344 |
| S6sw pto | 372.34.745 | 372.34.345 |
| S7sw pto | 372.34.746 | 372.34.346 |
| S8sw pto | 372.34.747 | 372.34.347 |
| S9sw pto | 372.34.748 | 372.34.348 |

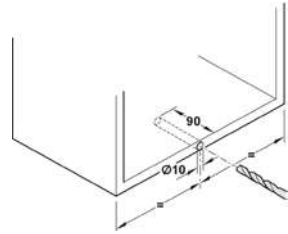
Packing: 1 set



Supplied with:

- > 1 Free swing fitting set (left and right)
- > 1 Crossbar to suit 1200 mm cabinet width (cuttable)
- > 2 Front fixing brackets
- > 1 Installation instructions
- > 1 Paper drilling template
- > 1 Cover cap set (white or anthracite)
- > 1 push catch

Push catch Installation



Recommended products:

- > E-drive for Free Swing ..... 35
- > Drilling jigs ..... 35

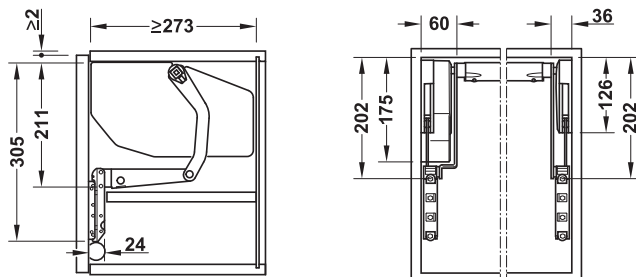


## HÄFELE FREE SWING E-DRIVE - COMPLETE SET

For one-piece flaps made from wood or with aluminium frame

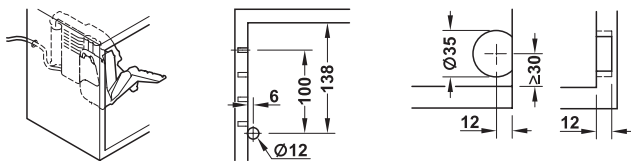


### Planning and space requirement



For other planning dimensions see installation instructions

### Push button sender and cable guide installation



- > Material: Cover cap: Plastic, Fitting: Zinc alloy
- > Finish/colour: Cover cap: White or Anthracite
- > Cabinet height (mm): 370–800
- > Flap width (mm): ≤1200 mm (≥1200 mm = 2 sets)
- > Input voltage: 100–240 V AC/ 50–60 Hz/ 1.3 A
- > Nominal voltage: 24 V DC/ 2.5 A
- > Output voltage: For interior cabinet lighting: 24V DC/ 1.2 A
- > Stand-by power (W): 1
- > Radio frequency: 2.4 GHz
- > Protection class: II

| Description                     | White      | Anthracite |
|---------------------------------|------------|------------|
| Free Swing e-drive complete set | 372.29.714 | 372.29.715 |

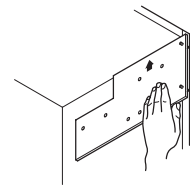
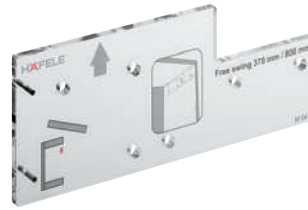
Packing: 1 set



### Supplied with:

- > 1 E-drive (left hand mounted only)
- > 1 Set of replacement cover caps
- > 1 Driver and mains lead (2000 mm)
- > 2 Push button senders
- > 1 Set of installation and operating instructions
- > 1 Paper drilling template for side panel drilling pattern
- > 1 Plastic drilling jig for push button sender

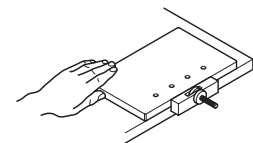
## FREE SWING DRILLING JIG



Cat. No.  
372.34.050

Packing: 1 piece

## FOR FRONT FIXING BRACKETS



- > Area of application: For pilot drilling the front panel for mounting screw-on brackets
- > Material: Acrylic glass
- > Suitable for: Free flap 1.7, Free flap 3.15, Free fold-S, Free up, Free swing

Cat. No.  
372.64.893

Packing: 1 piece



### Note:

Drilling pattern, see installation instructions of the fitting. In order to position the drilling jig correctly, mark the first drill hole according to the required door overlay. Door overlay can be adjusted.

## SELF CENTERING DRILL BIT



- > Area of application: For drilling jigs for Free flap fittings
- > Material: Steel
- > Version: With drill bit Ø5 mm, drilling depth adjustable

Cat. No.  
001.25.792

Packing: 1 piece

# FREE FLAP H 1.5

THE ALL PURPOSE FITTING FOR WALL UNITS.



## Multi-functionality in the application

- > Variable standard product provides versatile functionality for front panels with and without handles: by changing the installation position and combining with additional components, both conventional applications with a handle and push-to-open applicators without a handle can be realised
- > For one-sided or two-sided application (depends on the flap width and weight)
- > Can be used in combination with standard 110° concealed hinges (push hinges for push-to-open applications; dampened hinges for soft closing)

## Attractive diversity of appearance

- > Available as all-plastic version or with metal support arm; housing colour available in white

## Easy handling

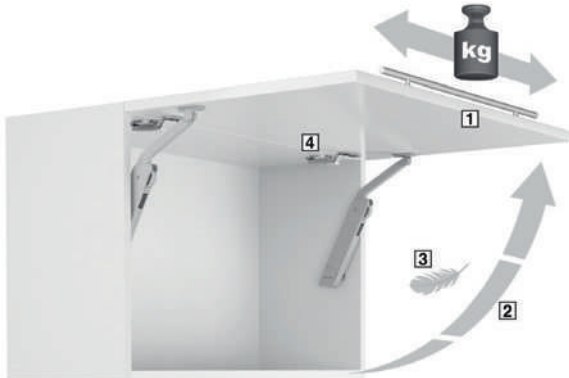
- > Installation is simple, rational and tool-less
- > The holding power can be individually adjusted to suit the respective flap weight and the required function

# HÄFELE FREE FLAP H1.5

## PRODUCT RANGE OVERVIEW

### Häfele Free flap H 1.5

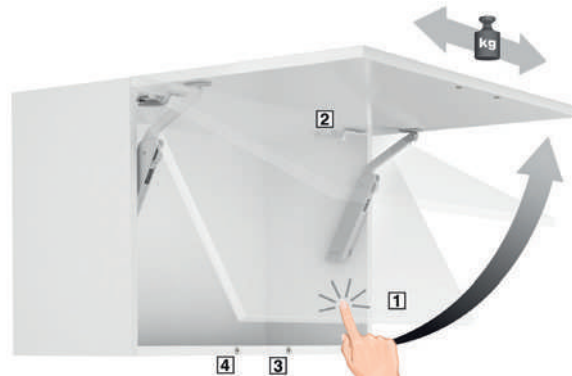
Standard mounting version for power assisted opening of flap



- 1** For front panels with handle.
- 2** Flap locks reliably in any position.
- 3** Reduced amount of manual force required for opening the flap by means of fitting with movement assistance.
- 4** For use in combination with standard concealed hinge 110°; soft closing provided by hinges with integrated soft closing mechanism.

### Häfele Free flap H 1.5 push-to-open

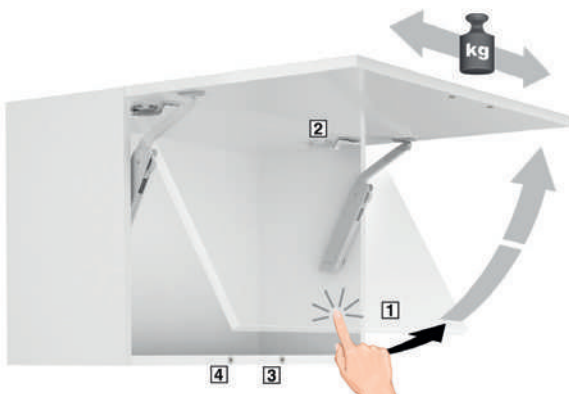
Mounting version for automatic complete opening



- 1** A gentle push on the front opens completely to the end position.
- 2** For use in combination with Salice Push concealed hinges.
- 3** Held closed by magnetic door catch and counterplate on the front panel.
- 4** Additional magnet for holding in closed position (optional).

### Häfele Free flap H 1.5 touch opening

Mounting version for opening the flap slightly, with multi-position stop



- 1** A gentle push on the front opens the flap slightly, it can then be fully opened and closed again by hand. The front is locked reliably in any position.
- 2** For use in combination with Salice Push concealed hinges.
- 3** Held closed by magnetic door catch and counterplate on the front panel.
- 4** Additional magnet for holding in closed position (optional).

# HÄFELE FREE FLAP H1.5



## Attractive diversity of appearance

- > Available as all-plastic version or with metal support arm; housing colour available in white

## Multifunctionally in the application

- > Variable standard product provides versatile functionality for front panels with and without handle: By changing the installation position and combining with additional components, both conventional applications with a handle and push-to-open applications without a handle can be realised
- > For one-sided or two-sided application (depends on the flap width and weight)
- > Can be used in combination with standard 110° concealed hinges (Push hinges for push-to-open applications; hinges with soft closing mechanism)

## Easy handling

- > Installation is simple, rational and without tools
- > The holding power can be individually adjusted to suit the respective flap weight and the required function

## PRODUCT AND COLOUR VERSIONS

All plastic version in white

Plastic housing in white, with metal support arm



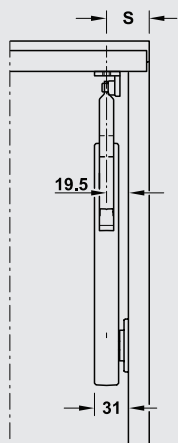
## FINISH

- > White



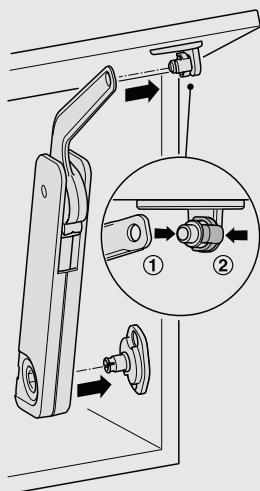
## SIDE SPACE

Side distance  
 $S = \text{door overlay} + 19.5$

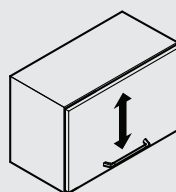


## QUICK FIXING SYSTEM

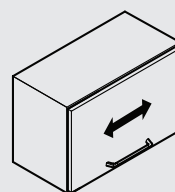
Fitting is simply clipped onto the pre-mounted fixing plates



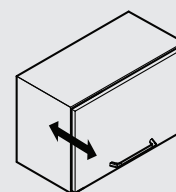
## ADJUSTMENT FACILITY FOR FRONT PANEL



Height adjustment\*



Side adjustment\*

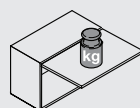


Tilt adjustment\*

\*Dependent on the concealed hinges that are used

## HOLDING POWER ADJUSTMENT

Holding power adjustment with SW10 Allen key



## Note:

Use position 1–8 for adjusting the holding power  
 Use position 9–12 to re-adjust flap (if necessary)



## HÄFELE FREE FLAP H 1.5 COMPLETE SETS

Plastic with metal support arm



- > Material: Housing, mounting bracket, screw-on Bracket and hex key: Plastic  
Support arm: Zinc alloy
- > Finish/colour: Housing and surface mounted parts: White  
Metal support arm: Nickel plated
- > Installation: Lid stay: Without tools,  
Mounting bracket and screw-on bracket: for screw fixing
- > Adjustment facility: Holding power adjustment

| Model | Mounting | White      |
|-------|----------|------------|
| A     | Right    | 372.28.800 |
|       | Left     | 372.28.801 |
| B     | Right    | 372.28.810 |
|       | Left     | 372.28.811 |
| C     | Right    | 372.28.820 |
|       | Left     | 372.28.821 |
| D     | Right    | 372.28.830 |
|       | Left     | 372.28.831 |

Packing: 1 set



### Supplied with:

- > 1 Lid stay
- > 1 Mounting bracket for cabinet
- > 1 Screw-on bracket for flap
- > 1 Hex key, SW10, plastic
- > 1 Set of installation instructions



### Order Reference:

Use two Free Flap H 1.5 fittings from cabinet width of 600 mm and above.



Left hand ① or right hand ② mounting

## HÄFELE FREE FLAP H 1.5 COMPLETE SETS

All plastic version



- > Material: Housing, mounting bracket, screw-on Bracket and hex key: Plastic  
Support arm: Zinc alloy
- > Finish/colour: Housing and surface mounted parts: White  
Metal support arm: Nickel plated
- > Installation: Lid stay: Without tools,  
Mounting bracket and screw-on bracket: for screw fixing
- > Adjustment facility: Holding power adjustment

| Model | Mounting | White      |
|-------|----------|------------|
| A     | Right    | 372.39.800 |
|       | Left     | 372.39.801 |
| B     | Right    | 372.39.810 |
|       | Left     | 372.39.811 |
| C     | Right    | 372.39.820 |
|       | Left     | 372.39.821 |
| D     | Right    | 372.39.830 |
|       | Left     | 372.39.831 |

Packing: 1 set



### Supplied with:

- > 1 Lid stay
- > 1 Mounting bracket for cabinet
- > 1 Screw-on bracket for flap
- > 1 Hex key, SW10, plastic
- > 1 Set of installation instructions



### Order Reference:

Use two Free Flap H 1.5 fittings from cabinet width of 600 mm and above.



### Order Reference:

The model selection of the flap fitting set depends on the cabinet height and flap weight. Refer to page 40-42.



### Recommended products:

- > Concealed hinges ..... 43
- > Push concealed hinges ..... 43

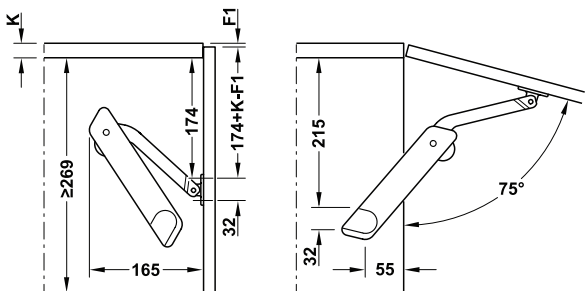


HÄFELE FREE FLAP H 1.5  
Standard mounting version for power assisted opening of flap



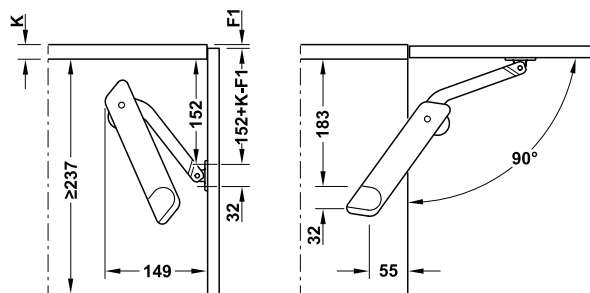
- Note:**
- > The following mounting dimensions and sample measurements tables for this kind of application must be adhered to
  - > Use two Free flap H 1.5 fittings for flap widths from 600 mm and above
  - > The weight specification applies to one Free Flap H 1.5 fitting, flap weight values double when using two Free Flap H 1.5 fittings.
  - > For use in combination with standard 110° concealed hinges with or without integrated soft closing mechanism

OPENING ANGLE 75°



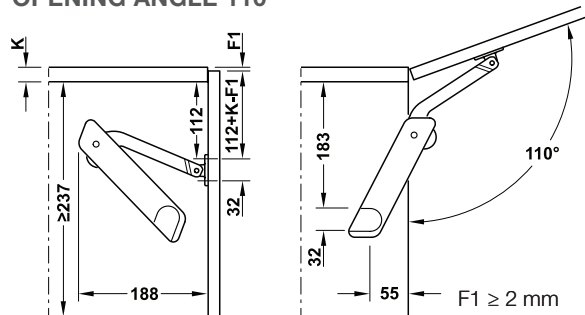
| Cabinet height (mm) | Flap weight (kg) |         |          |
|---------------------|------------------|---------|----------|
|                     | Model A          | Model B | Model D  |
| 350                 | 2.6–4.2          | 3.8–6.5 | 6.2–10.9 |
| 400                 | 2.3–3.3          | 3.0–5.8 | 5.6–10.2 |
| 450                 | 2.2–3.1          | 2.7–4.6 | 5.5–9.7  |
| 500                 | 1.7–2.8          | 2.3–4.6 | 4.6–8.5  |
| 550                 | 1.6–2.6          | 2.2–4.2 | 4.1–6.6  |
| 600                 | 1.2–2.3          | 2.1–3.9 | 3.9–6.0  |

OPENING ANGLE 90°



| Cabinet height (mm) | Flap weight (kg) |         |          |
|---------------------|------------------|---------|----------|
|                     | Model A          | Model B | Model D  |
| 275                 | 2.8–3.8          | 3.5–6.0 | 5.8–10.5 |
| 300                 | 2.2–3.4          | 3.3–5.7 | 5.2–9.0  |
| 350                 | 2.1–2.9          | 2.7–4.9 | 4.8–8.0  |
| 400                 | 1.6–2.3          | 2.3–4.6 | 4.3–7.9  |
| 450                 | 1.3–2.2          | 2.0–3.8 | 3.8–6.3  |
| 500                 | 1.2–2.0          | 1.7–3.4 | 3.4–6.0  |
| 550                 | 1.2–1.9          | 1.7–3.0 | 3.0–5.1  |
| 600                 | 0.9–1.6          | 1.6–3.0 | 3.0–4.7  |

OPENING ANGLE 110°



| Cabinet height (mm) | Flap weight (kg) |         |         |
|---------------------|------------------|---------|---------|
|                     | Model A          | Model B | Model D |
| 275                 | 1.9–2.8          | 2.6–4.3 | 4.2–7.1 |
| 300                 | 1.1–2.4          | 2.4–4.1 | 4.0–7.0 |
| 350                 | 1.1–2.1          | 2.1–3.7 | 3.6–6.4 |
| 400                 | 1.1–1.7          | 1.7–3.2 | 3.2–5.5 |
| 450                 | 1.0–1.6          | 1.6–2.8 | 2.8–5.5 |
| 500                 | 1.0–1.4          | 1.3–2.5 | 2.5–4.5 |
| 550                 | 0.8–1.3          | 1.3–2.2 | 2.2–3.9 |
| 600                 | 0.7–1.2          | 1.2–2.2 | 2.2–4.3 |



- Recommended products:**
- > Free Flap H 1.5 individual set..... 39
  - > Concealed hinges ..... 43

## HÄFELE FREE FLAP H 1.5 TOUCH OPENING

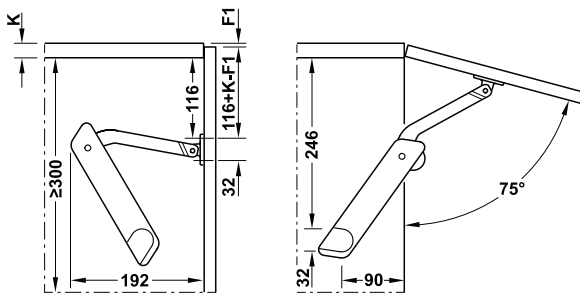
Mounting version for opening the flap slightly, with multi-position stop



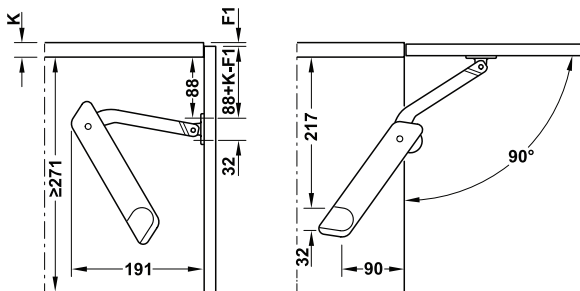
### Note:

- > The following mounting dimensions and sample measurements tables for this kind of application must be adhered to
- > Use two Free flap H 1.5 fittings for flap widths from 600 mm and above
- > The weight specifications in the sample measurements table apply to one Free Flap H 1.5 fitting; the flap weight values double when using two fittings
- > For use in combination with Salice Push hinges and magnetic door catches
- > \*For opening angles of 75° and 90° use one push magnetic door catch and one supplementary magnet.

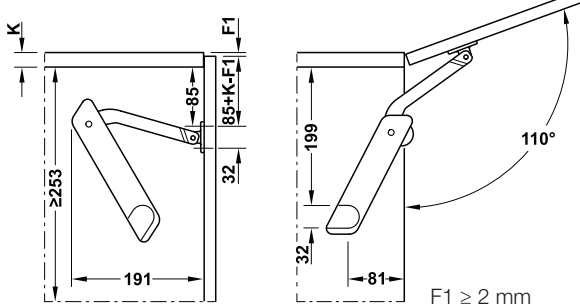
### OPENING ANGLE 75°



### OPENING ANGLE 90°



### OPENING ANGLE 110°



| Cabinet height (mm) | Flap weight (kg) |          |          |
|---------------------|------------------|----------|----------|
|                     | Model B          | Model C  | Model D  |
| 350                 | 4.6–5.3          | –        | –        |
| 400                 | 3.2–4.8          | 4.3–7.0* | 5.5–8.0* |
| 450                 | 2.5–4.0          | 4.0–6.3* | 5.0–7.6  |
| 500                 | 2.2–3.5          | 3.5–5.4* | 4.7–7.3* |
| 550                 | 2.0–3.3          | 2.6–5.1  | 4.0–6.9  |
| 600                 | –                | 2.6–4.7  | 3.6–6.3  |

| Cabinet height (mm) | Flap weight (kg) |          |          |
|---------------------|------------------|----------|----------|
|                     | Model B          | Model C  | Model D  |
| 350                 | 2.4–4.2          | 3.4–5.2* | 4.7–6.9* |
| 400                 | 1.5–3.2          | 3.1–4.9* | 3.9–5.6* |
| 450                 | 1.5–2.6          | 2.6–4.2* | 3.6–5.4* |
| 500                 | 1.4–2.4          | 2.4–3.6  | 3.4–5.0  |
| 550                 | 1.3–2.1          | 1.9–3.2  | 2.6–4.6  |
| 600                 | 1.3–1.9          | 1.8–3.1  | –        |

| Cabinet height (mm) | Flap weight (kg) |         |         |
|---------------------|------------------|---------|---------|
|                     | Model B          | Model C | Model D |
| 300                 | 2.0–3.6          | 2.8–5.3 | –       |
| 350                 | 2.0–3.4          | 2.7–4.6 | 3.6–5.6 |
| 400                 | 1.8–2.9          | 2.6–3.9 | 3.5–5.0 |
| 450                 | 1.4–2.2          | 2.2–3.7 | 2.9–4.4 |
| 500                 | 1.3–2.2          | 2.0–3.4 | 2.6–3.7 |
| 550                 | 1.0–1.8          | 1.6–3.2 | 2.3–3.9 |
| 600                 | –                | 1.5–2.7 | 2.2–3.4 |



### Recommended products:

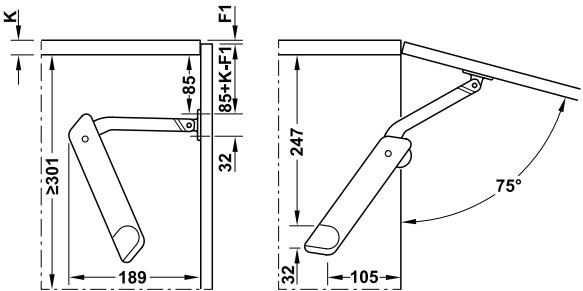
- > Free Flap H 1.5 individual set..... 39
- > Concealed hinges ..... 43

HÄFELE FREE FLAP H 1.5 PUSH-TO-OPEN  
Mounting version for automatic complete opening



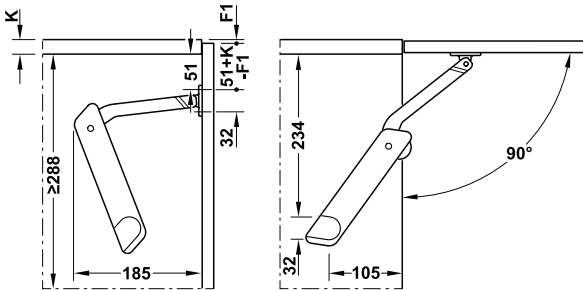
- Note:**
- > The following mounting dimensions and sample measurements tables for this kind of application must be adhered to
  - > Use two Free flap H 1.5 fittings for flap widths from 600 mm and above
  - > The weight specifications in the sample measurements table apply to one Free Flap H 1.5 fitting; the flap weight values double when using two fittings
  - > For use in combination with Salice Push hinges and magnetic door catches
  - > \*For opening angles of 75° use one push magnetic door catch and one supplementary magnet.

OPENING ANGLE 75°



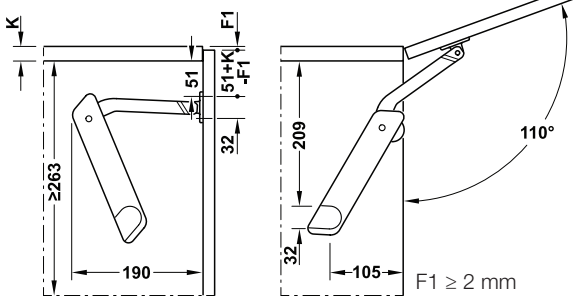
| Cabinet height (mm) | Flap weight (kg) |          |          |
|---------------------|------------------|----------|----------|
|                     | Model B          | Model C  | Model D  |
| 350                 | 2.6–3.6          | 3.1–5.3* | 4.7–6.6* |
| 400                 | 2.3–3.1          | 3.1–5.1* | 4.3–6.6* |
| 450                 | 1.8–2.6          | 2.6–4.0* | 3.6–5.6* |
| 500                 | 1.6–2.3          | 2.3–3.6  | 3.3–4.9  |
| 550                 | 1.5–2.1          | 2.1–3.6  | 3.1–4.6  |
| 600                 | 1.4–2.0          | 2.0–3.2  | 2.7–4.2  |

OPENING ANGLE 90°



| Cabinet height (mm) | Flap weight (kg) |         |         |
|---------------------|------------------|---------|---------|
|                     | Model B          | Model C | Model D |
| 350                 | 1.7–2.5          | 2.1–3.2 | 3.0–4.0 |
| 400                 | 1.3–1.9          | 1.9–3.0 | 2.8–4.0 |
| 450                 | 1.1–1.5          | 1.5–2.6 | 2.2–3.2 |
| 500                 | –                | 1.4–2.4 | 2.0–2.9 |
| 550                 | –                | 1.3–2.2 | 1.8–2.8 |
| 600                 | –                | 1.3–1.7 | 1.5–2.5 |

OPENING ANGLE 110°



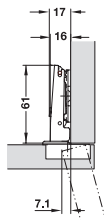
| Cabinet height (mm) | Flap weight (kg) |         |         |
|---------------------|------------------|---------|---------|
|                     | Model B          | Model C | Model D |
| 300                 | 1.5–2.1          | 2.1–3.0 | 2.7–4.1 |
| 350                 | 1.5–2.1          | 1.9–2.7 | 2.6–3.7 |
| 400                 | 1.1–1.5          | 1.5–2.5 | 2.2–3.5 |
| 450                 | 1.0–1.3          | 1.3–2.3 | 2.0–2.9 |
| 500                 | –                | 1.2–1.7 | 1.6–2.7 |
| 550                 | –                | 1.2–1.7 | 1.5–2.3 |
| 600                 | –                | 1.2–1.5 | 1.3–2.1 |



- Recommended products:**
- > Free Flap H 1.5 individual set..... 39
  - > Concealed hinges ..... 43

## SALICE CONCEALED HINGES

With adjustable integrated silicone oil dampers,  
or Series 200 without soft-close



- > Material: Steel, Nickel-plated
- > Min. drilling depth (mm): 12.5/13.5 (Silentia+)  
11 (Without soft close)  
Rapido fixing, series 100, 12.5 mm,  
Logica screw fixing, series 200, 13.5 mm,
- > Adjusting facility: Lateral adjustment from -1.5 to +4.5 mm,  
Height adjustment from -2 to +2 mm,  
Depth adjustment with SALICE SM  
mounting plates from -0.5 to +2.8 mm

## FULL OVERLAY MOUNTING

### Door overlay (mm)

|                      |    |    |    |    |    |    |                              |    |    |    |    |    |   |
|----------------------|----|----|----|----|----|----|------------------------------|----|----|----|----|----|---|
| 9                    | 10 | 11 | 12 | 13 | 14 | 15 | 16                           | 17 | 18 | 19 | 20 | 21 |   |
|                      |    |    |    |    |    |    |                              |    | 3  | 4  | 5  | 6  | 0 |
|                      |    |    |    |    |    |    | 3                            | 4  | 5  | 6  |    |    | 3 |
|                      |    |    | 3  | 4  | 5  | 6  |                              |    |    |    |    |    | 6 |
| 3                    | 4  | 5  | 6  |    |    |    |                              |    |    |    |    |    | 9 |
| Distance to cup (mm) |    |    |    |    |    |    | Mounting plate distance (mm) |    |    |    |    |    |   |

| Cup fixing              | Closing action       | Cat. No     |
|-------------------------|----------------------|-------------|
| <b>Drilling pattern</b> |                      | <b>48/6</b> |
| Logica (toolless)       | With soft-close      | 329.15.731  |
| Screw fixing            |                      | 329.15.701  |
| Logica (toolless)       | Without soft-close   | 329.17.630  |
| Screw fixing            |                      | 329.17.600  |
| Screw fixing            | Reverse sprung/ push | 329.17.900  |

Packing: 1 and 300 pieces

## CRUCIFORM MOUNTING PLATES (SM)



| Distance D (mm) | Screw length mm | Cat. No.   |
|-----------------|-----------------|------------|
| 0               | 11              | 329.73.510 |
| 3               |                 | 329.73.513 |
| 4               |                 | 329.73.524 |
| 6               | 7.5             | 329.73.526 |

Packing: 1 and 300 pieces

## SALICE PUSH CATCH



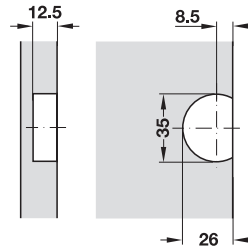
| Description                        | Cat. No.   |
|------------------------------------|------------|
| Push catch 10 x 40 mm drilled hole | 356.06.462 |
| Retaining catch knock-in           | 356.06.464 |
| Surface mount housing, Grey        | 356.06.530 |

## FLAP HINGE

Zinc alloy, 3-dimensionally adjustable opening angle 90°

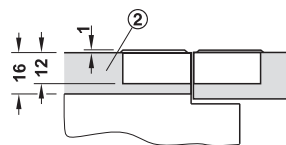


### Drilling pattern

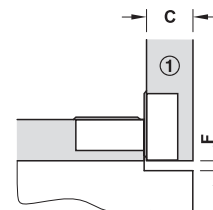


Drilling dimensions in base panel and flap

### Application and planning dimensions

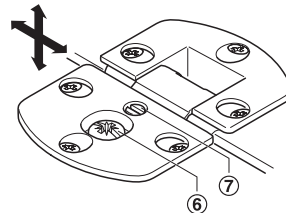


Flap open  
② Base panel

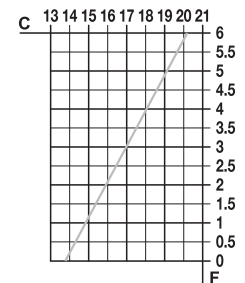


Flap closed  
① Base panel  
C = Flap thickness  
F = Flap

### Adjustment facility



⑥ Side and depth adjustment:  $\pm 1$  mm  
⑦ Height adjustment: +2, =1 mm



Gap calculation with  
1 mm curve

- > Material: Zinc alloy
- > Finish: Nickel plated
- > Installation: For screw fixing

|  | Cat. No.   |
|--|------------|
|  | 342.66.730 |

Packing: 1, 10 or 50 pieces

# MAXI

FOR MID SIZED ONE PIECE FLAPS.



## Maxi

- > Compact, strong flap fitting with multiple application possibilities
- > Effortless flap opening of even heavy front panels weighing up to 20 kg
- > 3 different colours: Nickel, White and Black
- > Minimal space required inside the cabinet (max. 184 mm deep x 26 mm wide)
- > Push-to-open: Opens all the way with just a gentle push on the front\*
- > Touch opening: A gentle push on the front panel opens it slightly, after which it is opened and closed by hand with multi-position stop\*
- > Power assisted opening: Less manual force required to open wide and heavy front panels with handle
- > Extremely wide and heavy front panels with handle: With multi-position stop and optional soft closing\*\*

\* In combination with Salice Push concealed hinges, held in closed position by magnetic door catch and counter plate at the front panel.

\*\*In combination with concealed hinges with or without automatic closing spring as well as component for soft close.

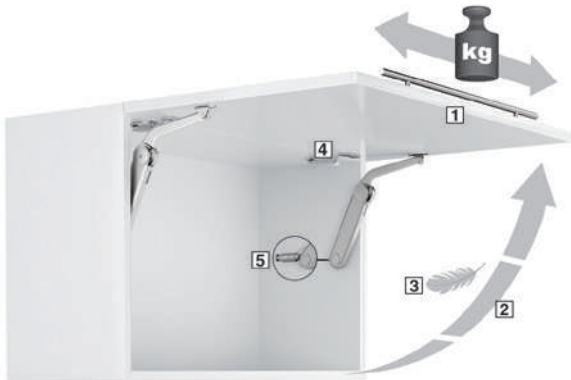


# HÄFELE MAXI FLAP FITTING

## PRODUCT RANGE OVERVIEW

### Häfele Maxi

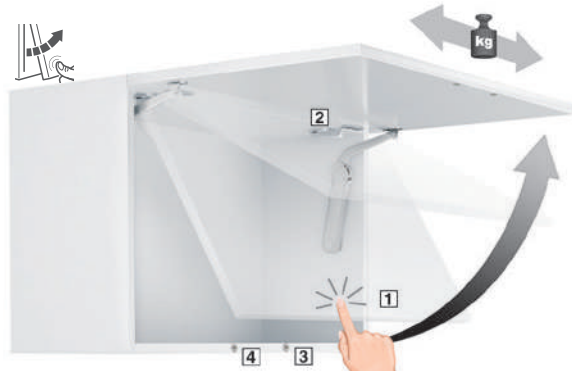
Mounting version for extremely wide and heavy front panels



- 1** For extremely wide and heavy front panels and with handle.
- 2** Flap locks reliably in any position.
- 3** For installation in 32 mm series drilled holes.
- 4** For use in combination with concealed hinges with or without automatic closing spring.
- 5** Optional soft closing mechanism possible (recommended).

### Häfele Maxi push-to-open

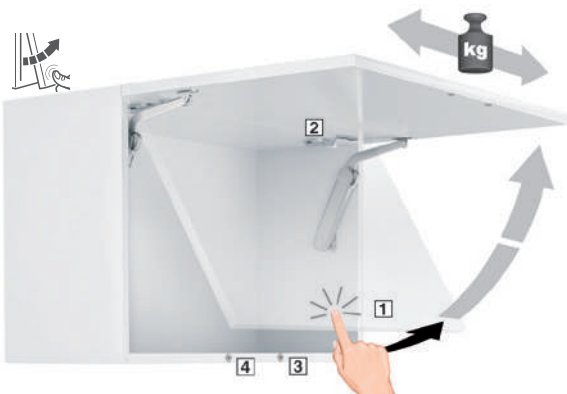
Mounting version for automatic complete opening



- 1** A gentle push on the front opens completely to the end position.
- 2** For use in combination with Salice Push concealed hinges.
- 3** Held closed by magnetic door catch and counterplate on the front panel.
- 4** Additional magnet for holding in closed position (optional).

### Häfele Maxi touch opening

Mounting version for opening the flap slightly, with multi-stop position stop



- 1** A gentle push on the front opens the flap slightly, it can then be fully opened and closed again by hand. The front is locked reliably in any position.
- 2** For use in combination with Salice Push concealed hinges.
- 3** Held closed by magnetic door catch and counterplate on the front panel.
- 4** Additional magnet for holding in closed position (optional).

## HÄFELE MAXI FLAP FITTING



### Note:

- > By changing the installation position and combining with the relevant accessories, all of the most popular opening options can be realised with the Maxi, such as front panels with or without handle, aluminium frame, automatic opening as far as the end position, multi-position stop (flap locks in any position), extremely easy opening of heavy front panels, particularly wide and heavy front panels
- > For one-sided or two-sided application (depends on the flap size and weight)
- > Holding power can be adjusted individually to suit flap weight
- > Can be used in combination with standard 110° concealed hinges (Push hinges for PTO applications)

### DIFFERENTIATION CRITERIA OF THE MODEL VERSIONS

Colourcoded adjustment nut for differentiation between models A (grey), B (beige), C (white) and D (black).



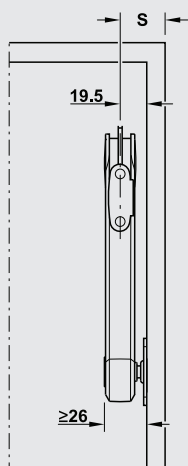
### FINISHES

- > Black | Nickel coloured | White



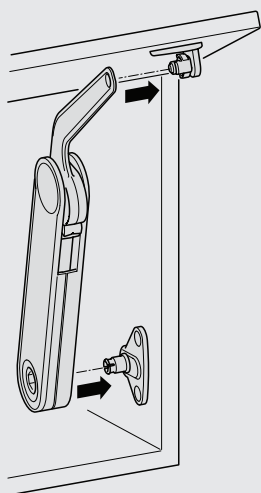
### SIDE SPACE

Side distance  
 $S = \text{door overlay} + 19.5$

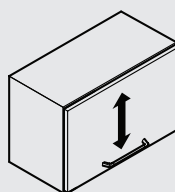


### QUICK FIXING SYSTEM

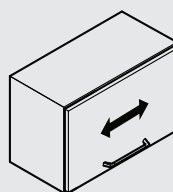
Fitting is simply clipped onto the pre-mounted fixing plates



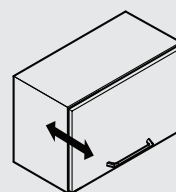
### ADJUSTMENT FACILITY FOR FRONT PANEL



Height adjustment\*



Side adjustment\*

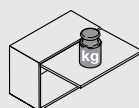


Tilt adjustment\*

\*Dependent on the concealed hinges that are used

### HOLDING POWER ADJUSTMENT

Holding power adjustment with SW10 Allen key



### Note:

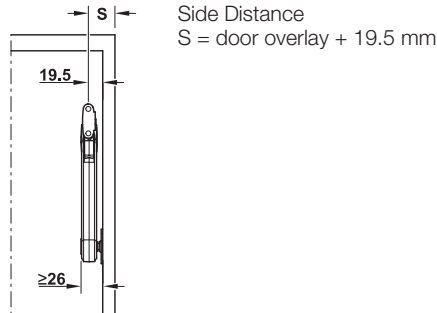
Use position 1–8 for adjusting the holding power  
 Use position 9–12 to re-adjust flap (if necessary)

## HÄFELE MAXI COMPLETE SET

For flaps made of wood or with aluminium frame



### Planning



- > Material: Fitting: Zinc alloy, mounting and screw-on bracket: Steel cover cap for adjusting screw: Plastic
- > Finish/colour: Fitting: Nickel plated, white or black, mounting brackets and screw-on bracket: Nickel plated, white or black
- > Mounting: For left and right hand use
- > Installation: Without tools (clip system)
- > Adjustment facility: Holding power adjustment
- > Opening angle: 75°, 90°, 110°

| Edge distance (mm) | Model | Nickel plated | White      | Black      |
|--------------------|-------|---------------|------------|------------|
| 37                 | A     | 373.69.512    | 373.69.742 | 373.69.342 |
|                    | B     | 373.69.412    | 373.69.744 | 373.69.344 |
|                    | C     | 373.69.712    | 373.69.746 | 373.69.346 |
|                    | D     | 373.69.312    | 373.69.748 | 373.69.348 |

Packing: 1 set



#### Supplied with:

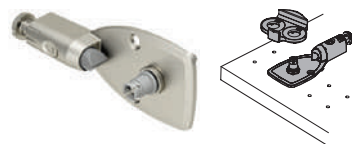
- > 1 Flap stay
- > 1 Mounting bracket for cabinet
- > 1 Screw-on bracket for flap (for Euro screws)



#### Order Reference:

Use two Maxi fittings for flap widths from 600 mm and above.

## SOFT CLOSING MECHANISM



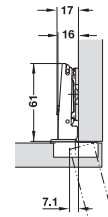
- > Area of application: For edge distances 37 mm
- > Features: Adjustable dampening distance

| Material   | Nickel plated | White      | Black      |
|------------|---------------|------------|------------|
| Zinc alloy | 373.69.799    | 373.69.798 | 373.69.398 |

Packing: 1 piece

## SALICE CONCEALED HINGES

With adjustable integrated silicone oil dampers, or Series 200 without soft-close



- > Material: Steel, Nickel-plated
- > Min. drilling depth (mm): 12.5/13.5 (Silentia+) 11 (Without soft close)
- > Adjusting facility: Rapido fixing, series 100, 12.5 mm, Logica screw fixing, series 200, 13.5 mm, Lateral adjustment from -1.5 to +4.5 mm, Height adjustment from -2 to +2 mm, Depth adjustment with SALICE SM mounting plates from -0.5 to +2.8 mm

## FULL OVERLAY MOUNTING

### Door overlay (mm)

|                      |    |    |    |    |    |    |    |                              |    |    |    |    |   |
|----------------------|----|----|----|----|----|----|----|------------------------------|----|----|----|----|---|
| 9                    | 10 | 11 | 12 | 13 | 14 | 15 | 16 | 17                           | 18 | 19 | 20 | 21 |   |
|                      |    |    |    |    |    |    |    |                              | 3  | 4  | 5  | 6  | 0 |
|                      |    |    |    |    |    | 3  | 4  | 5                            | 6  |    |    |    | 3 |
|                      |    |    | 3  | 4  | 5  | 6  |    |                              |    |    |    |    | 6 |
| 3                    | 4  | 5  | 6  |    |    |    |    |                              |    |    |    |    | 9 |
| Distance to cup (mm) |    |    |    |    |    |    |    | Mounting plate distance (mm) |    |    |    |    |   |

| Cup fixing              | Closing action       | Cat. No     |
|-------------------------|----------------------|-------------|
| <b>Drilling pattern</b> |                      | <b>48/6</b> |
| Logica (toolless)       | With soft-close      | 329.15.731  |
| Screw fixing            |                      | 329.15.701  |
| Logica (toolless)       | Without soft-close   | 329.17.630  |
| Screw fixing            |                      | 329.17.600  |
| Screw fixing            | Reverse sprung/ push | 329.17.900  |

Packing: 1 and 300 pieces

## CRUCIFORM MOUNTING PLATES (SM)



| Distance D (mm) | Screw length mm | Cat. No.   |
|-----------------|-----------------|------------|
| 0               | 11              | 329.73.510 |
| 3               |                 | 329.73.513 |
| 4               | 7.5             | 329.73.524 |
| 6               |                 | 329.73.526 |

Packing: 1 and 300 pieces

## SALICE PUSH CATCH



| Description                        | Cat. No.   |
|------------------------------------|------------|
| Push catch 10 x 40 mm drilled hole | 356.06.462 |
| Retaining catch knock-in           | 356.06.464 |
| Surface mount housing, Grey        | 356.06.530 |

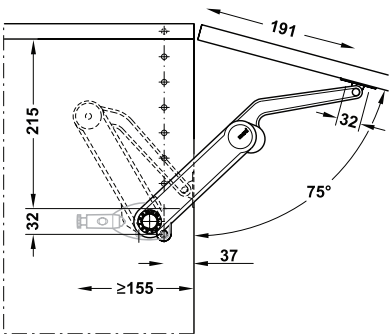
HÄFELE MAXI

Mounting version for extremely wide and heavy front panels



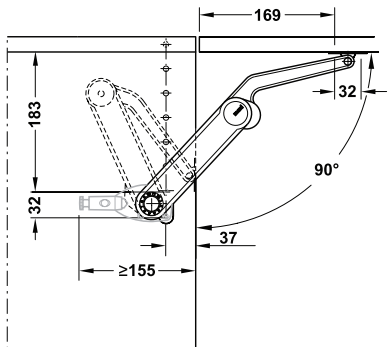
- Note:**
- > The following mounting dimensions and sample measurements tables for this kind of application must be adhered to
  - > Use two Maxi fittings for flap widths from 600 mm and above
  - > The weight specification applies to one Maxi fitting, flap weight values double when using two Maxi fittings.
  - > For use in combination with concealed hinges with or without automatic closing spring
  - > Soft closing provided by additional add-on damper (rather than the standard mounting bracket).

OPENING ANGLE 75°



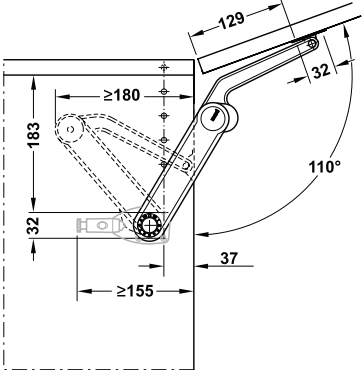
| Cabinet height (mm) | Flap weight (kg) |          |           |           |
|---------------------|------------------|----------|-----------|-----------|
|                     | Model A          | Model B  | Model C   | Model D   |
| 300                 | 3.8–7.1          | 6.7–13.7 | 11.9–21.0 | 15.4–27.3 |
| 400                 | 2.8–5.3          | 5.0–10.3 | 8.9–15.8  | 11.6–20.5 |
| 500                 | 2.3–4.3          | 4.1–8.3  | 7.2–12.5  | 9.4–16.2  |
| 600                 | 1.9–3.5          | 3.3–7.0  | 5.9–10.6  | 7.6–13.7  |
| 700                 | 1.6–3.0          | 2.8–5.7  | 5.0–8.8   | 6.5–11.4  |
| 800                 | 1.4–2.7          | 2.5–5.1  | 4.4–7.9   | 5.7–10.4  |
| 900                 | 1.3–2.4          | 2.2–4.6  | 4.0–7.0   | 5.2–9.1   |
| 1000                | 1.1–2.1          | 2.0–4.1  | 3.6–6.3   | 4.6–8.2   |

OPENING ANGLE 90°



| Cabinet height (mm) | Flap weight (kg) |          |          |           |
|---------------------|------------------|----------|----------|-----------|
|                     | Model A          | Model B  | Model C  | Model D   |
| 300                 | 3.0–5.3          | 5.1–10.2 | 9.1–15.8 | 11.9–20.8 |
| 400                 | 2.3–4.0          | 3.8–7.6  | 6.9–11.9 | 8.9–15.6  |
| 500                 | 1.8–3.2          | 3.1–6.1  | 5.5–9.6  | 7.2–12.5  |
| 600                 | 1.5–2.7          | 2.6–5.1  | 4.6–7.9  | 6.0–10.4  |
| 700                 | 1.3–2.2          | 2.1–4.2  | 3.8–6.6  | 4.9–8.7   |
| 800                 | 1.1–2.0          | 1.9–3.9  | 3.4–5.9  | 4.4–7.8   |
| 900                 | 1.0–1.8          | 1.7–3.4  | 3.0–5.2  | 3.9–6.9   |
| 1000                | 0.6–1.6          | 1.5–3.0  | 2.7–4.7  | 3.6–6.2   |

OPENING ANGLE 110°



| Cabinet height (mm) | Flap weight (kg) |         |          |          |
|---------------------|------------------|---------|----------|----------|
|                     | Model A          | Model B | Model C  | Model D  |
| 300                 | 2.4–4.0          | 3.9–7.5 | 6.8–11.6 | 9.2–15.0 |
| 400                 | 1.8–3.0          | 2.9–5.6 | 5.1–8.7  | 6.9–11.2 |
| 500                 | 1.4–2.4          | 2.4–4.5 | 4.0–7.1  | 5.7–9.0  |
| 600                 | 1.2–2.0          | 1.9–3.8 | 3.3–5.9  | 4.5–7.6  |
| 700                 | 1.0–1.7          | 1.7–3.1 | 2.9–4.8  | 3.8–6.2  |
| 800                 | 0.9–1.4          | 1.4–2.8 | 2.6–4.3  | 3.4–5.6  |
| 900                 | 0.8–1.3          | 1.3–2.5 | 2.3–3.8  | 3.0–5.0  |
| 1000                | 0.7–1.2          | 1.1–2.2 | 2.0–3.5  | 2.7–4.5  |



- Recommended products:**
- > Concealed hinges ..... 47
  - > Maxi complete set..... 47
  - > Soft closing mechanism ..... 47

## HÄFELE MAXI TOUCH OPENING

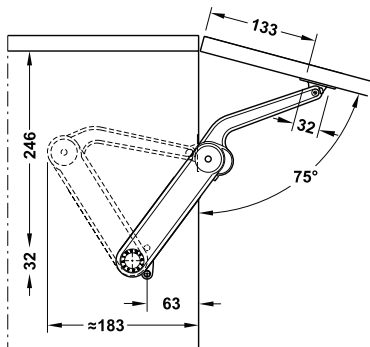
Mounting version for opening the flap slightly, with multi-position stop



### Note:

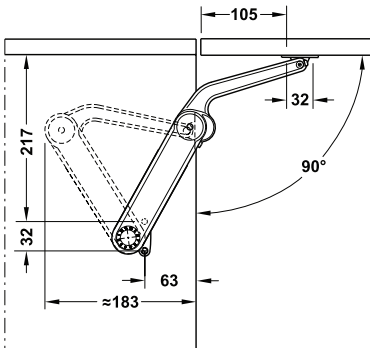
- > The following dimensions and sample measurements tables for this kind of application must be adhered to.
- > Use two Maxi fittings for flap widths from 600 mm and above
- > The weight specification applies to one Maxi fitting, flap weight values double when using two Maxi fittings.
- > For use in combination with Salice Push hinges and magnetic door catches
- > Use one Push magnetic door catch and one supplementary magnet (at some distance) for holding the flap reliably in closed position

### OPENING ANGLE 75°



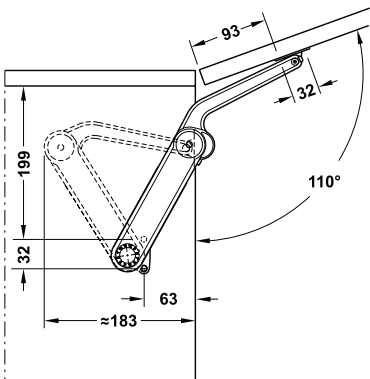
| Cabinet height (mm) | Flap weight (kg) |         |          |          |
|---------------------|------------------|---------|----------|----------|
|                     | Model A          | Model B | Model C  | Model D  |
| 300                 | 2.0–3.8          | 4.0–7.7 | 7.0–14.0 | –        |
| 400                 | 1.6–3.1          | 3.0–6.3 | 5.0–11.5 | 7.0–12.5 |
| 500                 | 1.3–2.5          | 2.7–5.2 | 4.7–8.4  | 5.5–10.5 |
| 600                 | –                | 2.4–4.5 | 4.3–7.8  | 4.7–8.4  |
| 700                 | –                | 2.2–4.0 | 4.0–7.5  | 4.3–8.0  |
| 800                 | –                | –       | 3.6–6.2  | 3.9–7.3  |
| 900                 | –                | –       | 3.4–5.8  | 3.5–6.7  |

### OPENING ANGLE 90°



| Cabinet height (mm) | Flap weight (kg) |         |          |          |
|---------------------|------------------|---------|----------|----------|
|                     | Model A          | Model B | Model C  | Model D  |
| 300                 | 2.0–3.5          | 3.3–6.7 | 6.0–10.3 | 7.8–13.6 |
| 400                 | 1.5–2.6          | 2.5–5.0 | 5.5–7.8  | 5.8–10.2 |
| 500                 | 1.2–2.1          | 2.0–4.0 | 3.6–6.3  | 4.7–8.2  |
| 600                 | 1.0–1.8          | 1.7–3.3 | 3.0–5.2  | 3.9–6.8  |
| 700                 | 0.9–1.4          | 1.4–2.7 | 2.5–4.3  | 3.2–5.7  |
| 800                 | 0.7–1.3          | 1.2–2.6 | 2.2–3.9  | 2.9–5.1  |
| 900                 | 0.7–1.2          | 1.1–2.2 | 2.0–3.4  | 2.6–4.5  |
| 1000                | 0.6–1.0          | 1.0–2.0 | 1.8–3.1  | 2.4–4.1  |

### OPENING ANGLE 110°



| Cabinet height (mm) | Flap weight (kg) |         |         |         |
|---------------------|------------------|---------|---------|---------|
|                     | Model A          | Model B | Model C | Model D |
| 300                 | 1.2–2.9          | 2.6–5.5 | 4.6–9.5 | –       |
| 400                 | 0.9–2.2          | 2.0–4.4 | 3.8–7.0 | 4.6–8.7 |
| 500                 | 0.7–1.8          | 1.7–3.4 | 3.1–5.8 | 3.7–6.5 |
| 600                 | –                | 1.4–3.0 | 2.6–4.7 | 3.1–5.8 |
| 700                 | –                | –       | 2.3–4.1 | 2.8–4.5 |
| 800                 | –                | –       | 2.0–3.8 | 2.4–4.1 |
| 900                 | –                | –       | –       | 2.1–3.9 |
| 1000                | –                | –       | –       | 1.8–3.7 |

Dimensions in mm Dimensional data not binding, images are for illustrative purposes only. We reserve the right to alter specifications without notice.

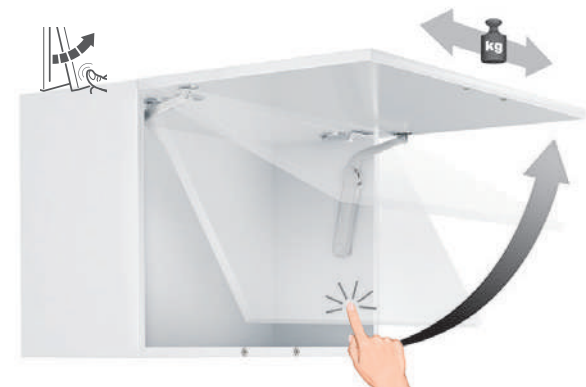


### Recommended products:

- > Concealed hinges ..... 47
- > Maxi complete set ..... 47
- > Soft closing mechanism ..... 47

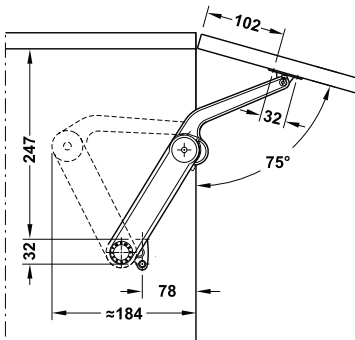


HÄFELE MAXI PUSH-TO-OPEN  
Mounting version for automatic complete opening



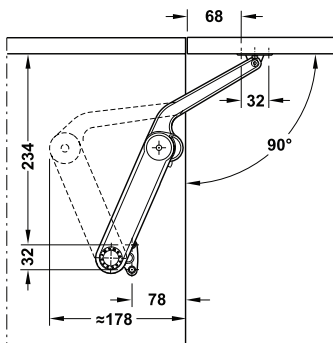
- Note:**
- > The following mounting dimensions and sample measurements tables for this kind of application must be adhered to
  - > Use two Maxi fittings for flap widths from 600 mm and above
  - > The weight specification applies to one Maxi fitting, flap weight values double when using two Maxi fittings.
  - > For use in combination with Salice Push concealed hinges and magnetic door catches
  - > Use on Push magnetic door catch and one supplementary magnet (at some distance) for holding the flap reliably in closed position

OPENING ANGLE 75°



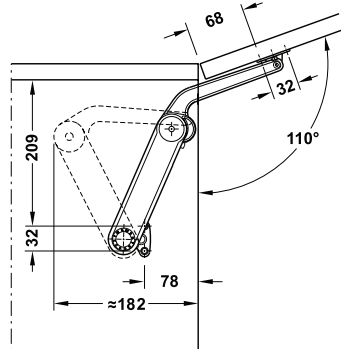
| Cabinet height (mm) | Flap weight (kg) |         |         |          |
|---------------------|------------------|---------|---------|----------|
|                     | Model A          | Model B | Model C | Model D  |
| 300                 | 2.4–3.3          | 4.5–6.8 | 5.5–9.5 | 8.6–11.8 |
| 400                 | 1.7–2.3          | 3.6–5.3 | 4.6–7.7 | 6.0–10.1 |
| 500                 | –                | 2.7–4.7 | 4.3–7.0 | 5.8–9.2  |
| 600                 | –                | 2.1–3.3 | 2.9–5.1 | 3.9–6.6  |
| 700                 | –                | 2.1–3.0 | 2.6–4.5 | 3.4–5.8  |
| 800                 | –                | –       | 2.5–4.2 | 3.3–5.5  |
| 900                 | –                | –       | 2.1–3.7 | 2.8–4.8  |
| 1000                | –                | –       | 2.0–3.4 | 2.7–4.4  |

OPENING ANGLE 90°



| Cabinet height (mm) | Flap weight (kg) |         |         |         |
|---------------------|------------------|---------|---------|---------|
|                     | Model A          | Model B | Model C | Model D |
| 300                 | 1.7–2.4          | 3.1–4.6 | 3.8–7.0 | 5.8–9.8 |
| 400                 | –                | 2.4–3.7 | 3.1–5.5 | 4.2–7.1 |
| 500                 | –                | 1.6–2.9 | 2.6–4.5 | 3.4–5.8 |
| 600                 | –                | 1.5–2.4 | 2.1–3.6 | 2.9–4.8 |
| 700                 | –                | 1.2–2.1 | 1.5–3.2 | 2.5–4.0 |
| 800                 | –                | –       | 1.3–2.9 | 2.2–3.8 |
| 900                 | –                | –       | 1.1–2.6 | 1.9–3.3 |
| 1000                | –                | –       | –       | 1.6–3.0 |

OPENING ANGLE 110°



| Cabinet height (mm) | Flap weight (kg) |         |         |         |
|---------------------|------------------|---------|---------|---------|
|                     | Model A          | Model B | Model C | Model D |
| 300                 | –                | 2.7–4.0 | 3.5–6.1 | 5.1–7.8 |
| 400                 | –                | 1.8–3.0 | 2.7–4.6 | 3.4–5.0 |
| 500                 | –                | 1.7–2.4 | 2.3–3.7 | 3.0–4.9 |
| 600                 | –                | 1.4–2.1 | 1.8–3.1 | 2.5–4.2 |
| 700                 | –                | –       | 1.6–2.7 | 2.2–3.5 |
| 800                 | –                | –       | –       | 1.8–3.1 |
| 900                 | –                | –       | –       | 1.4–2.9 |
| 1000                | –                | –       | –       | 1.2–2.6 |



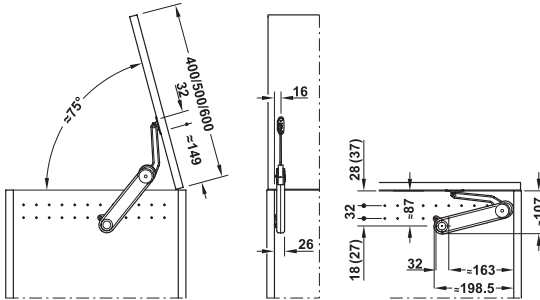
- Recommended products:**
- > Concealed hinges ..... 47
  - > Maxi complete set ..... 47
  - > Soft closing mechanism ..... 47

## HÄFELE MAXI UP

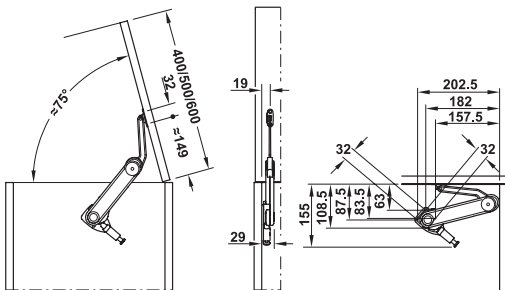
For lids (toy boxes, linen boxes, etc)



### Installation

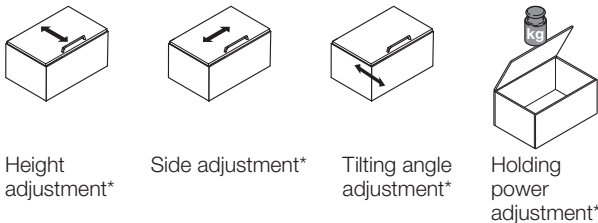


Version without soft closing mechanism



Version with soft closing mechanism

### Adjustment facility



\*Depending on the hinges that are used

### Sample measurements table for max. lid weight

| Lid depth (mm)        | Lid weight (kg) |          |           |
|-----------------------|-----------------|----------|-----------|
|                       | Model F         | Model G  | Model H   |
| <b>1 lid fitting</b>  |                 |          |           |
| 400                   | 1.6-3.1         | 3.0-5.3  | 5.2-9.4   |
| 500                   | 1.3-2.6         | 2.5-4.2  | 4.3-7.5   |
| 600                   | 1.1-2.5         | 2.3-4.2  | 4.0-6.7   |
| <b>2 lid fittings</b> |                 |          |           |
| 400                   | 3.2-6.2         | 6.6-10.6 | 10.4-18.8 |
| 500                   | 2.6-5.2         | 5.0-8.4  | 8.6-15.0  |
| 600                   | 2.2-5.0         | 4.6-8.4  | 8.0-13.4  |



- > Opening angle: Approx. 75°
- > Material: Stay: Zinc alloy, Brackets, screw-on brackets: Steel Safety cap for adjusting screw: Plastic
- > Finish: Nickel plated, Safety cap: Grey
- > Installation: Without tools (clip system) onto pre-mounted mounting bracket

| Model                     | Cat. No.   |
|---------------------------|------------|
| F, Adjusting screw: Blue  | 373.85.700 |
| G, Adjusting screw: Brown | 373.85.701 |
| H, Adjusting screw: Black | 373.85.702 |

Packing: 1 piece



### Order Reference:

Mounting brackets and screw-on brackets are not supplied. Please order separately. Soft closing mechanism available for the lid (optional).

## MOUNTING BRACKET FOR CABINET



- > Area of application: For fixing the lid stay to the cabinet
- > Material: Steel, Nickel plated

| Cabinet edge distance (mm) | Cat. No.   |
|----------------------------|------------|
| 37                         | 373.69.906 |

Packing: 1 or 20 pieces

## SCREW ON BRACKET FOR LID



- > Area of application: For fixing the lid stay to the lid
- > Material: Steel, Nickel plated

| Installation     | Cat. No.   |
|------------------|------------|
| For screw fixing | 373.66.681 |

Packing: 1 piece

## SOFT CLOSING MECHANISM



- > Area of application: For edge distances 37 mm
- > Features: Adjustable dampening distance

| Material                  | Cat. No.   |
|---------------------------|------------|
| Zinc alloy, nickel plated | 373.69.799 |

Packing: 1 piece



### Recommended products:

- > Concealed hinges ..... 47

# DUO/DUO FORTE

FLAP FITTINGS FOR MULTIPLE APPLICATIONS.



## **Multi-functionality in the application**

- > Lid stay and flap stay in one
- > Duo standard and forte for flap heights of 200 to 700 mm
- > 3 Different colours: Nickel, white and black
- > Minimal space required inside the cabinet (max. 172 mm deep x 25 mm wide)
- > Multi position stop, adjustable force
- > Touch opening: Slight pressure on the bottom of the front opens the flap slightly, for easy opening and closing by hand\*

## HÄFELE DUO/DUO FORTE



### Note:

- > Suitable for flaps with handle or push-to-open function
- > Adjusting the arms (overshear) turns the lid stay into a flap stay
- > Less space required inside the cabinet
- > Wear-resistant friction coupling with large adjusting range
- > Can be used on one or both sides (depending on the flap size)
- > Holding power can be adjusted individually to suit flap weight
- > The soft closing function is provided in the closing direction in combination with 110° concealed hinges with soft closing mechanism (Push hinges for PTO application)

### HOLDING POWER ADJUSTMENT



Holding power adjustment with SW4 Allen key

#### Stronger holding power

= Locking function = Flap locks in any position (multi-position stop)

#### Weaker holding power

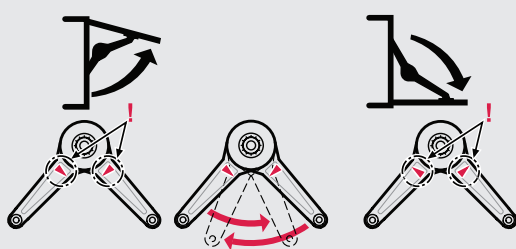
= Braking function = Lid stay closed softly/flap stay opens gently

### FINISHES

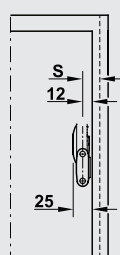
> Black | Nickel coloured | White



### APPLICATION

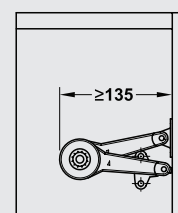


### SIDE SPACE REQUIREMENT

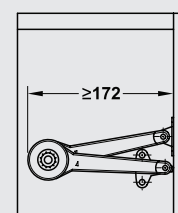


S = door overlay + 12 mm

### MINIMUM INSTALLATION DEPTH

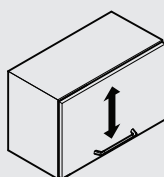


Duo standard

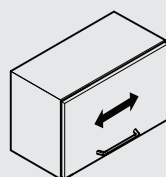


Duo forte

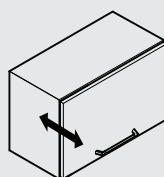
### ADJUSTMENT FACILITY FOR FRONT PANEL



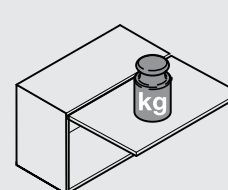
Height adjustment\*



Side adjustment\*



Tilt adjustment\*



Holding power adjustment

\*Depending on the hinges that are used

**HÄFELE DUO STANDARD****Complete set**

Nickel plated

White

Black

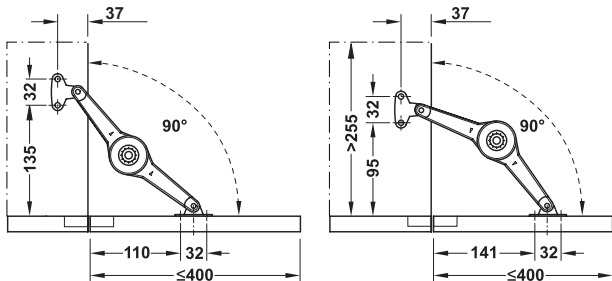
- > Area of application: For flaps made of wood or with aluminium frame, from frame width 45 mm
- > Material: Zinc alloy
- > Finish: Nickel plated, white or black
- > Mounting: For left and right hand use
- > Installation: For chipboard screws  
Without tools (clip system) onto pre-mounted mounting bracket
- > Adjustment facility: Holding power adjustment
- > Edge distance (mm): 37

| Finish        | Cat. No.   |
|---------------|------------|
| Nickel plated | 373.66.612 |
| White         | 373.66.262 |
| Black         | 373.66.212 |

Packing: 1 piece

**Supplied with:**

- > 1 Lid stay
- > 1 Mounting bracket for cabinet
- > 1 Screw-on bracket for flap

**HÄFELE DUO****Installation as flap stay (use 2 fittings)**

Separate catch required.

Separate catch not required.

| Cabinet height (mm) | Flap weight (kg) |                  |
|---------------------|------------------|------------------|
|                     | Locking function | Braking function |
|                     | 2 fittings       | 2 fittings       |
| 200                 | 15.0             | 15.0             |
| 250                 | 12.0             | 15.0             |
| 300                 | 10.0             | 13.0             |
| 350                 | 8.5              | 11.0             |
| 400                 | 7.0              | 10.0             |

**Note:**

- > Application possible from a cabinet height of 300 mm (internal height min. 255 mm).
- > Space requirement for fitting inside the cabinet when the flap is being closed: 130 mm from front edge of cabinet.

**Recommended products:**

- > Concealed hinges ..... 47
- > Flap hinges ..... 43

**Order Reference:**

The model selection of the flap fitting set depends on the cabinet height and flap weight. Refer to page 55-56.

**HÄFELE DUO FORTE****Complete set**

Nickel plated

White

Black

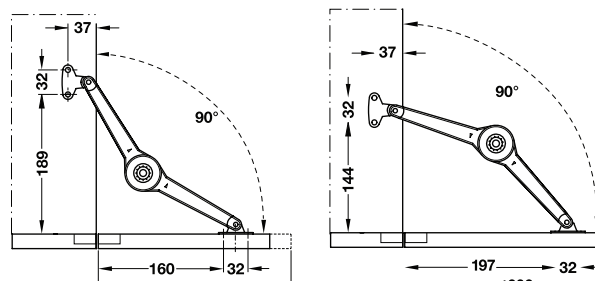
- > Area of application: For flaps made of wood or with aluminium frame, from frame width 45 mm
- > Material: Zinc alloy
- > Finish: Nickel plated, white or black
- > Mounting: For left and right hand use
- > Installation: For chipboard screws  
Without tools (clip system) onto pre-mounted mounting bracket
- > Adjustment facility: Holding power adjustment
- > Edge distance (mm): 37

| Finish        | Cat. No.   |
|---------------|------------|
| Nickel plated | 373.66.632 |
| White         | 373.66.372 |
| Black         | 373.66.312 |

Packing: 1 piece

**Supplied with:**

- > 1 Lid stay
- > 1 Mounting bracket for cabinet
- > 1 Screw-on bracket for flap

**HÄFELE DUO FORTE****Installation as flap stay (use 2 fittings)**

Separate catch required.

Separate catch not required.

| Cabinet height (mm) | Flap weight (kg) |                  |
|---------------------|------------------|------------------|
|                     | Locking function | Braking function |
|                     | 2 fittings       | 2 fittings       |
| 300                 | 15.0             | 15.0             |
| 350                 | 13.5             | 15.0             |
| 400                 | 12.0             | 15.0             |
| 450                 | 11.0             | 14.0             |
| 500                 | 9.5              | 12.0             |
| 550                 | 8.5              | 11.0             |
| 600                 | 8.0              | 10.0             |

**Note:**

- > Application possible from a cabinet height of 400 mm (internal height min. 340 mm).
- > Space requirement for fitting inside the cabinet when the flap is being closed: 175 mm from front edge of cabinet.

**Order Reference:**

The model selection of the flap fitting set depends on the cabinet height and flap weight. Refer to page 57.



## HÄFELE DUO STANDARD

Standard application for flap with handles

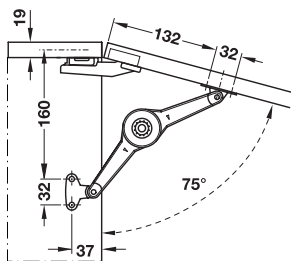


### Note:

- > The following mounting dimensions and sample measurements tables for this kind of application must be adhered to
- > Use two Duo fittings for flap widths from 600 mm and above
- > For use in combination with 110° concealed hinges with automatic closing spring or integrated soft closing mechanism.

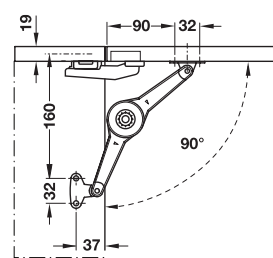
### INSTALLATION AS LID STAY

Opening angle 75°



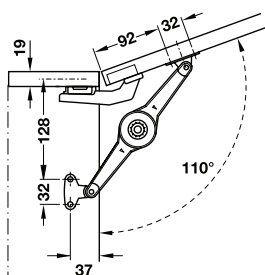
| Cabinet height (mm) | Flap weight (kg) |            |                  |            |
|---------------------|------------------|------------|------------------|------------|
|                     | Locking function |            | Braking function |            |
|                     | 1 fitting        | 2 fittings | 1 fitting        | 2 fittings |
| 250                 | 7.0              | 15.0       | 9.0              | 15.0       |
| 300                 | 6.0              | 12.0       | 7.5              | 15.0       |
| 350                 | 5.0              | 10.0       | 6.5              | 13.0       |
| 400                 | 4.5              | 9.0        | 6.0              | 11.5       |
| 450                 | 4.0              | 8.0        | 5.0              | 10.0       |
| 500                 | 3.5              | 7.0        | 4.5              | 9.0        |

Opening angle 90°



| Cabinet height (mm) | Flap weight (kg) |            |                  |            |
|---------------------|------------------|------------|------------------|------------|
|                     | Locking function |            | Braking function |            |
|                     | 1 fitting        | 2 fittings | 1 fitting        | 2 fittings |
| 250                 | 6.0              | 12.0       | 7.5              | 15.0       |
| 300                 | 5.0              | 10.0       | 6.5              | 13.0       |
| 350                 | 4.5              | 8.5        | 5.5              | 11.0       |
| 400                 | 4.0              | 7.0        | 5.0              | 10.0       |
| 450                 | 3.5              | 6.5        | 4.5              | 8.5        |
| 500                 | 3.0              | 6.0        | 4.0              | 7.5        |

Opening angle 110°



| Cabinet height (mm) | Flap weight (kg) |            |                  |            |
|---------------------|------------------|------------|------------------|------------|
|                     | Locking function |            | Braking function |            |
|                     | 1 fitting        | 2 fittings | 1 fitting        | 2 fittings |
| 200                 | 6.0              | 12.0       | 8.0              | 15.0       |
| 250                 | 5.0              | 9.5        | 6.0              | 12.0       |
| 300                 | 4.0              | 8.0        | 5.0              | 10.0       |
| 350                 | 3.5              | 7.0        | 4.0              | 9.0        |
| 400                 | 3.0              | 6.0        | 4.0              | 7.5        |
| 450                 | 2.5              | 5.5        | 3.5              | 7.0        |
| 500                 | 2.0              | 5.0        | 3.0              | 6.0        |

Dimensions in mm Dimensional data not binding, images are for illustrative purposes only. We reserve the right to alter specifications without notice.



### Recommended products:

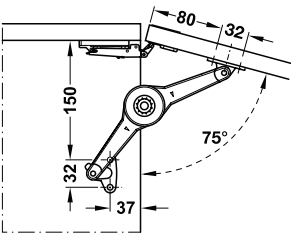
- > Concealed hinges ..... 47
- > Complete set ..... 54

HÄFELE DUO STANDARD  
Application for front panels without handle



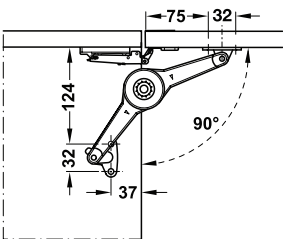
- Note:**
- > The following mounting dimensions and sample measurements tables for this kind of application must be adhered to
  - > Use two Duo fittings for flap widths from 600 mm and above
  - > For use in combination with Salice Push hinges and magnetic door catches
  - > Use one Push magnetic door catch and one supplementary magnet (at some distance for holding the flap reliably in closed position)

INSTALLATION AS LID STAY  
Opening angle 75°



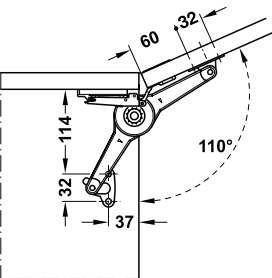
| Cabinet height (mm) | 1 fitting                    |                          | 2 fittings                   |                          |
|---------------------|------------------------------|--------------------------|------------------------------|--------------------------|
|                     | Max. front panel weight (kg) | Front panel opening (mm) | Max. front panel weight (kg) | Front panel opening (mm) |
| 250                 | 8.8                          | 40                       | 10.1                         | 35                       |
| 300                 | 7.9                          | 50                       | 9.9                          | 40                       |
| 350                 | 7.5                          | 45                       | 9.8                          | 40                       |
| 400                 | 5.6                          | 45                       | 9.2                          | 40                       |
| 450                 | 5.6                          | 65                       | 8.4                          | 45                       |
| 500                 | 5.5                          | 85                       | 6.5                          | 50                       |

Opening angle 90°



| Cabinet height (mm) | 1 fitting                    |                          | 2 fittings                   |                          |
|---------------------|------------------------------|--------------------------|------------------------------|--------------------------|
|                     | Max. front panel weight (kg) | Front panel opening (mm) | Max. front panel weight (kg) | Front panel opening (mm) |
| 200                 | 6.6                          | 30                       | 9.6                          | 30                       |
| 250                 | 6.5                          | 32                       | 9.3                          | 30                       |
| 300                 | 6.5                          | 40                       | 7.5                          | 40                       |
| 350                 | 6.4                          | 45                       | 7.1                          | 50                       |
| 400                 | 5.6                          | 50                       | 6.9                          | 50                       |
| 450                 | 5.2                          | 70                       | 6.9                          | 65                       |
| 500                 | 4.5                          | 75                       | 6.7                          | 65                       |

Opening angle 110°



| Cabinet height (mm) | 1 fitting                    |                          | 2 fittings                   |                          |
|---------------------|------------------------------|--------------------------|------------------------------|--------------------------|
|                     | Max. front panel weight (kg) | Front panel opening (mm) | Max. front panel weight (kg) | Front panel opening (mm) |
| 200                 | 7.6                          | 55                       | 9.6                          | 40                       |
| 250                 | 6.8                          | 70                       | 9.0                          | 45                       |
| 300                 | 5.5                          | 95                       | 9.0                          | 50                       |
| 350                 | 4.8                          | 100                      | 7.3                          | 70                       |
| 400                 | 4.2                          | 110                      | 7.2                          | 75                       |
| 450                 | 3.4                          | 120                      | 6.2                          | 80                       |
| 500                 | 3.0                          | 130                      | 5.1                          | 80                       |



- Recommended products:**
- > Concealed hinges ..... 47
  - > Complete set ..... 54

## HÄFELE DUO FORTE

Standard application for flap with handles

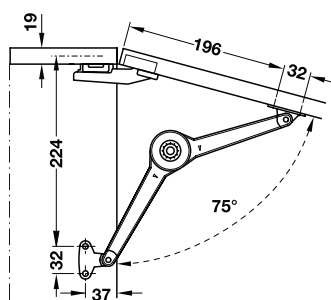


### Note:

- > The following mounting dimensions and sample measurements tables for this kind of application must be adhered to
- > Use two Duo Forte fittings for flap widths from 600 mm and above
- > For use in combination with 110° concealed hinges with automatic closing spring or integrated soft closing mechanism.

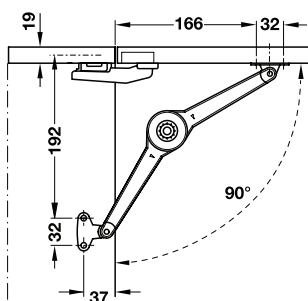
### INSTALLATION AS LID STAY

Opening angle 75°



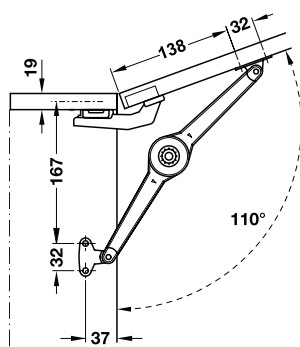
| Cabinet height (mm) | Flap weight (kg) |            |                  |            |
|---------------------|------------------|------------|------------------|------------|
|                     | Locking function |            | Braking function |            |
|                     | 1 fitting        | 2 fittings | 1 fitting        | 2 fittings |
| 300                 | 9.0              | 15.0       | 12.0             | 15.0       |
| 350                 | 8.0              | 15.0       | 11.0             | 15.0       |
| 400                 | 7.0              | 14.0       | 9.0              | 15.0       |
| 450                 | 6.0              | 12.5       | 8.0              | 15.0       |
| 500                 | 5.5              | 11.0       | 7.0              | 15.0       |
| 550                 | 5.0              | 10.0       | 6.5              | 13.0       |
| 600                 | 5.0              | 9.5        | 6.0              | 12.0       |
| 650                 | 4.0              | 8.5        | 5.5              | 11.0       |
| 700                 | 4.0              | 8.0        | 5.0              | 10.5       |

Opening angle 90°



| Cabinet height (mm) | Flap weight (kg) |            |                  |            |
|---------------------|------------------|------------|------------------|------------|
|                     | Locking function |            | Braking function |            |
|                     | 1 fitting        | 2 fittings | 1 fitting        | 2 fittings |
| 300                 | 7.5              | 15.0       | 9.0              | 15.0       |
| 350                 | 6.5              | 13.5       | 8.0              | 15.0       |
| 400                 | 6.0              | 12.0       | 7.5              | 15.0       |
| 450                 | 5.5              | 11.0       | 7.0              | 14.0       |
| 500                 | 5.0              | 9.5        | 6.0              | 12.0       |
| 550                 | 4.5              | 8.5        | 5.5              | 11.0       |
| 600                 | 4.0              | 8.0        | 5.0              | 10.0       |
| 650                 | 3.5              | 7.0        | 5.0              | 9.5        |
| 700                 | 3.0              | 7.0        | 4.0              | 9.0        |

Opening angle 110°



| Cabinet height (mm) | Flap weight (kg) |            |                  |            |
|---------------------|------------------|------------|------------------|------------|
|                     | Locking function |            | Braking function |            |
|                     | 1 fitting        | 2 fittings | 1 fitting        | 2 fittings |
| 250                 | 7.5              | 15.0       | 10.0             | 15.0       |
| 300                 | 6.5              | 12.5       | 8.0              | 15.0       |
| 350                 | 5.5              | 11.0       | 7.0              | 14.0       |
| 400                 | 4.5              | 9.5        | 6.0              | 12.5       |
| 450                 | 4.0              | 8.5        | 5.5              | 11.0       |
| 500                 | 4.0              | 7.5        | 5.0              | 10.0       |
| 550                 | 3.5              | 7.0        | 4.0              | 9.0        |
| 600                 | 3.0              | 6.0        | 4.0              | 8.0        |
| 650                 | 3.0              | 5.5        | 4.0              | 7.5        |
| 700                 | 3.0              | 5.0        | 3.5              | 7.0        |

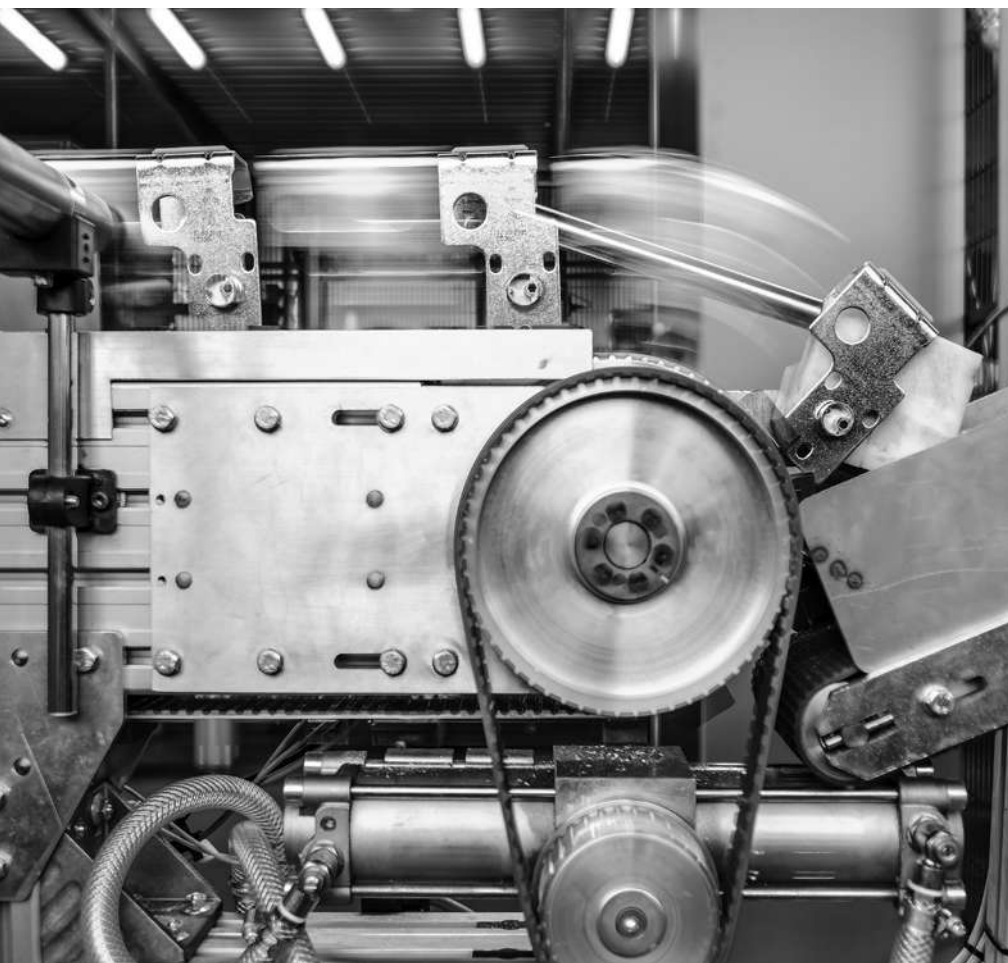


### Recommended products:

- > Concealed hinges ..... 47
- > Complete set ..... 54

# FREE FAMILY FLAP FITTINGS

PREMIUM PRODUCTION TO OUTSTANDING SERVICE.



**Established as the leading brand amongst those in the trade, Häfele have been helping people make the most of their homes for over 90 years. Now a worldwide respected name in 150 countries, the humble beginnings of Häfele starts in the South of Germany. A family run business then and now, Häfele was built on solid foundations including the highest quality products, a commitment to improving the way furniture works and looks, and most importantly, a passion for outstanding service.**

The Free Family flap fittings are our latest product innovation from Häfele. Designed and manufactured by Häfele at our Flap Competence Centre, we are incredibly proud of this new system that combines our reputation for product innovation with premium production and finishing.

Outstanding customer service comes as standard with our free technical advice from Häfele's specially qualified support team. It is quick and easy to order too either by phone, email, or online at [www.hafele.co.nz](http://www.hafele.co.nz)



3 WAYS TO BUY:



[www.hafele.co.nz](http://www.hafele.co.nz)



0800 4 hafele



[info@hafele.co.nz](mailto:info@hafele.co.nz)



# EXPERIENCE TURNS TO EXPERTISE

QUALITY WITHOUT COMPROMISE: ENGINEERED BY HÄFELE.



“The Complete Häfele” is a well-known term in the industry: It represents over 90 years of comprehensive experience with furniture fittings. Today, Häfele stands for even more. The expanded engineering expertise and the constant drive to think ahead lead to innovative solutions for the market of today and tomorrow.

The Free family of products is the next significant step in the development of Häfele’s expertise. The expectation to set a new standard for flap fittings in the market, and to have those fittings meet Häfele’s typical level of quality could only be achieved by developing and manufacturing the product in-house, by creating Häfele’s own solutions for flap fittings.

A new manufacturing hall, the latest machinery and the most modern standards are the cornerstones for reliable production. Experienced development engineers in the factory ensure continuously high quality. The goal is to connect the opening and closing of cabinets with a feeling of luxury and reliability. Engineered by Häfele.







732.98.682 FREE FAMILY FITTINGS - 04.2022

**Häfele New Zealand Ltd.** | Auckland Head Office, 16 Accent Drive, East Tamaki, Auckland 2013 | Wellington Design Centre, The Wool Store, Level 1, 262 Thorndon Quay | Christchurch Design Centre, 5 Wigram Close, Sockburn  
**Phone:** 0800 442 335 | **Email:** [info@hafele.co.nz](mailto:info@hafele.co.nz) | [www.hafele.co.nz](http://www.hafele.co.nz)

**HÄFELE LOCATIONS:**

**Australia** | MELBOURNE | SYDNEY | NEWCASTLE | BRISBANE | ADELAIDE | LAUNCESTON | HOBART | PERTH  
**New Zealand** | AUCKLAND | WELLINGTON | CHRISTCHURCH