



HÄFELE


Hideaway®

*Hidden bin systems for
efficiency, sustainability
and lifestyle.*

*Sort, store and recycle with
a Hideaway Bin.*

INCLUDING THE MULTI-AWARD
WINNING PRODUCT RANGE

Concelo®

BY HIDEAWAY

2022



hideawaybins.co.nz





Manage, sort and store your waste, recycling and laundry with a Hideaway waste/recycling bin solution or laundry hamper.

A leading-edge, practical hidden bin system that fits effortlessly into your environment to assist with everything from hygienically disposing of waste and sorting your recycling to separating and storing your laundry.

Three intelligently designed, New Zealand made ranges are available: Concelo®, Soft Close, and Compact, offering a simple and stylish space-saving solution.

With each of the three ranges offering distinctive features, there is sure to be a Hideaway Bin to suit the requirements of any residential or commercial project.

Our Waste Management Guide on pages 3/4 will help you decide which Hideaway Bin is right for you.



Our Hideaway Bin systems are designed and produced to help our customers to achieve more sustainable waste practices within their own homes and workplaces.

As a manufacturing business and as individual New Zealanders, we recognise and value the unique and precious environment we live and work within. We strive to protect this environment through responsible business practices and sustainable waste and recycling habits.

The topic of managing waste and recycling has never been stronger, and the team at Hideaway Bins take great pride in responsibly recycling and re-using products within our business and manufacturing processes.

To ensure this, we have put a number of practices in place so that our environmental impact is reduced and our products are environmentally friendly.

This includes:

- Ensuring that we re-use cardboard and plastic packaging.
- We recycle waste cardboard, plastic packaging and any metal rejects.
- Our plastic buckets are made from 100% virgin material – making them completely recyclable.
- The waste from the moulding process is ground for re-use by others.

WASTE MANAGEMENT GUIDE

WHICH BIN DO YOU NEED?



Start here to choose your bin solution

Did you know that your bin is the most used appliance in your home?

With that in mind, it's important to choose a bin system that's simple to use, durable, easy to clean and one that makes your everyday waste and recycling routine effortless.

A Hideaway Bin solution will help you create sustainable waste and recycling practices in your household with as little impact to your lifestyle as possible.

As a nation, we are not great recyclers, and the majority of waste still goes to landfill. This not only wastes money, it is environmentally unsustainable.

A key to improving recycling and reducing waste is having a good waste management system.

Move through the 4 steps on the opposite page to give you a guide as to which Hideaway Bin solution would be suitable for your kitchen and your family.

For more information visit:
hideawaybins.co.nz



Calculate the volume of waste your family produces each week

Based on 60 litres of waste per person, per week, categorised into: landfill, recycling and compost.

USE THE TABLE BELOW FOR STEP 2 OPPOSITE.

		1 Person	2 People	3 People	4 People
LANDFILL	43%	26L	52L	104L	156L
RECYCLING	50%	30L	60L	120L	180L
COMPOST	7%	4L	8L	16L	24L
X EMPTIED	100% of waste	4x (60L)	8x (120L)	16x (240L)	24x (360L)

EXAMPLE: with a twin 15L bin system, how often would you need to empty your bin each week? A larger bucket = fewer empties.



1 - How many buckets?

The number of buckets required depends on how many waste streams the waste needs to be separated into, and where those waste streams go.

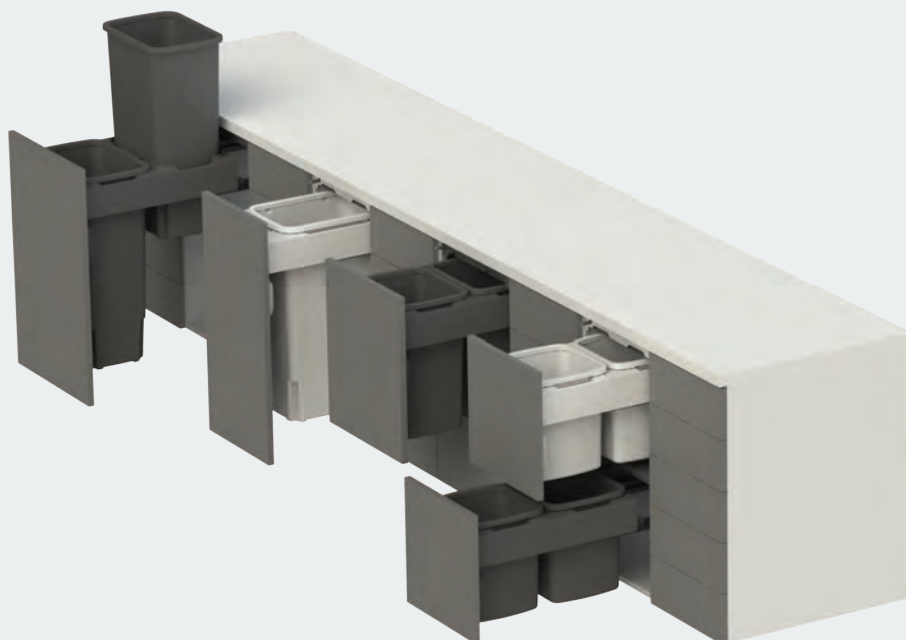
Check with your local council: what is collected by local councils now, and what is planned for the future? Some councils use a comingled recycling system, while others separate recycling. Many councils are introducing organic (food scrap) collections in the future.

Consider your lifestyle – do you want to home compost food scraps? Would you like to separate soft plastics for recycling?

2 - What size bucket?

To calculate the volume of waste generated, consider the number of people in your home (see opposite).

Consider how often you want to empty your bin, and how much space you have.



3 - Bucket placement

Consider where waste is generated in your home, and where space is available to collect waste.

- **60-70% of all household waste is generated in the kitchen**, making it critical to consider the optimal waste management system for this area.
- Will all kitchen waste buckets be combined in one bin unit or be separated into two bin units? Using two bin units allows greater design flexibility.
- Consider ergonomics: keep in mind the bin is used 30+ times per day. Installing at bench height is recommended.
- Waste is also generated in the bathroom, and this typically includes items that can be recycled.

4 - Functional bin system

An important part of the waste management equation is a durable, flexible and easy to clean bin system for your home.

The most common complaint about bin systems is they are dirty and smelly. Hideaway Bins are easy to clean, simplifying the removal of food and dirt traps, which can cause maintenance issues later if left unchecked. Hideaway Bins also have an innovative hands-free lid system to control odours.



INNOVATIVE FEATURES

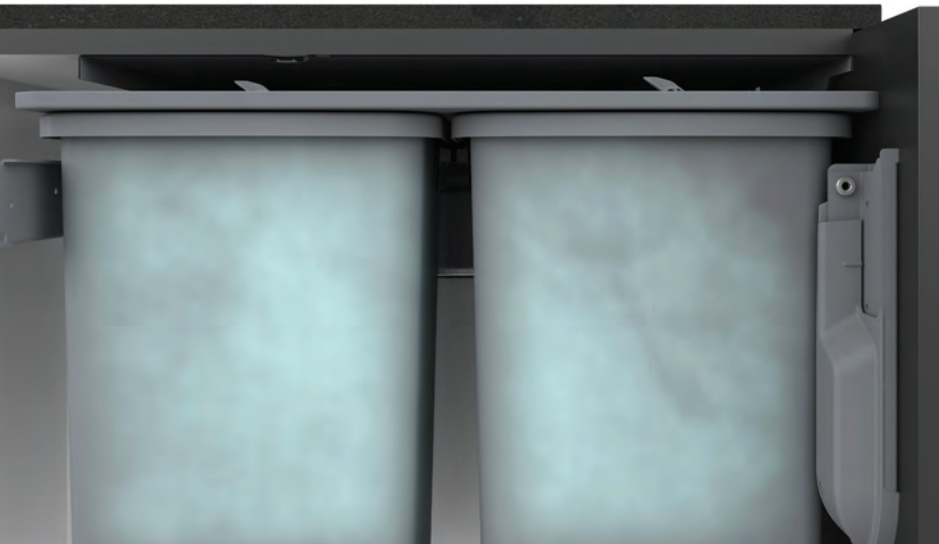
THAT SEPARATE
HIDEAWAY BINS
FROM THE REST





BENCH HEIGHT INSTALLATION

Most Hideaway Bins have the option of being mounted to the top of kitchen cabinets directly under the benchtop. This means the bins are at the optimal height for clearing waste directly off a benchtop. This reduces the amount of bending required when disposing of waste - remember, your waste bin is one of the appliances you use most in the kitchen.



BUILT-IN LID

Hideaway is the pioneer of waste bins with a built-in self closing lid. When you have a hand full of rubbish, you don't want to be juggling between opening a door and lifting a lid while trying not to spill rubbish.

The Hideaway lid is mounted to the top of the bin system inside the cabinet, and closes itself onto the buckets when the bin is closed, to control odours while still keeping your hands free.



EASY ACCESS TO REAR BUCKET

All Hideaway Bins are designed with over extension runners. This makes it easy to remove or empty the bin, without having to compromise on space and ergonomics. The rear bucket can be removed independently of the front bucket from beneath the bench top.



FLEXIBLE MOUNTING OPTIONS

Hideaway Bins are designed with a range of mounting options to suit the environment they are installed within. Top mounting for easy access, side mounting for additional support and floor mounting for flexibility in compact spaces.

Concelo®

REDEFINES

WHAT YOU SHOULD EXPECT FROM
YOUR MOST USED APPLIANCE

Concelo®, Hideaway's premium bin range and the new standard in waste bins and laundry hampers.

The Concelo® range is the result of seven years of research, development and testing. It builds on Hideaway's strong heritage of quality and innovation to create the next generation of premium hidden storage solutions.

The Concelo range has been designed to deliver a waste bin and laundry hamper without compromise. Every element of the range has been engineered and tested to ensure it delivers both the form and function that should be expected from a premium home appliance.

Concelo boasts not just a clean design aesthetic, but its Clip 'n' Clean features help keep your bin looking and smelling clean.

Managing waste can be a challenge, but Concelo is the easiest bin in the world to keep clean, while its new Active Lid helps control odours.

It not only takes all the best features you would expect from Hideaway and improves them, but it totally redefines what you should expect from your bin solution, wherever you need it.

MULTI-AWARD
WINNING PRODUCT



**reddot award 2019
winner**

"A sophisticated product solution, this kitchen waste bin convinces thanks to its automatic, odour controlling closing mechanism."

- Judge's comment, Germany 2019



**AWISA 2018
GOLD STAR WINNER**
FOR INNOVATIVE TECHNOLOGY

"Concelo is clever, smart, well designed and is superior to every other waste system on the market."

- Judge's comment, Australia 2018





THE PERFECT WASTE SOLUTION FOR THE

HOME OWNER

Clip'n'Clean components create a painless cleaning process with effortless removal, washing and reinstallation within moments.

Made from stain resistant polypropylene, components are easily cleaned with soapy water. Simply clip them back into position in seconds. Concelo's Clip'n'Clean trays are not only easy to clean, they avoid any potential food traps in difficult to reach spaces.



ACTIVE LID SYSTEM

Managing waste can be a challenge, especially the smell. Concelo overcomes this with its Active Lid designed to help control odours.

The Active Lid is hidden from sight at the top of the bin inside the cabinet, and drops down to close over the buckets when the unit is closed.

The motion of the lid is synchronized with the opening and closing action of the unit, which lets you keep your hands free to simply drop waste into the bin.

The Active Lid has been designed so that it can very easily be removed and re-installed with the help of a cleverly designed lid tool!

Learn more about
Concelo



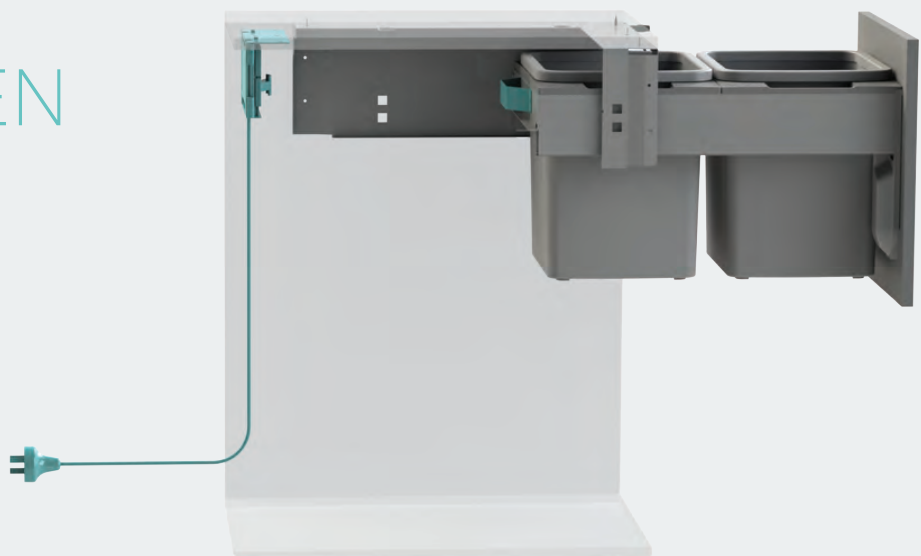
ACTIVE LID
IN PLACE



COMPATIBLE WITH ELECTRONIC PUSH TO OPEN TRUE HANDS-FREE

Combined with the Active Lid, this provides the ultimate hands free bin which is so important when you have a handful of waste to dispose of. Your drawer front stays clean, and you can simply dispose of waste in one step.

See page 12 for technical details.



Concelo®

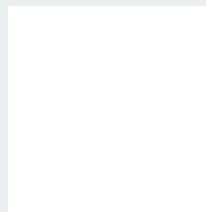
A PREMIUM OPTION FOR THE

DESIGNER

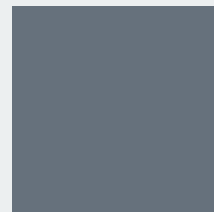
A bin range with design front of mind.
Sophisticated features, modern colour
options and clean, concealed componentry.

Concelo in Arctic White makes it possible to have a premium bin system that matches ever popular white drawer systems. With easy clean components, it's possible to keep it looking crisp and white.

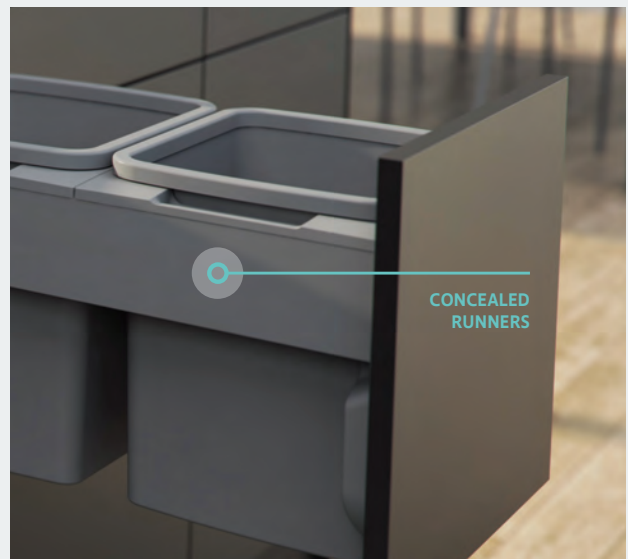
The new Cinder colour matches the trend for dark grey kitchen components and cabinetry.



Concelo Arctic White



Concelo Cinder



See additional features on pages 9/10 that the homeowner will love when you specify Concelo.

Scan this code to view testimonials from kitchen designers who have used Concelo in their projects.



Concelo testimonials from Toni Roberts, director of Kitchen Architecture and Celia Visser, director of Celia Visser Design.

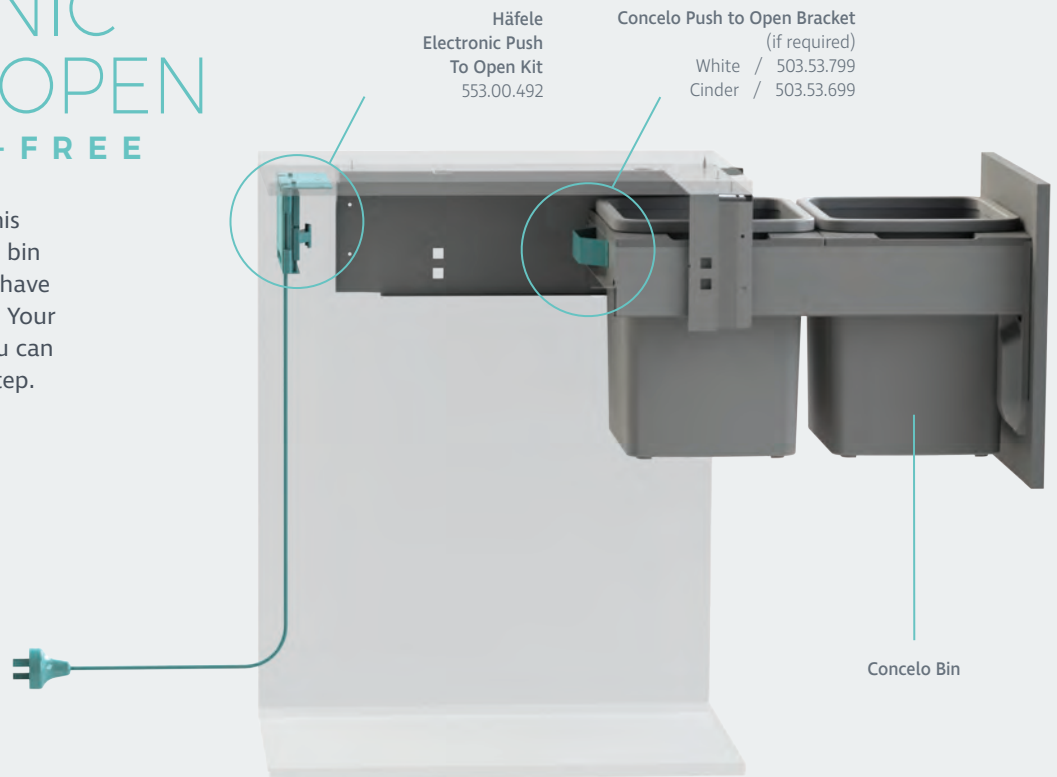
COMPATIBLE WITH ELECTRONIC PUSH TO OPEN TRUE HANDS-FREE

Combined with the Active Lid, this provides the ultimate hands free bin which is so important when you have a handful of waste to dispose of. Your drawer front stays clean, and you can simply dispose of waste in one step.

Warranty: Concelo is warranted for use with Häfele Grass Sensomatic or Blum Servo Drive systems.

Refer to the technical guides on the Hideaway website for installation of electronic systems.

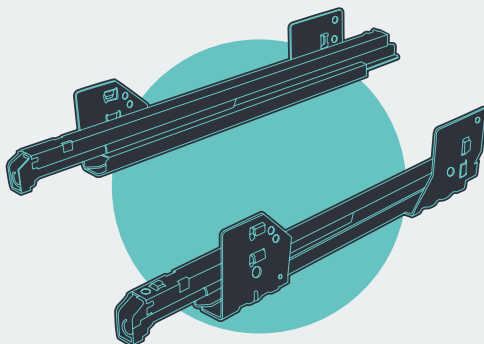
Note: Push To Open Accessories do not come with Concelo and must be ordered separately. See website for detail on parts required and installation.



GERMAN SYNCHRONISED OVER EXTENSION RUNNER

Häfele Matrix Runners - smooth synchronised runners with fluid damper for seamless quiet closing action – 45kg dynamic weight rating. Beautiful, sophisticated runners, equal to other premium drawers.

The over extension runner allows for easy access to the back bucket with bench height installation.



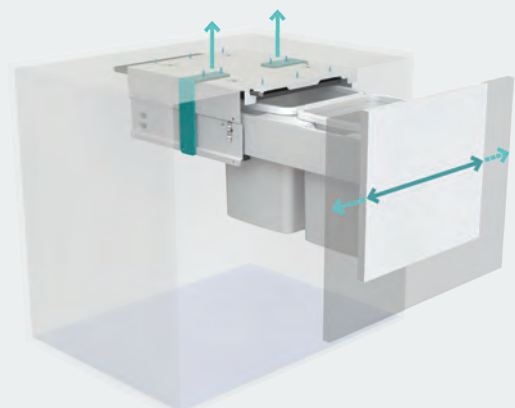
For guidance on maximum door sizes please refer to the Hideaway Bins website.

DESIGN FLEXIBILITY

One of Hideaway Bins unique points of difference has always been the ability to mount our bin systems to the top plate of a cabinet. This allows Hideaway Bins to be installed in cabinets in a variety of situations.

The updated Concelo can be mounted to the top plate of the cabinets using the NEW CRTMB Brackets. The brackets are supplied as an optional kit. They slot into the body and are bolted securely in place.

The new bracket design allows Concelo to be fitted in over width cabinets, providing strength and rigidity without the need for custom side packers. This is particularly useful for retrofit situations.



Concelo®

AN EASY INSTALLATION FOR THE

TRADE

The trade spoke and Hideaway listened.
Concelo® waste bins are designed for
ease of installation.



kitchen



commercial



recycle station



10 YEAR
WARRANTY

View how simple
Concelo is to install



SCAN ME

Concelo testimonial from
Richard Cripps, director of
Kitchens by Design



SCAN ME

CONCELO WASTE BIN FEATURES

COLOUR OPTIONS
Available in Arctic
White or Cinder.

ACTIVE LID

**LINER
HOLDER**

**POLYPROPYLENE
BUCKETS**

CLIP 'N' CLEAN TRAY
Unique to Hideaway.
Eliminates the risk of
rust.

**ELECTRONIC
PUSH TO OPEN
COMPATIBLE**

**TOP PLATE
MOUNTING
BRACKET**
for over width
cabinets.

SIDE MOUNTING
suits standard size
cabinets, System
32 drilling.

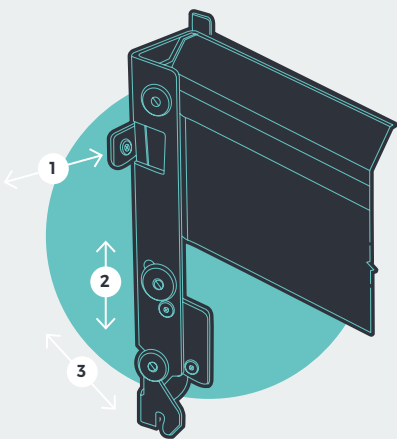
**HÄFELE MATRIX
RUNNER**
Concealed, over
extension, smooth,
synchronised runners
- equal to other
premium drawers.

**TRUE 6-WAY
CAM DOOR
ADJUSTMENT**
and locking bolt
system to lock door
in position.

DOOR BRACKET ADJUSTMENT

2-piece door bracket design provides simple yet precise 6-way door adjustment with **LOCKING BOLT SYSTEM** to lock door position in place.

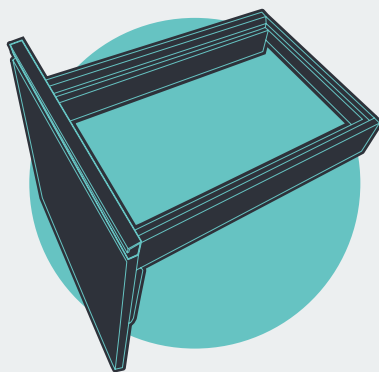
1. Horizontal adjustment +/- 2.5mm
2. Vertical adjustment +/- 2.5mm
3. Tilt adjustment +/- 0.75 degrees



TOOL-LESS COLLAR REMOVAL

Tool-less collar assembly and removal make installation quick and easy, in a manner similar to other drawers.

↑
SHORT, SHARP 'BUMP OFF',
TYPICAL OF OTHER DRAWERS, TO
REMOVE COLLAR FROM RUNNERS



TECH SPECS FOR ALL MODELS

Mount Options

Side mount in standard cabinet widths, suits system 32 drilling. Mount to top plate of over width cabinets using CRTMB brackets.

Pull Type

Door.

Premium Soft Close Runners

Häfele Matrix runner. German made, 45kg soft close synchronized over extension runner with fluid damper, equal to premium drawers.

Materials:

Frame – 1.0mm zinc treated steel, powder coated.

Drawer sides – aluminium, powder coated. Concealed runners.

Active Lid / Clip'n'Clean Trays / buckets / liner holders – recyclable food grade, polypropylene.

Electronic Push To Open

Compatible with electronic push to open systems. Refer to page 12 for more information and technical specifications.

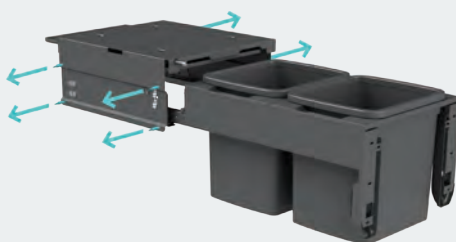
Bench Overhang Clearance

See page 18 and 19 for technical information.

FLEXIBLE MOUNTING OPTIONS

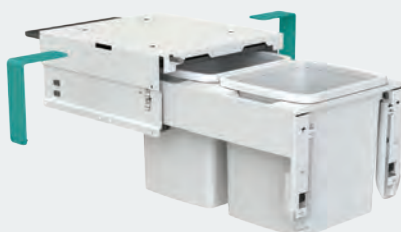
System 32 Side Mounting

Concelo has been designed with simplicity in mind. The entire range uses one System 32 drilling pattern to mount to the sides of the cabinet using high strength Euro screws. All models fit straight into standard cabinet widths with 16mm sides.

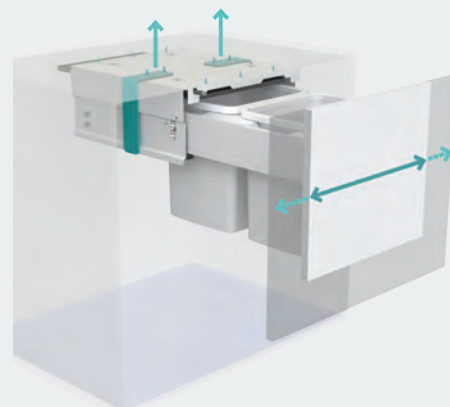


Top Mounting for over width cabinets

Concelo has been engineered to give design flexibility when needed. Concelo can be installed in over width cabinets by mounting to the top of the cabinet using the **NEW CRTMB Top Mount Brackets**. This gives designers the freedom to place the bin in the ideal position without compromising strength or rigidity, and no need for packers. See concelo.com for specs on maximum door sizes. This is particularly useful for retrofit situations.



For guidance on maximum door sizes please refer to the Hideaway Bins website.



Concelo.®

BY HIDEAWAY

THE RANGE



KITCHEN BATHROOM LAUNDRY



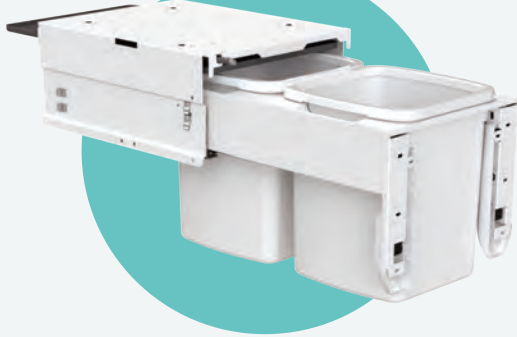
CRL450-235D-W-2W
503.55.795

CONCELO® WASTE & RECYCLING

2 x 13 LITRE *BUCKETS*

CR350-213D-W / 503.64.732

ARCTIC WHITE



CR350-213D-C / 503.64.632

CINDER



DIMENSIONS

Suitable for Minimum* Cabinet Width: 350mm

Minimum Internal Cabinet Dimensions: (WxHxD)mm 318 x 335 x 525

Designed to fit behind 50/50 drawer fronts. 2 x units can be installed within a 720mm standard carcass height providing a 4 bin recycling solution.

2 x 15 LITRE *BUCKETS*

CR400-215D-W / 503.64.703

ARCTIC WHITE



CR400-215D-C / 503.64.603

CINDER



DIMENSIONS

Suitable for Minimum* Cabinet Width: 400mm

Minimum Internal Cabinet Dimensions: (WxHxD)mm 368 x 335 x 525

2 x units can be installed within a 720mm standard carcass height providing a 4 bin recycling solution.

2 x 16 LITRE *BUCKETS*

CR350-216D-W / 503.54.782

ARCTIC WHITE



CR350-216D-C / 503.54.682

CINDER



DIMENSIONS

Suitable for Minimum* Cabinet Width: 350mm

Minimum Internal Cabinet Dimensions: (WxHxD)mm 318 x 415 x 525

Allows for the option of either a 2/3 to 1/3 or 60/40 split in drawers to match design preference.

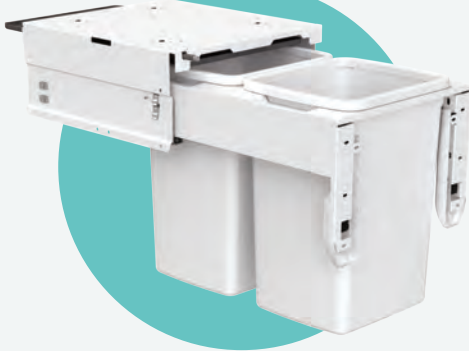
BENCH OVERHANG CLEARANCE Concelo Bins have been designed with over extension drawer runners which allow for a bench overhang of up to 40mm and 110mm on CR350-135D, allowing the back bucket to come clear independent of the front bucket. If more bench overhang clearance is required, please mount the bin lower in the cabinet. **See page 32 for details about our Concelo accessories.**

*Allows for 16mm shelf. Assumes 16mm carcass.

2 x 20 LITRE *BUCKETS*

CR400-220D-W / 503.64.713

ARCTIC WHITE



CR400-220D-C / 503.64.613

CINDER



DIMENSIONS

Suitable for Minimum* Cabinet Width: 400mm

Minimum Internal Cabinet Dimensions: (WxHxD)mm 368 x 440 x 525

2 x 35 LITRE *BUCKETS*

CR450-235D-W / 503.64.724

ARCTIC WHITE



CR450-235D-C / 503.64.624

CINDER



DIMENSIONS

Suitable for Minimum* Cabinet Width: 450mm

Minimum Internal Cabinet Dimensions: (WxHxD)mm 418 x 640 x 525

Bucket features unique air vent system that allows trapped air to escape through vents as your bin liner is pushed into the bucket cavity.

1 x 35 LITRE *BUCKET*

CR350-135D-W / 503.54.792

ARCTIC WHITE



CR350-135D-C / 503.54.692

CINDER



DIMENSIONS

Suitable for Minimum* Cabinet Width: 350mm

Minimum Internal Cabinet Dimensions: (WxHxD)mm 318 x 640 x 525

Bucket features unique air vent system that allows trapped air to escape through vents as your bin liner is pushed into the bucket cavity.

CONCELO[®] LAUNDRY HAMPERS

1 x 35 LITRE *HAMPER*

CRL350-135D-W / 503.55.764

ARCTIC WHITE



DIMENSIONS

Suitable for Minimum*

Cabinet Width: 350mm

Minimum Internal Cabinet Dimensions:

(WxHxD)mm 318 x 605** x 525

**Recommended internal height 670mm

View how to install
Concelo Laundry



SCAN ME

2 x 35 LITRE *HAMPERS*

CRL450-235D-W-1W1C / 503.64.744

ARCTIC WHITE



(1 WHITE HAMPER,
1 CINDER HAMPER)

CRL450-235D-W-2W / 503.55.795

ARCTIC WHITE



DIMENSIONS

Suitable for Minimum* Cabinet Width: 450mm

Minimum Internal Cabinet Dimensions: (WxHxD)mm 418 x 605** x 525 **Recommended internal height 670mm

1 x 60 LITRE *HAMPERS*

CRL450-160D-W / 503.55.785

ARCTIC WHITE



CRL450-160D-C / 503.55.685

CINDER



DIMENSIONS

Suitable for Minimum* Cabinet Width: 450mm

Minimum Internal Cabinet Dimensions: (WxHxD)mm 418 x 590** x 525 **Recommended internal height 630mm

BENCH OVERHANG CLEARANCE Concelo Laundry Hampers have been designed with over extension drawer runners which allow for a certain bench overhang. CRL450-160D models allow up to 50mm clearance, CRL450-235D models allow up to 40mm clearance and 110mm on CRL350-135D. If more bench overhang clearance is required, please mount the unit lower in the cabinet. **See page 32 for information about our Concelo Laundry accessories.**



Concelo® Laundry Hampers offer a sophisticated storage solution. Based on the same platform as the Red Dot award-winning Concelo® Waste Bin, the Concelo® Laundry system continues to raise the bar in what should be expected from a laundry hamper.

Hide your laundry, store your extra linen or use as a removable washing basket. Concelo Laundry Hampers can also be integrated into wardrobe or bathroom cabinetry to discreetly hide laundry.

Concelo Laundry Hampers are available in three sizes. Two 60L hampers can be installed side by side in your laundry to separate washing or choose the 1 x 35L or 2 x 35L hampers when space is at a premium. The large 60L hamper is big enough to cope with a family load of washing and the 35L hampers maximise space while still offering excellent storage capacity.

The light-weight hampers are easy to remove and feature air vents to reduce moisture and a solid base to prevent drips.

This innovative design is packed with features to suit the needs of the designer, the cabinet maker and the homeowner.

Ergonomic and functional, Concelo hampers are designed to withstand the weight of wet washing and look good doing it - a must for your laundry!

LAUNDRY CHUTE

The Concelo 1 x 60L Laundry Hamper is ideal for use under a laundry chute.

HAMPER OPENING:
(WxD)mm 320 x 400



HAMPER FEATURES

- 1 **Moulded Hamper** Available in either 1 x 35L, 2 x 35L or 1 x 60L.
- 2 **Clip 'n' Clean Tray** Unique to Hideaway. Eliminates risk of rust.
- 3 **Door Adjustment** True 6-way cam door adjustment. With locking bolt system to lock door position in place. (+/- 2.5mm vertical and horizontal adjustment +/- 0.75 degree pitch adjustment)
- 4 **Premium Soft Close Runner** Häfele Matrix runner. Concealed, over extension, smooth, synchronised runners - equal to other premium drawers. 45kg weight rating.
- 5 **Side Mounting** To suit standard System 32 drilling positions.
- 6 **Electronic Push To Open** Compatible with electronic push to open systems. Refer to page 12 for more information and technical specifications.





INNOVATIVE

**INTELLIGENTLY DESIGNED, NEW ZEALAND
MADE RANGES THAT HAVE CRAFTED THE
HIDEAWAY REPUTATION**

Hideaway's core bin ranges offer a simple and stylish
space-saving solution.

HIDEAWAY® SOFT CLOSE

HIDEAWAY® COMPACT

HIDEAWAY® COMPACT FLOOR MOUNT





SC220D-W / 503.53.732

HIDEAWAY® SOFT CLOSE RANGE

SOFT CLOSE FEATURES

BUILT-IN LID

Removable, foam-sprung friction-fitted lid that covers over the bucket/s when the unit is closed, assisting in odour control.

CLINIKILL™

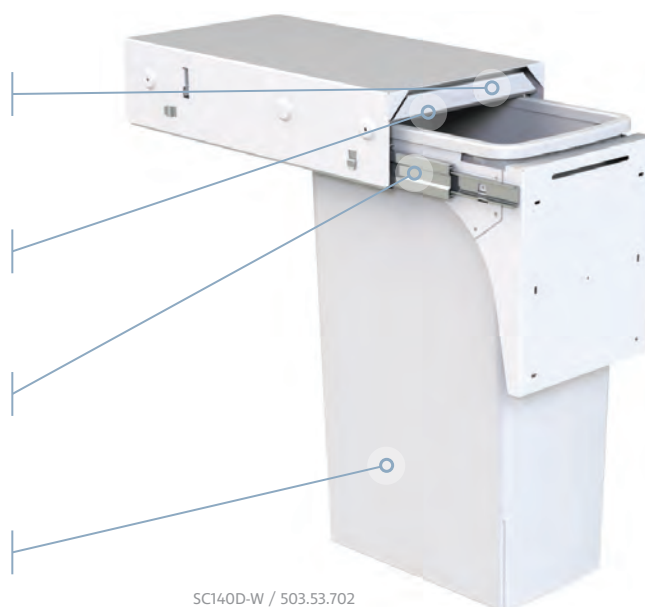
The lid has a Clinikill™ antibacterial powder coat to fight harmful bacteria, yeast and fungi keeping the bin solution hygienic.

SOFT CLOSE RUNNERS

High quality German ball bearing soft close runners.

BUCKETS

Made from a recyclable, food-grade polypropylene plastic. Buckets come complete with a liner holder to hold your bin liner in place.



SC140D-W / 503.53.702



kitchen



commercial



recycling station

RANGE SPECIFICATIONS

METAL FRAME

1.2mm zinc treated steel, powder coated for durability.

AIR VENTS

Unique air vent system to maximise bin liner volume. 40L models only. See page 31 for more details.

MOUNTING OPTIONS

Top mount and/or side mount options to give greater design flexibility to install the bin in the optimal position.

ADJUSTMENT

Vertical, horizontal and pitch adjustment provided in door bracket. Forward/back adjustment is provided on the centre fixings of the top mount panel.

RUNNER RATING

Soft close over extension ball bearing runner. 52kg dynamic weight loading.

INSTALLATION INSTRUCTIONS

All measurements given are internal (wall to wall) and are the minimum required to fit each unit.

INSTALLATION OPTIONS

DOOR PULL - One Step Action. The front fascia of the cabinet is attached to the door bracket of the Hideaway Bin. The bin is accessible by simply pulling open the cabinet door.

BENCH OVERHANG CLEARANCE

Hideaway Soft Close Bins have been designed with over extension drawer runners which allow for a bench overhang of up to 40mm, allowing the back bucket to come clear independent of the front bucket. If more bench overhang clearance is required, please mount the bin lower in the cabinet.

PRODUCT CODES

Hideaway Bin codes appear in blue (eg SC220D-W / 503.53.732). Use these codes when placing an order for your Hideaway Bin.



SCLBM160D-W / 503.53.764



2 x 15 litre buckets (WxHxD)mm 317 x 340 x 520

Available in:
SC215D-W / 503.53.722
Door Pull, Arctic White

2 x units can be installed within the standard carcass height providing a four bin recycling solution.

NOTE: Standard carcass height is 720mm internal and allows for a 16mm shelf.



2 x 20 litre buckets (WxHxD)mm 317 x 450 x 520

Available in:
SC220D-W / 503.53.732
Door Pull, Arctic White

Ideal recycling solution for the average family.



1 x 40 litre bucket (WxHxD)mm 285 x 655 x 520

Available in:
SC140D-W / 503.53.702
Door Pull, Arctic White

Large bucket capacity for those looking for a single bin waste or recycling solution for areas of limited width. Bucket features unique air vent system.



1 x 50 litre bucket (WxHxD)mm 367 x 625 x 520

Available in:
SC150D-W / 503.53.713
Door Pull, Arctic White

Larger family or commercial or office kitchen.

NOTE: Bucket is nominal 50L size, actual capacity is 46L.



1 x 60 litre hamper (WxHxD)mm 417 x 635 x 520 Base Mount

Available in:
SCLBM160D-W / 503.53.764
Door Pull, Arctic White

Ideal for under a laundry chute.

AUS Patent No: 2016220571



LAUNDRY CHUTE

Base Mount Laundry unit is ideal for use under a laundry chute.

HAMPER OPENING: (WxD)mm 320 x 400



HIDDEN RECYCLING STATION

COMMERCIAL RECYCLING

Sustainable recycling practices in the workplace begin with making your recycling solution easy to use, durable and hygienic whilst remaining design focused.



commercial



recycling station

Hidden from sight

Recycling bins placed in walkways can look unhygienic and be a real eye-sore. Integrate a hidden recycling station into a commercial environment to ensure a professional workplace with design front of mind.

Durability

The two ranges we recommend are: Concelo by Hideaway and Hideaway Soft Close. They have been designed with quality materials to ensure the units withstand the challenges posed in a commercial environment.

High quality runners are designed to hold up to 45kgs/52kgs and they over extend so the rear bucket can be easily removed from beneath the benchtop.

Hideaway buckets are made from virgin polypropylene which give them the durability to withstand the rigors of continual use in a commercial environment.

Smart Design Features

The control of odours is paramount within a commercial space. Hideaway Bins include a built-in lid that remains in the cupboard when the unit is open, but covers over the buckets when the unit is closed assisting in odour control.

See the Concelo range (page 17/18) and the Soft Close range (page 23/24) for more details.

NOTE: The Hideaway Compact range is designed for residential use and is not recommended for commercial applications. Its use in this application will void the warranty.





NEW CINDER

KC40SCD-C / 503.55.432



KC30SCD-W / 503.55.732

HIDEAWAY® COMPACT RANGE

COMPACT FEATURES

COMPACT

Compact design to maximise space utilisation – the biggest bucket for the smallest space. Door pull models are available in two colours: **Arctic White** and **Cinder**.

SOFT CLOSE RUNNERS

High quality ball bearing soft close runners for smooth, light movement.

INSTALLATION OPTIONS

Door pull (illustrated opposite) or handle pull. Top, side and floor mount options. Floor mount models are a great retro-fit option (refer page 30).

PUSH TO OPEN

Compatible with electronic systems for handleless push to open functionality.



KC30SCD-C / 503.55.422



kitchen



bathroom



laundry



motorhome

RANGE SPECIFICATIONS

METAL FRAME

1.0mm zinc treated steel, powder coated for durability.

DOOR BRACKET ADJUSTMENT

Vertical, horizontal and pitch adjustment provided in door bracket.

RUNNER RATING

Soft close over extension ball bearing runner. 45kg dynamic weight loading for KC235 and KC240 models. 38kg dynamic weight loading for all other models.

BUCKETS

Made from a recyclable, food-grade polypropylene plastic. Buckets come complete with a liner holder to hold your bin liner in place.

AIR VENTS

Unique air vent system to maximise bin liner volume. 35L and 40L models only. See page 31 for more details.

INSTALLATION OPTIONS

DOOR PULL - One Step Action. The front fascia of the cabinet is attached to the door bracket of the Hideaway Bin. The bin is accessible by simply pulling open the cabinet door.

HANDLE PULL - Two Step Action. The bin is accessible by opening the hinged cupboard door and pulling out the bin using its handle.

MOUNTING OPTIONS

Top mount and/or side mount options to give greater design flexibility to install the bin in the optimal position.

BENCH OVERHANG CLEARANCE

Hideaway Compact Bins have been designed with over extension drawer runners which allow for a bench overhang of up to 35mm, allowing the back bucket to come clear independent of the front bucket. If more bench overhang clearance is required, please mount the bin lower in the cabinet.

PRODUCT CODES

Hideaway Bin codes appear in blue (eg [KC30SCD-W / 503.55.722](#)). Use these codes when placing an order for your Hideaway Bin.

NOTE: The Hideaway Compact range is designed for residential use and is not recommended for commercial applications. Its use in this application will void the warranty. NZ Patent No: 530285 AUS Patent No: 2004240179



1 x 15 litre bucket (WxHxD)mm 260 x 310 x 360

Available in:

KC15SCH-W* / 503.54.701

Handle Pull, Arctic White

KC15SCD-W / 503.55.701

Door Pull, Arctic White

KC15SCD-C / 503.55.401

Door Pull, Cinder

Bathroom vanities or motor homes.



2 x 15 litre buckets (WxHxD)mm 300 x 310 x 510

Available in:

KC30SCH-W / 503.54.722

Handle Pull, Arctic White

KC30SCD-W / 503.55.722

Door Pull, Arctic White

KC30SCD-C* / 503.55.422

Door Pull, Cinder

2 x units can be installed within a 720mm standard carcass height providing a four bin recycling solution. Allows for 16mm shelf.



1 x 20 litre bucket (WxHxD)mm 260 x 415 x 360

Available in:

KC20SCH-W* / 503.54.711

Handle Pull, Arctic White

KC20SCD-W / 503.55.711

Door Pull, Arctic White

KC20SCD-C / 503.55.411

Door Pull, Cinder

Ideal for cabinets with limited space.



2 x 20 litre buckets (WxHxD)mm 300 x 415 x 510

Available in:

KC40SCH-W / 503.54.732

Handle Pull, Arctic White

KC40SCD-W* / 503.55.732

Door Pull, Arctic White

KC40SCD-C / 503.55.432

Door Pull, Cinder

Ideal recycling solution for the average family.



2 x 35 litre buckets (WxHxD)mm 368 x 615 x 518

Available in:

KC235SCH-W / 503.51.783

Handle Pull, Arctic White

KC235SCD-W* / 503.52.783

Door Pull, Arctic White

KC235SCD-C / 503.52.483

Door Pull, Cinder

Large 70L capacity, yet fits a 400mm wide cabinet. Bucket features unique air vent system.



1 x 40 litre bucket (WxHxD)mm 268 x 615 x 440

Available in:

KC140SCH-W / 503.54.752

Handle Pull, Arctic White

KC140SCD-W / 503.55.752

Door Pull, Arctic White

KC140SCD-C* / 503.55.452

Door Pull, Cinder

Large bucket capacity for those looking for a single bin waste or recycling solution for areas of limited width. Ideal for 300mm wide cabinet. Bucket features unique air vent system.



2 x 40 litre buckets (WxHxD)mm 418 x 615 x 518

Available in:

KC240SCH-W / 503.51.784

Handle Pull, Arctic White

KC240SCD-W / 503.52.784

Door Pull, Arctic White

KC240SCD-C* / 503.52.484

Door Pull, Cinder

Largest available double bin solution - 80L. Bucket features unique air vent system.



1 x 50 litre bucket (WxHxD)mm 340 x 590 x 440

Available in:

KC50SCH-W* / 503.54.743

Handle Pull, Arctic White

KC50SCD-W / 503.55.743

Door Pull, Arctic White

Ideal for a larger family kitchen.

NOTE: Bucket is nominal 50L size, actual capacity is 46L.

INSTALLATION INSTRUCTIONS -

All measurements given are internal (wall to wall) and are the minimum required to fit each unit.

IMPORTANT NOTE FOR HANDLE PULL

MODELS - Allowance should be made for the width of the bin to clear the door and hinge mechanisms. For top mounted models, installation also requires that the top door hinge be 150mm from the top of the door to allow clearance for the bin handle.

*Pictured Models



SPACE RESTRICTIONS?



kitchen



bathroom



laundry



motorhome

HIDEAWAY FLOOR MOUNT SOLUTIONS

When it's not possible to find space to mount your bin at bench height, Hideaway has a range of bin solutions that can mount to the base or floor of a cabinet and fit around existing plumbing.

Single bucket options are suitable for small spaces, such as bathroom vanities or tight under sink spaces. Double bucket models can be used for waste and recycling where space allows. Installation is simple, making these a great option for DIY projects or retrofitting to existing cabinets.

A fully enclosed, durable, one-piece metal frame means no assembly required. These floor mount bins take just 6 screws into the base of the cabinet and it's installed and ready to use!

COMPACT FLOOR MOUNT MODELS



**1 x 15 litre bucket
Floor Mounted**
(WxHxD)mm 258 x 305 x 358

Available in:

KCF115SCH-W* / 503.50.701

Handle Pull, Arctic White

KCF115SCH-C* / 503.50.401

Handle Pull, Cinder



**1 x 20 litre bucket
Floor Mounted**
(WxHxD)mm 258 x 408 x 358

Available in:

KCF120SCH-W* / 503.50.711

Handle Pull, Arctic White

KCF120SCH-C / 503.50.411

Handle Pull, Cinder



**2 x 15 litre buckets
Floor Mounted**
(WxHxD)mm 298 x 308 x 510

Available in:

KCF215SCH-W* / 503.54.822

Handle Pull, Arctic White

KCF215SCH-C / 503.54.322

Handle Pull, Cinder

KCF215SCD-W / 503.55.822

Door Pull, Arctic White

KCF215SCD-C / 503.55.322

Door Pull, Cinder



**2 x 20 litre buckets
Floor Mounted**
(WxHxD)mm 298 x 408 x 510

Available in:

KCF220SCH-W / 503.54.823

Handle Pull, Arctic White

KCF220SCH-C / 503.54.323

Handle Pull, Cinder

KCF220SCD-W / 503.55.823

Door Pull, Arctic White

KCF220SCD-C* / 503.55.323

Door Pull, Cinder



COMPACT RANGE FEATURES: Refer page 27

FLOOR MOUNT INSTALLATION

INSTRUCTIONS - All measurements given are internal (wall to wall) and are the minimum required to fit each unit.

IMPORTANT NOTE FOR HANDLE PULL

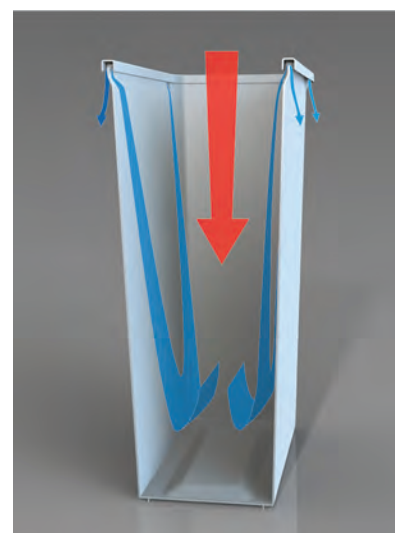
MODELS - Models KCF115SCH, KCF120SCH, KCF215SCH, KCF220SCH - if hinges are used that do not allow the door to clear the opening fully, allow an extra 10mm width (check as this may vary).



CR350-213D-W / 503.64.732

HIDEAWAY 35L & 40L BUCKETS WITH UNIQUE AIR VENT SYSTEM

Four air vents allow trapped air to escape through the lip of the bucket, as the bin liner is filled during use. This unique design will eliminate the frustration of trapped air restricting your liner, maximising bin liner volume.



MATERIALS: DURABLE, FOOD-GRADE AND RECYCLABLE

Hideaway buckets are made with virgin polypropylene, giving them the durability to cope with the tough daily demands of the kitchen environment. The food-grade polypropylene material is FDA (U.S.A) approved, meaning Hideaway buckets can be used for bulk food storage of dry food stuffs. At the end of the life-cycle, the bucket is fully recyclable to minimise environmental impact.

LINER HOLDERS

All buckets used in Hideaway Bins come with matching liner holders, to hold bin liner bags in place. This not only looks tidy, it keeps your bin liner clean for removal and ensures the liner bags don't slip inside the bucket.



Pictured: 15L bucket with liner holder

HIDEAWAY® AND CONCELO® ACCESSORIES

Buckets

Available in:

	White	Cinder
13L	503.64.991	503.64.990
15L	503.52.991	503.52.990
16L	503.64.992	503.64.993
20L	503.52.994	503.52.993
35L	503.52.999	503.52.996
40L	503.52.997	503.52.989
50L	503.52.998	

*NOTE: 50L bucket is nominal
50L size, actual capacity is 46L.

BUCKET DIMENSIONS (WxHxD)mm:

13L - 246 x 290 x 246	35L - 345 x 600 x 245
15L - 279 x 290 x 243	40L - 382 x 592 x 242
16L - 246 x 375 x 246	50L - 315 x 572 x 367
20L - 279 x 395 x 243	

Hampers

Available in:

	White	Cinder
35L	503.53.740	503.53.540
60L	503.53.755	503.53.455

HAMPER DIMENSIONS (WxHxD)mm:

35L - 345 x 600 x 245
60L - 370 x 575 x 465



Liner Holders

Available in:

	White	Cinder
13L & 16L	503.64.970	503.64.971
15L & 20L	503.51.990	503.51.995
35L	503.51.997	503.51.996
40L	503.51.993	503.51.992
50L	503.51.994	

LINER HOLDER DIMENSIONS (WxHxD)mm:

13L & 16L - 250 x 15 x 248
15L & 20L - 283 x 15 x 247
35L - 348 x 15 x 248
40L - 384 x 15 x 244
50L - 320 x 15 x 372



CONCELO® SPECIFIC ACCESSORIES

Clip'N'Clean Trays

Available in:

	White	Cinder
13L & 16L	503.64.780	503.64.680
15L & 20L		
35L	503.64.781	503.64.681
35L-350		
60L		



Refer to the Accessory and Spare parts section on our website to find the correct part for your Concelo bin model.

Active Lids

Available in:

13L, 15L, 16L, 20L and 35L
Cinder

Refer to the Accessory and Spare parts section on our website to find the correct part for your Concelo bin model.



Top Mount Bracket Kit

To mount Concelo bins in an over width cabinet

CRTMB-C / 503.64.989 Cinder



Door Bracket Covers

Suitable for all Concelo Bin models

White or Cinder

Left cover includes Lid Tool slot



Lid Release Tool

Suitable for all Concelo Bin models

CRAT Black



Electronic Push to Open Kit

Available from leading hardware suppliers, for Concelo (and Compact KC30SCD and KC40SCD models)

Concelo is warranted for use with Häfele Grass Sensomatic or Blum Servo Drive systems. See page 12 for more information. Refer to the technical guides on the Hideaway website for installation of electronic systems.

Push to Open Bracket

Available from Hideaway, for Concelo Bin models:

BPTO180-W / 503.53.799	White
BPTO180-C / 503.53.699	Cinder

To work with electronic push to open systems. Not required in some applications. Refer to the technical guides on the Hideaway website for installation of electronic systems.

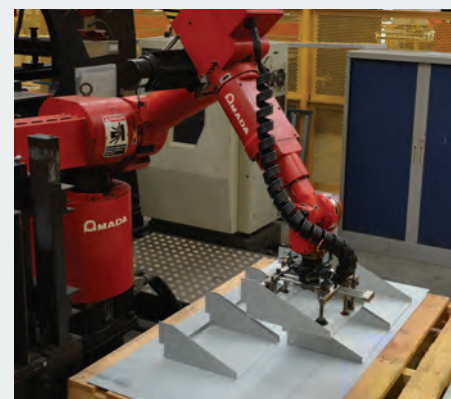


HIDEAWAY BINS ARE PROUDLY DESIGNED AND MADE IN NEW ZEALAND BY KITCHEN KING® LTD AND HAVE A STRONG LOCAL AND INTERNATIONAL REPUTATION FOR THE QUALITY AND INNOVATION OF OUR HIDDEN WASTE, RECYCLING AND LAUNDRY SOLUTIONS.

Kitchen King is a 100% family owned and operated business and has been under the direction of the Bertelsen family since 2006. Our company is run with joint directorship by close father and daughter team, Allen and Jamie Bertelsen.

Our team at Kitchen King not only manufacture and distribute Hideaway Bins but have expanded to include research and design, to ensure we are able to release new and innovative products to the market.

With an industry leading engineering and manufacturing process the team at Kitchen King continue to produce creative solutions for both residential and commercial storage, waste and recycling requirements.



METAL COMPONENTS

Hideaway Bins work closely with New Zealand's leading sheet metal manufacturers and aluminium extruders to produce our metal components.

We use electro-galvanised steel for our sheet metal components. This has a smooth consistent thin layer of zinc to provide corrosion resistance and has a consistent surface for an excellent finish when powder coated.

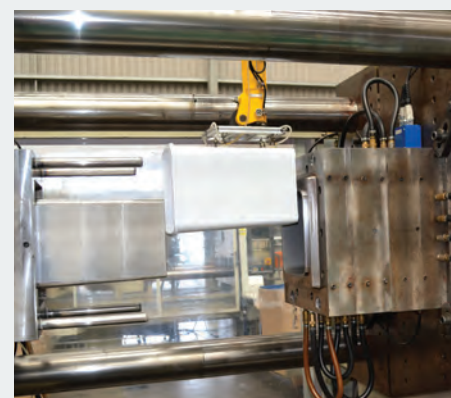
Our sheet metal suppliers utilise cutting edge sheet metal technology, including fibre laser cutters, turret punches, CNC folders and laser welding. This delivers high quality precision components which ensures the quality and reliability of all Hideaway Bins.



UNIQUE POWDER COATING

All metal components are powder coated to provide a tough yet attractive finish. To improve the overall resistance of the coating, all individual metal parts undergo an iron phosphate pre-treatment and are then subjected to an acidic bath.

The powder coat is then electrostatically charged to ensure even coverage, and applied manually using a hand gun to ensure maximum coverage. The powder coating is then cured under heat to allow it to form a hard finish.



PLASTIC COMPONENTS

We partner closely with leading plastic injection moulding suppliers. This gives us access to specialist skills and manufacturing machinery, allowing full control over the plastic injection moulding processes ensuring Hideaway Bins stringent quality standards are met.

All plastic components are made using virgin material for maximum durability. While using virgin material is more expensive, it means the strength of the components are not compromised by using fillers. At the end of their life, all parts are all fully recyclable to ensure minimal environmental impact.

Our buckets are made using a food-grade polypropylene material which is FDA (U.S.A) approved meaning they can also be used to store dry food stuffs.



BIN ASSEMBLY

Once all Hideaway Bin components are ready for assembly, our product technicians assemble the bins at our warehouse in Silverdale, Auckland, NZ. This assembly process allows for all parts to be checked to ensure the highest quality end product.

We won!



Concelo®
BY HIDEAWAY

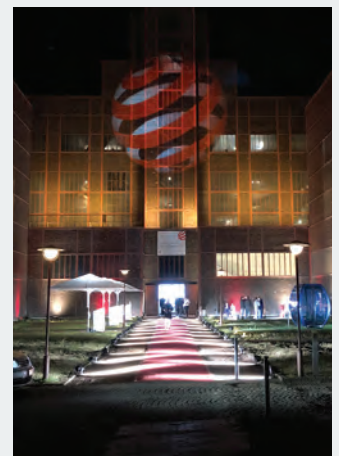
"A sophisticated product solution, this kitchen waste bin convinces thanks to its automatic, odour controlling closing mechanism."
- Judge's comment, Germany 2019

A ONCE IN A LIFETIME RED DOT AWARD! A MILESTONE FOR HIDEAWAY AND FOR NEW ZEALAND PRODUCT DESIGN.

The prestigious international Red Dot Design Awards pay tribute to the best manufacturers and designers of the year. In 2019 there were 5,500 entries from around the world, and only the best products convinced the experts. The manufacturers and designers from the international design scene that created these products were honoured and celebrated on 8 July 2019, at the Red Dot award ceremony in Essen, Germany.

Allen and Jamie enjoyed celebrating this honour in Germany and found themselves mixing among some of the best design companies in the world such as Ferrari, (who won the Design Team of the Year) as well as Apple, Bosch, Grohe, Hyundai, LG, Philips and Sony to name a few.

The Concelo waste bin is now on display in the Red Dot Museum in Essen, alongside other award-winning products. It is also forever featured in the 2019 Red Dot DOING year book where the international design community draw inspiration for future products and stay on top of the latest product trends paving the way forward.





hideawaybins.co.nz

Manufactured by Kitchen King Limited

44 Anvil Road, Silverdale,
Auckland 0932,
New Zealand

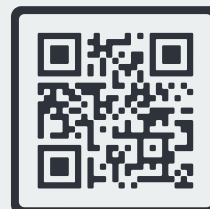
Phone +64 9 426 7456
Fax +64 9 426 7434
info@hideawaybins.co.nz



Scan the QR code to learn
more about Hideaway



Scan the QR code to learn
more about Concelo



PATENT PENDING: concelo.com/ip

HOW TO ORDER

Trade customers can purchase Hideaway Bins from Häfele, and retail customers from our website:
hideawaybins.co.nz

HÄFELE

hafele.co.nz / 0800 4 HAFELE

Häfele (NZ) Head Office

16 Accent Drive, East Tamaki,
Auckland
Ph: (09) 274 2040
Fax: (09) 274 2041
info@hafele.co.nz

Häfele Wellington Design Centre

The Wool Store, Level 1
262 Thorndon Quay, Wellington
Ph: (04) 472 0294
Fax: (04) 472 0295
wellington@hafele.co.nz

Häfele Christchurch Design Centre

12 Sir James Wattie Drive, South Hornby,
Christchurch
Ph: (03) 343 8200
Fax: (03) 343 8201
christchurch@hafele.co.nz